



## Estimate

ADDRESS

KNUDSEN CONSTRUCTION  
ATTN: JOHN BOERSMA JR.  
RE: 500 SKOKIE - 5TH FL

ESTIMATE

11086

DATE

02/01/2024

SALES REP

CHRISTINA 619-635-2888

| ACTIVITY                        | DESCRIPTION  | QTY | AMOUNT   |
|---------------------------------|--|-----|----------|
| MATERIAL-<br>EXPENSE            | ASI GLOBAL POWDER COATED METAL   |     |          |
| STYLE                           | FLOOR MOUNTED/OVERHEAD BRACED  |     |          |
| HARDWARE                        | HARDWARE INCLUDED PER ATTACHED   |     |          |
| COLOR                           | 2125 GREY  |     |          |
| STALLS                          | INCLUDED IN PROPOSAL   | 4   | 3,740.00 |
| SCREENS                         | INCLUDED IN PROPOSAL   | 1   |          |
| ACCESSORIES                     | PER ATTACHED CART - SHIPPED SEPARATELY TO 60409 (NO<br>DELIVERY SERVICES INCLUDED)         | 1   | 3,198.11 |
| CAN SHIP IN                     | APPROX. 3-4 BUSINESS DAYS  |     |          |
| STANDARD<br>FREIGHT<br>INCLUDED | BASED ON (1) SINGLE SHIPMENT TO 60409<br>(NOTIFICATION CALL ADDED FOR PARTITIONS SHIPMENT) |     |          |

\*\*\* QUOTES ARE VALID FOR 30 CALENDAR DAYS.

\*\*\* PRODUCTION LEAD TIMES ARE SUBJECT TO CHANGE WITHOUT  
NOTICE.

\*\*\* SALES TAX WILL BE ADDED IF SHIPPING TO CA, TN, TX, OK, NY,  
FL, GA, MA, NJ, WA, AZ, MI, MN, NC, VA, IL AND MD.

• QUANTITIES & DESCRIPTIONS NOT GUARANTEED TO AGREE WITH PLANS AND/OR  
SPECS. IT IS YOUR RESPONSIBILITY TO REVIEW ENTIRE QUOTE/SUBMITTAL PRIOR TO  
BIDDING YOUR PROJECT. YOU ARE ALSO RESPONSIBLE FOR VERIFYING LOCAL  
MUNICIPALITY / CODE COMPLIANCE.  
ANY CHANGES MADE CAN IMPACT PRICING.

TOTAL

**\$6,938.11**

Accepted By

**Shipping Information (PLEASE MARK ALL THAT APPLY):**

- ☒ Ship ASAP  
☐ Do NOT Ship Before Date \_\_\_\_/\_\_\_\_/\_\_\_\_  
☐ Lift Gate Fee Add. \$125.00

**(REQUIRED IF NO FORKLIFT OR LOADING DOCK)**

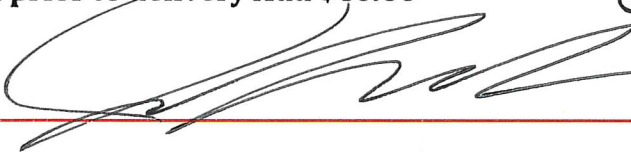
- ☐ Residential / Non-Commercial Delivery Add. \$95.00\*  
☒ Notification call prior to delivery Add \$40.00

Delivery to 1440 Huntington Dr  
Calumet City, IL 60409

Forklift & clock onsite

Delivery hrs 7:00 a.m. to 2:00 p.m.

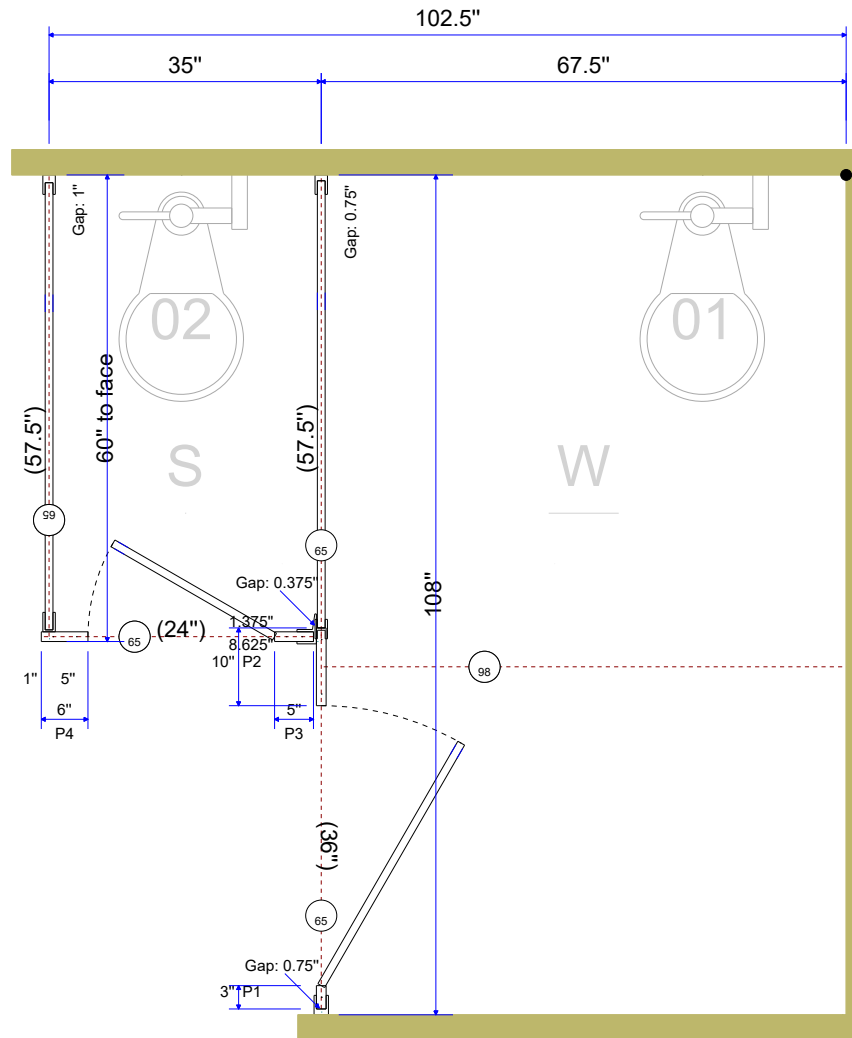
**APPROVED:**

  
1/31/24

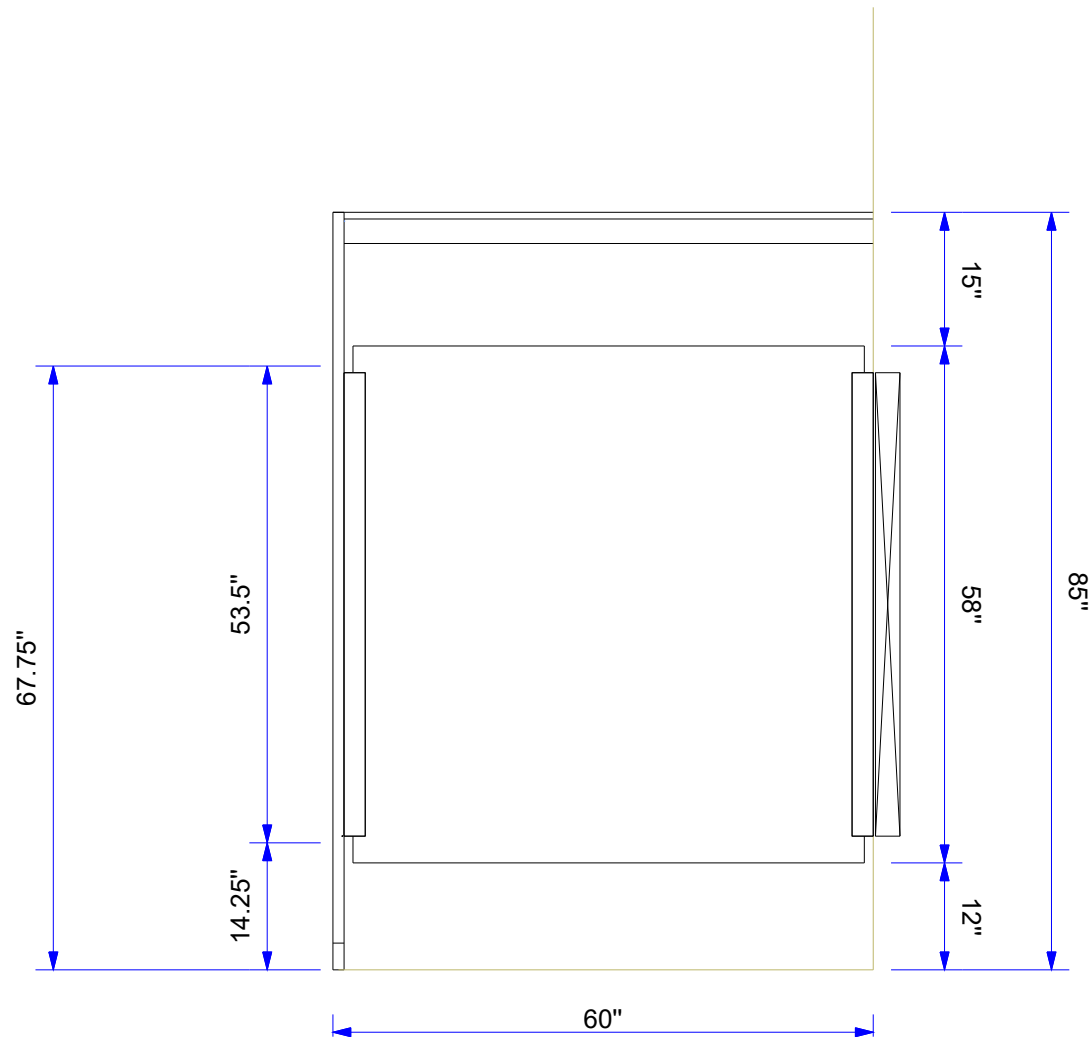
\* The term "residential/non-commercial" also includes apartments, places of worship, schools, pre-schools, day cares, camps, farms, public storage facilities, business operating within a private residence, and other such locations not generally recognized as commercial locations and shall apply to the entire premises.

# LEGEND

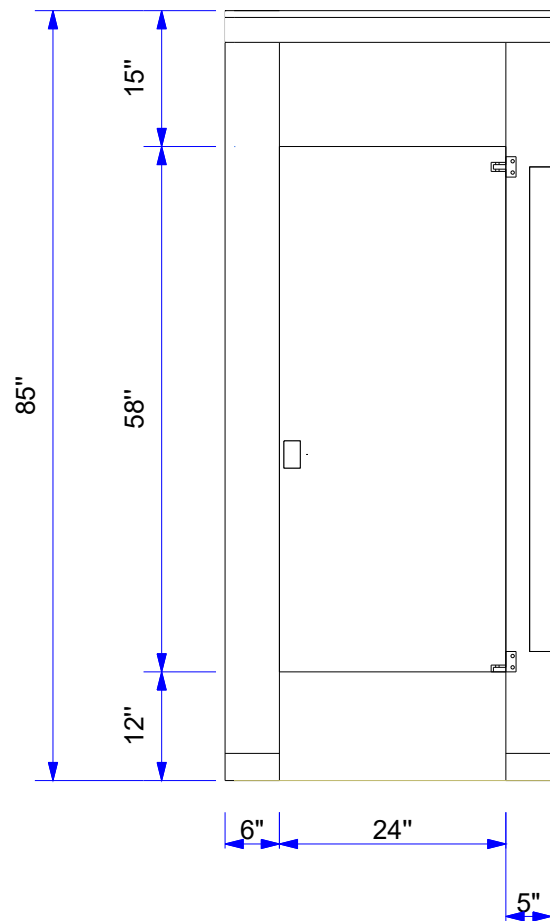
R Grab Bar Reinf.     ## Headrail



|   |  |                              |
|---|--|------------------------------|
| <b>ASI Global Partitions</b><br>Eastanollee, GA 30538 • 708-442-6800 • <a href="http://www.asi-globalpartitions.com">www.asi-globalpartitions.com</a> | Room Name: WOMENS                          | Quantity: 1 (thus)           |
|   | Material: Integrated Privacy Powder Coated | Drawn By: Christina Ziccardi |
| Distributor: Fry Specialty Co, Inc.   | Mounting: Floor Mounted Overhead Braced    | Ceiling Height: 108"         |
| Quote Name: 500 SKOKIE - 5TH FL (SQCN000191-1)  | Color: 2125 Grey                           | Printed: 01/30/2024          |

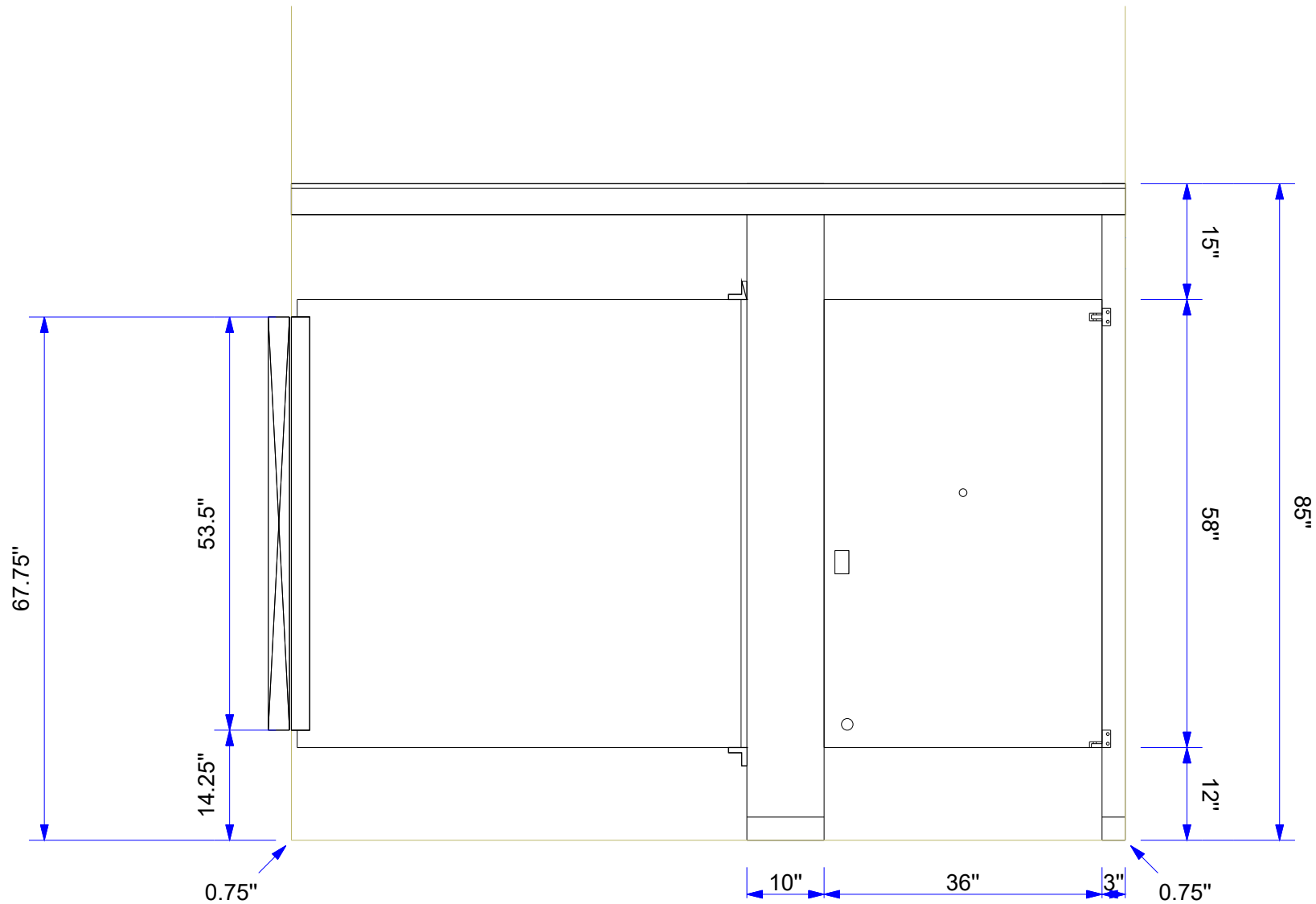


|   |   |                                     |
|---|---|-------------------------------------|
| <b>ASI Global Partitions</b><br>Eastanollee, GA 30538 • 708-442-6800 • <a href="http://www.asi-globalpartitions.com">www.asi-globalpartitions.com</a> | <b>Room Name:</b> WOMENS                          | <b>Quantity:</b> 1 (thus)           |
|   | <b>Material:</b> Integrated Privacy Powder Coated | <b>Drawn By:</b> Christina Ziccardi |
| <b>Distributor:</b> Fry Specialty Co, Inc.  | <b>Mounting:</b> Floor Mounted Overhead Braced    | <b>Ceiling Height:</b> 108"         |
| <b>Quote Name:</b> 500 SKOKIE - 5TH FL (SQCN000191-1)   | <b>Color:</b> 2125 Grey                           | <b>Printed:</b> 01/30/2024          |



Manufacturer: ASI Global Partitions | Compartment Material Height: 58" Doors/Panels - 12" AFF | Door Hardware: Chrome Hinge & Indicator Latch | Compartment Brackets: Continuous Channel - Aluminum | Trim Shoes: Stainless Steel | Urinal Screen Material Height: None | Urinal Screen Brackets: None | Privacy Screen Material Height: None | Privacy Screen Brackets: None | Door Thickness: 1" | Pilaster Thickness: 1.25" | Panel/Screen Thickness: 1"

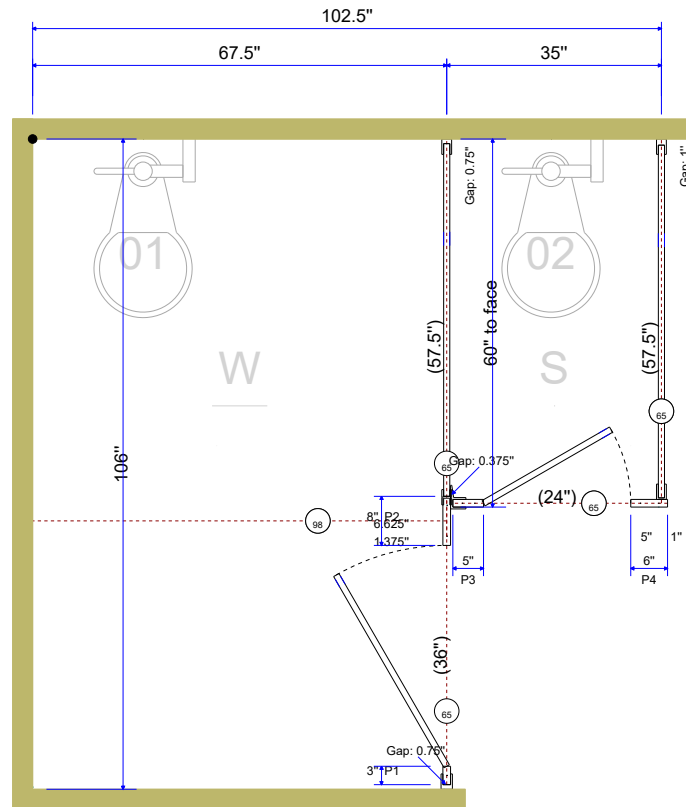
|   |   |                                     |
|---|---|-------------------------------------|
| <b>ASI Global Partitions</b>  | <b>Room Name:</b> WOMENS                          | <b>Quantity:</b> 1 (thus)           |
| Eastanollee, GA 30538 • 708-442-6800 • <a href="http://www.asi-globalpartitions.com">www.asi-globalpartitions.com</a> | <b>Material:</b> Integrated Privacy Powder Coated | <b>Drawn By:</b> Christina Ziccardi |
| <b>Distributor:</b> Fry Specialty Co, Inc.  | <b>Mounting:</b> Floor Mounted Overhead Braced    | <b>Ceiling Height:</b> 108"         |
| <b>Quote Name:</b> 500 SKOKIE - 5TH FL (SQCN000191-1)   | <b>Color:</b> 2125 Grey                           | <b>Printed:</b> 01/30/2024          |



|   |  |                              |
|---|--|------------------------------|
| <b>ASI Global Partitions</b><br>Eastanollee, GA 30538 • 708-442-6800 • <a href="http://www.asi-globalpartitions.com">www.asi-globalpartitions.com</a> | Room Name: WOMENS                          | Quantity: 1 (thus)           |
|   | Material: Integrated Privacy Powder Coated | Drawn By: Christina Ziccardi |
| Distributor: Fry Specialty Co, Inc.   | Mounting: Floor Mounted Overhead Braced    | Ceiling Height: 108"         |
| Quote Name: 500 SKOKIE - 5TH FL (SQCN000191-1)  | Color: 2125 Grey                           | Printed: 01/30/2024          |

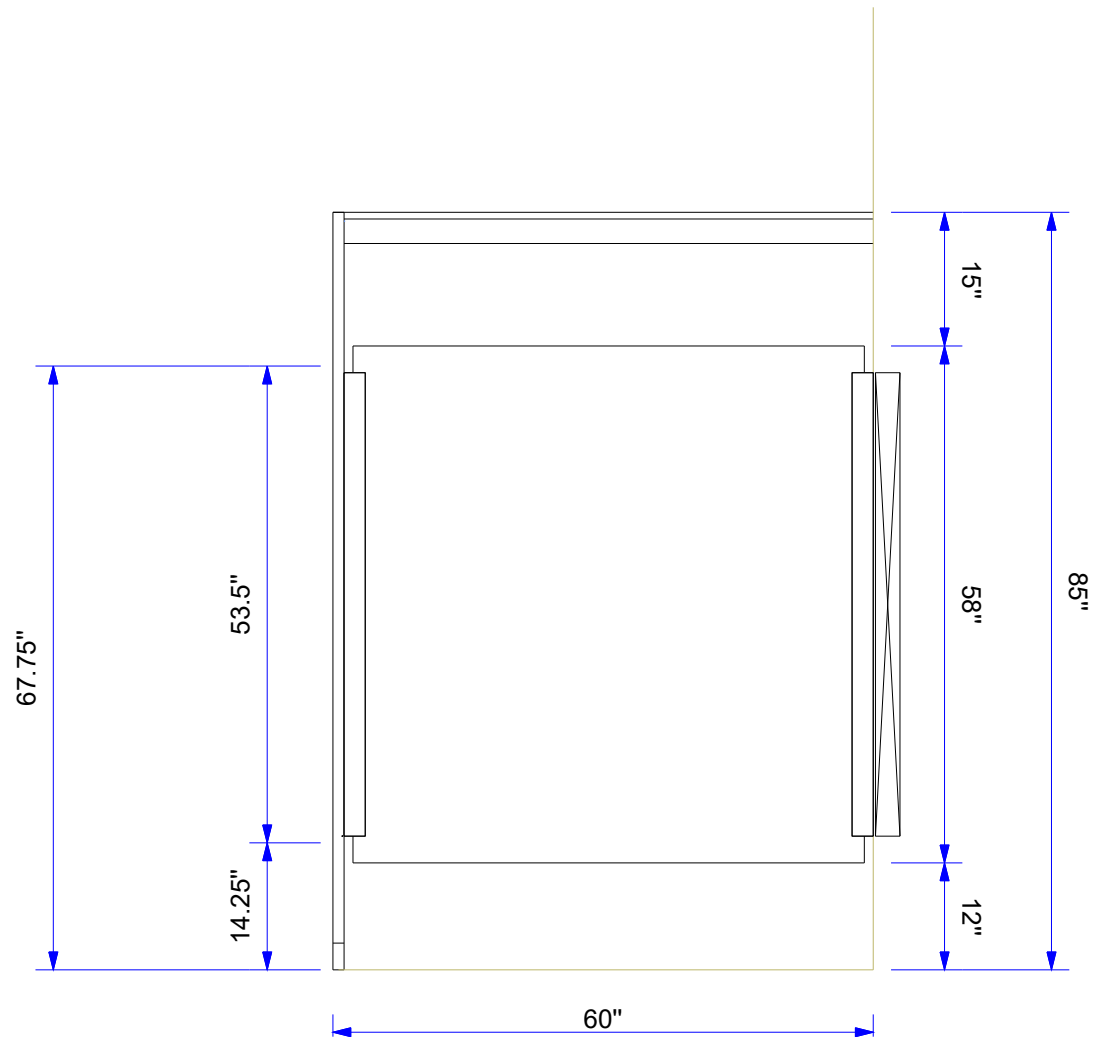
# LEGEND

(R) Grab Bar Reinf. (H) Headrail



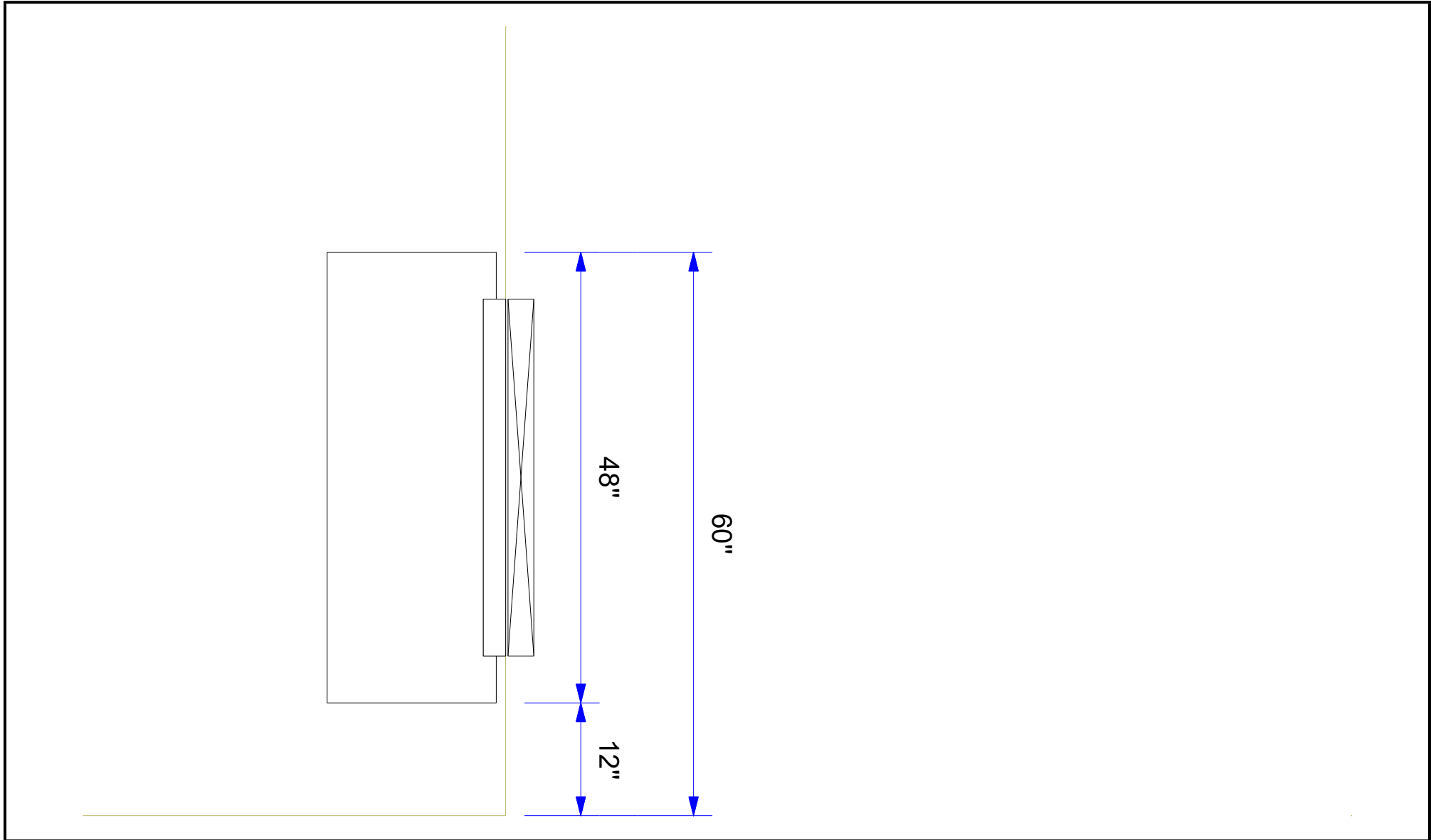
(17.5" X 48")  
Urinal Screen (US)

|   |  |                              |
|---|--|------------------------------|
| <b>ASI Global Partitions</b><br>Eastanollee, GA 30538 • 708-442-6800 • <a href="http://www.asi-globalpartitions.com">www.asi-globalpartitions.com</a> | Room Name: MENS                            | Quantity: 1 (thus)           |
|   | Material: Integrated Privacy Powder Coated | Drawn By: Christina Ziccardi |
| Distributor: Fry Specialty Co, Inc.   | Mounting: Floor Mounted Overhead Braced    | Ceiling Height: 108"         |
| Quote Name: 500 SKOKIE - 5TH FL (SQCN000191-1)  | Color: 2125 Grey                           | Printed: 01/30/2024          |

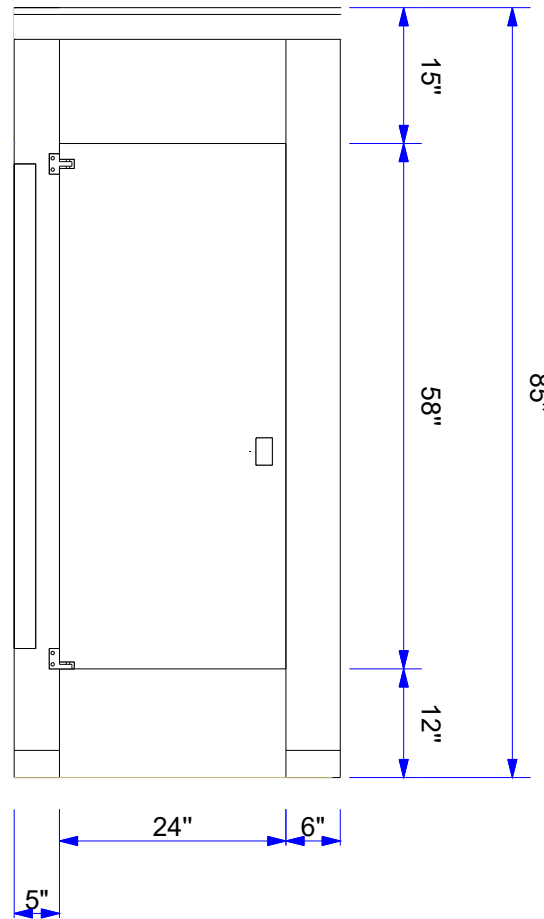


|   |  |                              |
|---|--|------------------------------|
| <b>ASI Global Partitions</b><br>Eastanollee, GA 30538 • 708-442-6800 • <a href="http://www.asi-globalpartitions.com">www.asi-globalpartitions.com</a> | Room Name: MENS                            | Quantity: 1 (thus)           |
|   | Material: Integrated Privacy Powder Coated | Drawn By: Christina Ziccardi |
| Distributor: Fry Specialty Co, Inc.   | Mounting: Floor Mounted Overhead Braced    | Ceiling Height: 108"         |
| Quote Name: 500 SKOKIE - 5TH FL (SQCN000191-1)  | Color: 2125 Grey                           | Printed: 01/30/2024          |



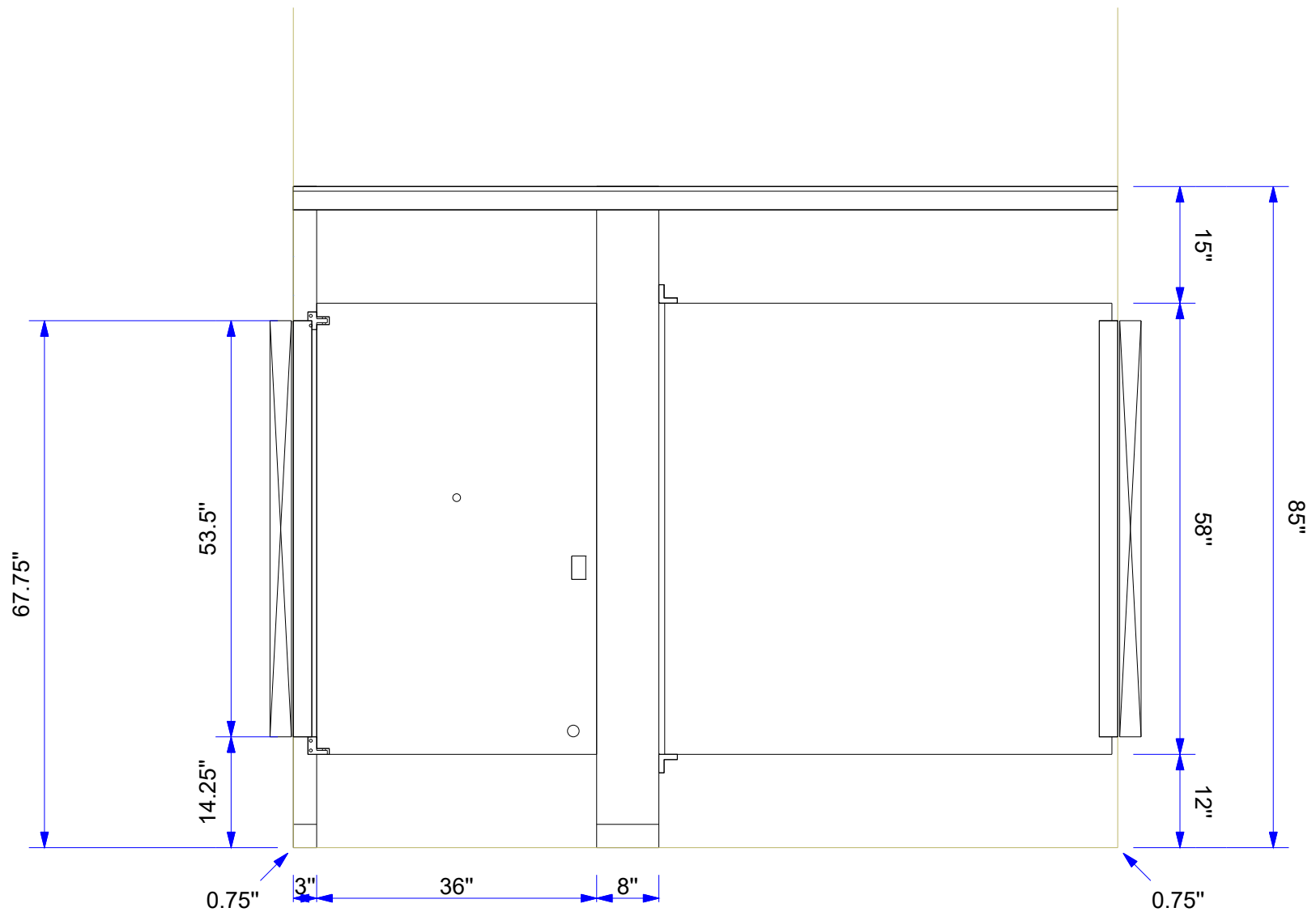


|   |   |                                     |
|---|---|-------------------------------------|
| <b>ASI Global Partitions</b><br>Eastanollee, GA 30538 • 708-442-6800 • <a href="http://www.asi-globalpartitions.com">www.asi-globalpartitions.com</a> | <b>Room Name:</b> MENS                            | <b>Quantity:</b> 1 (thus)           |
|   | <b>Material:</b> Integrated Privacy Powder Coated | <b>Drawn By:</b> Christina Ziccardi |
| <b>Distributor:</b> Fry Specialty Co, Inc.  | <b>Mounting:</b> Floor Mounted Overhead Braced    | <b>Ceiling Height:</b> 108"         |
| <b>Quote Name:</b> 500 SKOKIE - 5TH FL (SQCN000191-1)   | <b>Color:</b> 2125 Grey                           | <b>Printed:</b> 01/30/2024          |



Manufacturer: ASI Global Partitions | Compartment Material Height: 58" Doors/Panels - 12" AFF | Door Hardware: Chrome Hinge & Indicator Latch | Compartment Brackets: Continuous Channel - Aluminum | Trim Shoes: Stainless Steel | Urinal Screen Material Height: 48" | Urinal Screen Brackets: Continuous Channel - Aluminum | Privacy Screen Material Height: None | Privacy Screen Brackets: None | Door Thickness: 1" | Pilaster Thickness: 1.25" | Panel/Screen Thickness: 1"

|   |   |                                     |
|---|---|-------------------------------------|
| <b>ASI Global Partitions</b>  | <b>Room Name:</b> MENS                            | <b>Quantity:</b> 1 (thus)           |
| Eastanollee, GA 30538 • 708-442-6800 • <a href="http://www.asi-globalpartitions.com">www.asi-globalpartitions.com</a> | <b>Material:</b> Integrated Privacy Powder Coated | <b>Drawn By:</b> Christina Ziccardi |
| <b>Distributor:</b> Fry Specialty Co, Inc.  | <b>Mounting:</b> Floor Mounted Overhead Braced    | <b>Ceiling Height:</b> 108"         |
| <b>Quote Name:</b> 500 SKOKIE - 5TH FL (SQCN000191-1)   | <b>Color:</b> 2125 Grey                           | <b>Printed:</b> 01/30/2024          |



|   |  |                              |
|---|--|------------------------------|
| <b>ASI Global Partitions</b><br>Eastanollee, GA 30538 • 708-442-6800 • <a href="http://www.asi-globalpartitions.com">www.asi-globalpartitions.com</a> | Room Name: MENS                            | Quantity: 1 (thus)           |
|   | Material: Integrated Privacy Powder Coated | Drawn By: Christina Ziccardi |
| Distributor: Fry Specialty Co, Inc.   | Mounting: Floor Mounted Overhead Braced    | Ceiling Height: 108"         |
| Quote Name: 500 SKOKIE - 5TH FL (SQCN000191-1)  | Color: 2125 Grey                           | Printed: 01/30/2024          |



White 2129



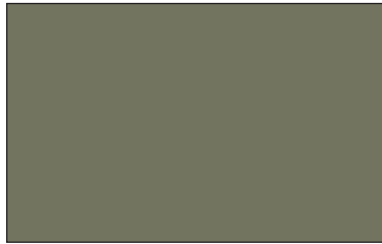
Almond 2103



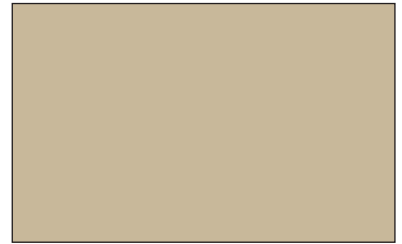
Sage 2141



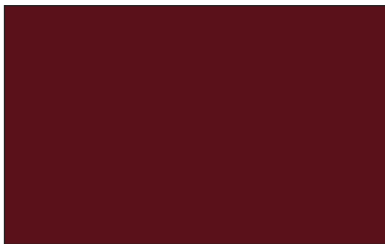
Red 2145



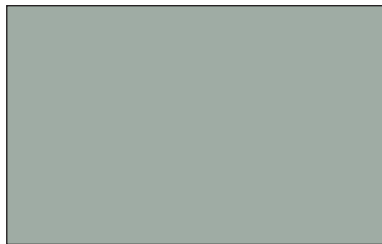
Dark Khaki 2109



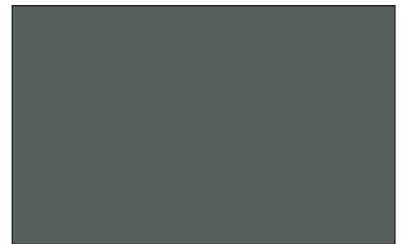
Khaki 2115



Burgundy 2148



Gray 2125



Charcoal 2123



Metallic Silver 2171



Azure 2101



Royal Blue 2135



Sandy Beach 2150



Pepper Dust 3590



Black 2127

## ASI Global Partitions

2171 Liberty Hill Road  
Eastanollee, GA 30538

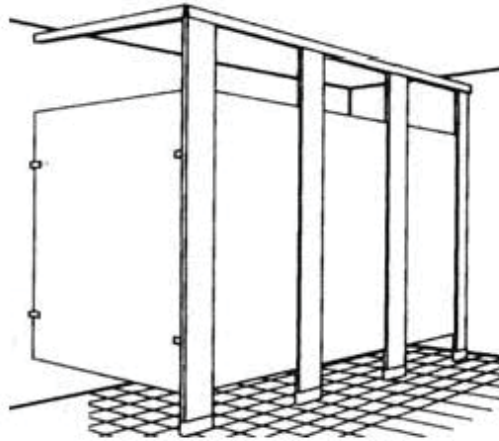
Tel: 706.827.2700 Fax: 706.827.2710

E-mail: [sales@asi-globalpartitions.com](mailto:sales@asi-globalpartitions.com)

Web: [asi-globalpartitions.com](http://asi-globalpartitions.com)

*Actual colors may vary slightly from those shown due to limitations in the printing process.*

## CARE AND MAINTENANCE



To provide powder coated core toilet partitions with the proper care and maintenance, the following instructions must be followed:

All surfaces should be cleaned with a mild liquid soap only. The finish should then be wiped and dried. In areas containing showers, either self-contained or tiled-in units, the partitions in these rooms must receive ventilation from the outside so that excess humidity can escape.

Under no circumstance should the following agents be used:

- Abrasive powders or scouring pads
- Water closet cleaners
- Ceramic tile cleaners
- Solutions containing more than 1% by volume of ammonia
- Solutions containing acids or lye
- Solutions containing enzymes

If the above instructions are adhered to, our product provides years of dependable service. Global Partitions shall not accept responsibility for product failure if the above instructions are not followed.

October 17, 2019

ASI Global Partitions warrants that its products will be free of defects in material or workmanship under normal usage from the date of invoice for a period as stated below.

**Powder Coated Steel:** Three (3) years against chipping, flaking, cracking or discoloration

**Stainless Steel:** Five (5) years against corrosion or discoloration

**Moisture Guard™ Plastic Laminate:** Five (5) years against discoloration or delamination

**Legacy Plastic Laminate:** Two (2) years against discoloration or delamination

**Black Core/Color-Thru Phenolic:** Twenty-five (25) years against delamination, breakage or corrosion

**Solid Plastic (HDPE):** Twenty-five (25) years against delamination, breakage or corrosion

If material is found to be defective during the above period, the material shall be repaired or replaced (at ASI Global Partitions' discretion) free of charge. No credits or allowances shall be issued for any labor or expenses relating to the repair replacement of components covered under the warranty plan. The repair or replacement of material shall be the sole remedy of purchaser and ASI Global Partitions shall not be liable for incidental, consequential or indirect damages caused by any defects in the partitions or any delay in repairing or replacing defective product.

These warranties shall not be applicable if vandalism, improper installation, or improper cleaning/maintenance of partitions has contributed as just cause for the partition failure. These warranties extend to commercial and industrial purchasers and do not extend to any other persons, including consumers of the partitions. These warranties are in lieu of all other warranties, express or implied, including any implied warranty of merchantability or fitness for a particular purpose or otherwise.

# CART




Shipping costs updated.

PRODUCT

QTY

QTY


SUBTOTAL

|   |   |              |          |
|---|---|--------------|----------|
|   | <div><div>Bobrick B-3574 Toilet Paper Dispenser</div><div><del>\$410.72</del> <u>\$390.18</u></div></div>   | <div>1</div> | \$390.18 |
|  | <div><div>Bobrick B-34745 (Formerly 819844) Recessed Toilet Seat-Cover and Toilet Tissue Dispenser</div><div><del>\$366.39</del> <u>\$348.07</u></div></div>    | <div>1</div> | \$348.07 |
|  | <div><div>Bobrick B-3479 ClassicSeries® Surface Mounted Toilet Seat-Cover and Toilet Tissue Dispenser</div><div><del>\$473.51</del> <u>\$449.83</u></div></div> | <div>1</div> | \$449.83 |

Bobrick B-3579 Surface

We're Online!  
How may I help you today?



|   |   |              |          |
|---|---|--------------|----------|
|  | <div><div>Bobrick B-3579 Surface Mounted Sanitary</div><div><del>\$527.68</del> <u>\$510.80</u></div></div> | <div>1</div> | \$510.80 |
|---|---|--------------|----------|



Disposal, Seat-Cover  
and Toilet Tissue  
Dispenser

~~\$87.00~~ \$71.00

~~\$87.00~~



Bobrick B-6806x36 Grab  
Bar

~~\$39.50~~ \$37.53

\$75.05



Bobrick B-6806x42 Grab  
Bar

~~\$42.26~~ \$40.15

\$80.29



Bobrick B-6806x18 Grab  
Bar

~~\$32.95~~ \$31.30

\$62.61



Bobrick B-47064 25  
Napkin/Tampon Vendor

~~\$1,150.69~~ \$1,093.16

\$1,093.16

EMPTY CART

COUPON

Coupon code

APPLY COUPON



# CART TOTALS

|          |   |
|----------|---|
| Subtotal | \$3,009.99  |
| Shipping | <div><div><input checked="" type="radio"/></div>Free Ground Shipping</div> <div><div><input type="radio"/></div>Ground: <b>\$168.56</b></div> <div><div><input type="radio"/></div>3 Day Select: <b>\$371.35</b></div> <div><div><input type="radio"/></div>2nd Day Air: <b>\$506.52</b></div> <div><div><input type="radio"/></div>Next Day Air: <b>\$1,162.21</b></div> |

Shipping to IL 60409.

CHANGE ADDRESS

|     |          |
|-----|----------|
| Tax | \$188.12 |
|-----|----------|

|       |            |
|-------|------------|
| Total | \$3,198.11 |
|-------|------------|

UPDATE CART



EMAIL CART

PROCEED TO CHECKOUT

YOU MAY BE INTERESTED IN