



Estimate

ADDRESS
EPCO
ATTN: TRACI
RE: AMERICAN HERITAGE PLANTATION

ESTIMATE 11233
DATE 03/12/2024

SALES REP
CHRISTINA 619-635-2888

ACTIVITY	DESCRIPTION	QTY
MATERIAL- EXPENSE	HDPE/SOLID PLASTIC HINY HIDERS BY SCRANTON	
STYLE	FLOOR MOUNTED/OVERHEAD BRACED * SHIP LAP DOORS (CONT. HINGES QUOTED AS TYPICAL)	
HARDWARE	CONT ALUM BRACKETS, ST/STL SHOES, CONT ST/STL HELIX HINGES, SHIP LAP HIGH PRIVACY ST/STL LATCH/KEEPER AND 2 PULLS PER HDGP DOOR	
COLOR	STANDARD COLOR INCLUDED	
STALLS	INCLUDED IN PROPOSAL	5
SCREENS	WALL HUNG 24 X 48	2
STANDARD FREIGHT INCLUDED	BASED ON (1) SINGLE SHIPMENT TO 33405	
*** SALES TAX WILL BE ADDED IF SHIPPING TO CA, TN, TX, OK, NY, FL, GA, MA, NJ, WA, AZ, MI, MN, NC, VA, IL AND MD.		

• QUOTES ARE VALID FOR 30 DAYS
• QUANTITIES & DESCRIPTIONS NOT GUARANTEED TO AGREE WITH PLANS AND/OR
SPECS. IT IS YOUR RESPONSIBILITY TO REVIEW ENTIRE QUOTE/SUBMITTAL PRIOR TO
BIDDING YOUR PROJECT. YOU ARE ALSO RESPONSIBLE FOR VERIFYING LOCAL
MUNICIPALITY / CODE COMPLIANCE.
ANY CHANGES MADE CAN IMPACT PRICING.

TOTAL

\$6,625.00

Accepted By

Accepted Date

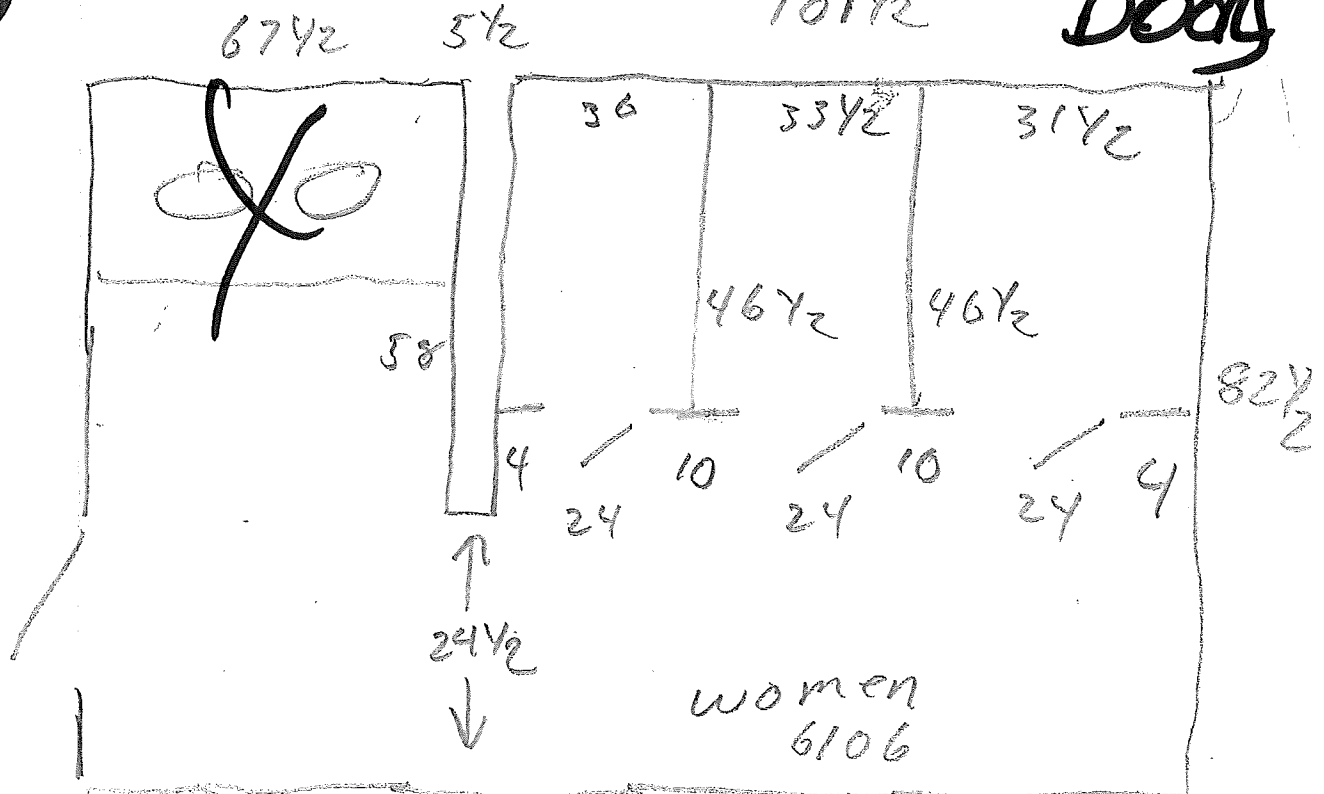
Shipping Information (PLEASE MARK ALL THAT APPLY):

- 
- ☐ Ship ASAP
 - ☐ Do NOT Ship Before Date ____/____/____
 - ☐ Lift Gate Fee Add. \$125.00
 - ☐ **(REQUIRED IF NO FORKLIFT OR LOADING DOCK)**
 - ☐ Residential / Non-Commercial Delivery Add. \$95.00*
 - ☐ Notification call prior to delivery Add \$40.00

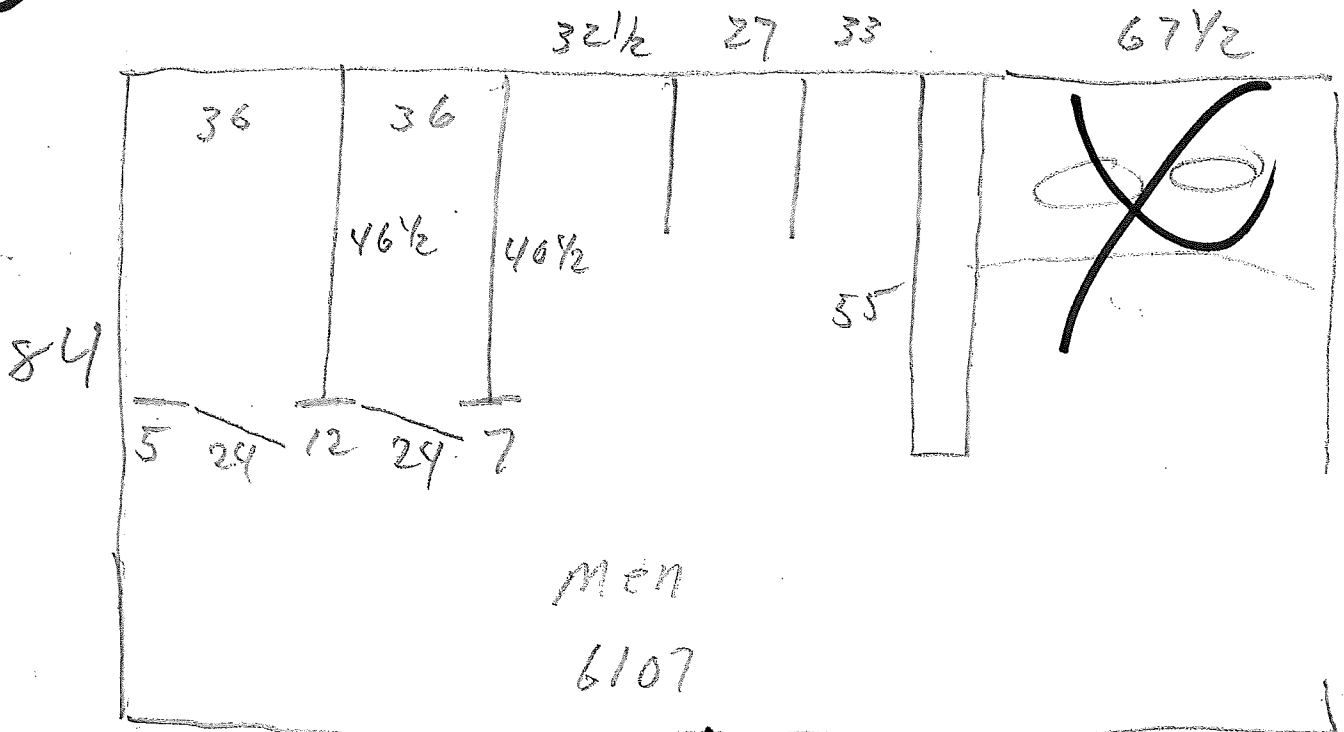
APPROVED: _____

*** The term "residential/non-commercial" also includes apartments, places of worship, schools, pre-schools, day cares, camps, farms, public storage facilities, business operating within a private residence, and other such locations not generally recognized as commercial locations and shall apply to the entire premises.**

SCRANTON - EX - BLACK
 FLOOR + HEORAIL - SHIP CAD
 DOORS



CONTINUOUS BRACKET



AMERICAN HERITAGE
 PLANTATION

COLOR & TEXTURE OPTIONS

TRADITIONAL COLOR COLLECTION



BLACK

OP



SHALE

OP



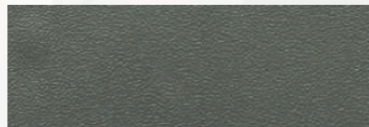
GLACIER GREY

OP



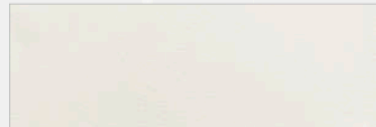
BLACK

EX



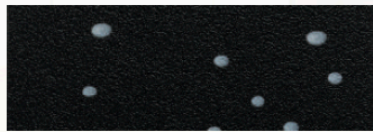
CHARCOAL GREY

OP



WHITE

OP



PAISLEY

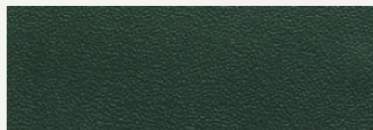
OP



GREY

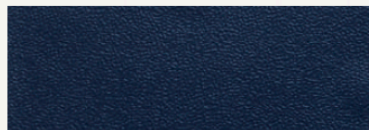
OP

BOLD COLOR COLLECTION



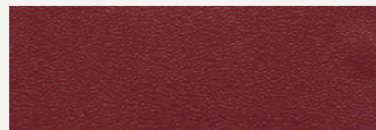
HUNTER GREEN

OP



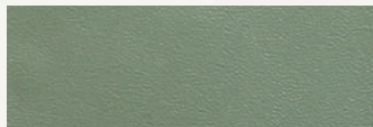
BLUEBERRY

OP



BURGUNDY

OP



FOSSIL

OP



FRENCH BLUE

OP

CUSTOM COLORS AVAILABLE UPON REQUEST

Color matching is limited by printing process. Actual samples are available and recommended prior to color selections.

*Special orders require extended lead times.
Minimum order requirements may apply.

Textures



ROTARY BRUSHED

RB



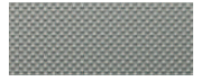
ORANGE PEEL

OP



HAMMERED

H



EX

EX

METALLIC COLOR COLLECTION



STAINLESS

H



BRONZE

H



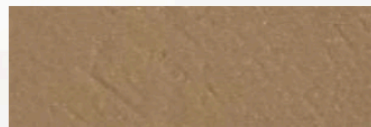
NICKEL

H



STAINLESS

RB



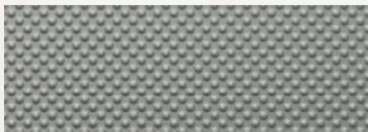
BRONZE

RB



NICKEL

RB



STAINLESS

EX

WARM TONE COLOR COLLECTION



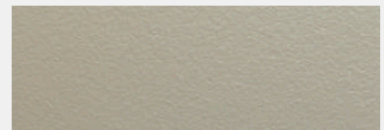
MAHOGANY

OP



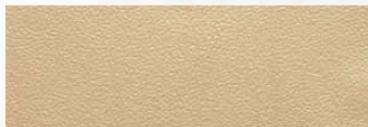
SANDSTONE

OP



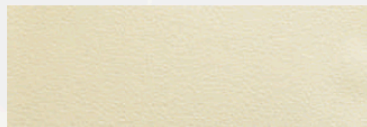
CONCRETE

OP



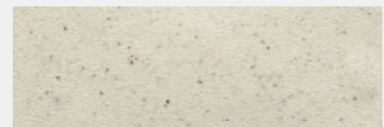
DESERT BEIGE

OP



LINEN

OP



SANDCASTLE

OP



MOCHA

OP

SCRANTON LEAD TIME ESTIMATES

LEAD TIME	OFFICE
3-4 BUSINESS DAYS	QUOTE
5-6 BUSINESS DAYS	SHOP DRAWNGS (PARTITIONS/LOCKERS)
6-7 BUSINESS DAYS	PARTITIONS RELEASES (CUSTOMER SERVICE & DRAFTING PROCESSING TIME)
6-7 BUSINESS DAYS	LOCKER RELEASES
LEAD TIME	MANUFACTURING
9-11 BUSINESS DAYS	HINY HIDERS (PENDING SHEET AVAILABILITY)
8-9 WEEKS	TUFFTEC/DURALIFE LOCKERS
9-11 BUSINESS DAYS	ECLIPSE PARTITIONS
9-11 BUSINESS DAYS	ARIA PARTITIONS
LEAD TIME	COMPONENT ORDERS
4-6 BUSINESS DAYS	PLASTIC PARTS AND S7 REPLACEMENTS
4-6 BUSINESS DAYS	HARDWARE
3-4 WEEKS	LOCKERS (VARIES BY STYLE/GENERATION)