



Estimate

ADDRESS
ACGC
ATTN: ANA HARTWELL
RE: CHRR PHASE 3

SHIP TO
Valued Customer
Project address: 95501

ESTIMATE 11504
DATE 06/24/2024

SALES REP
CHRISTINA 619-635-2888

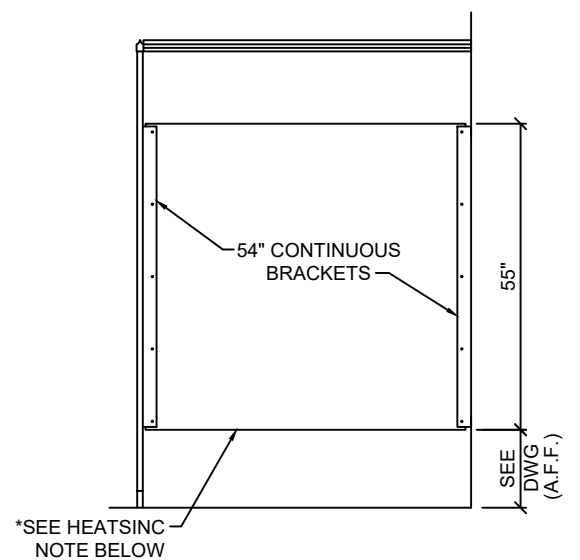
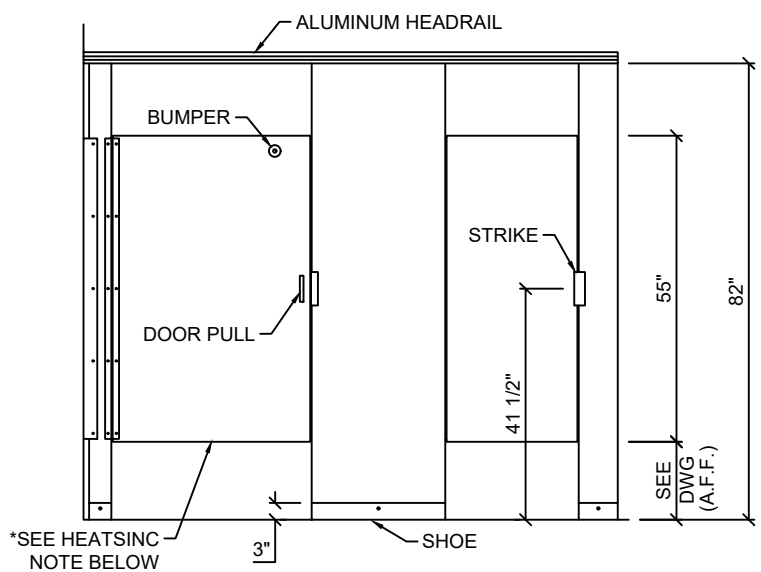
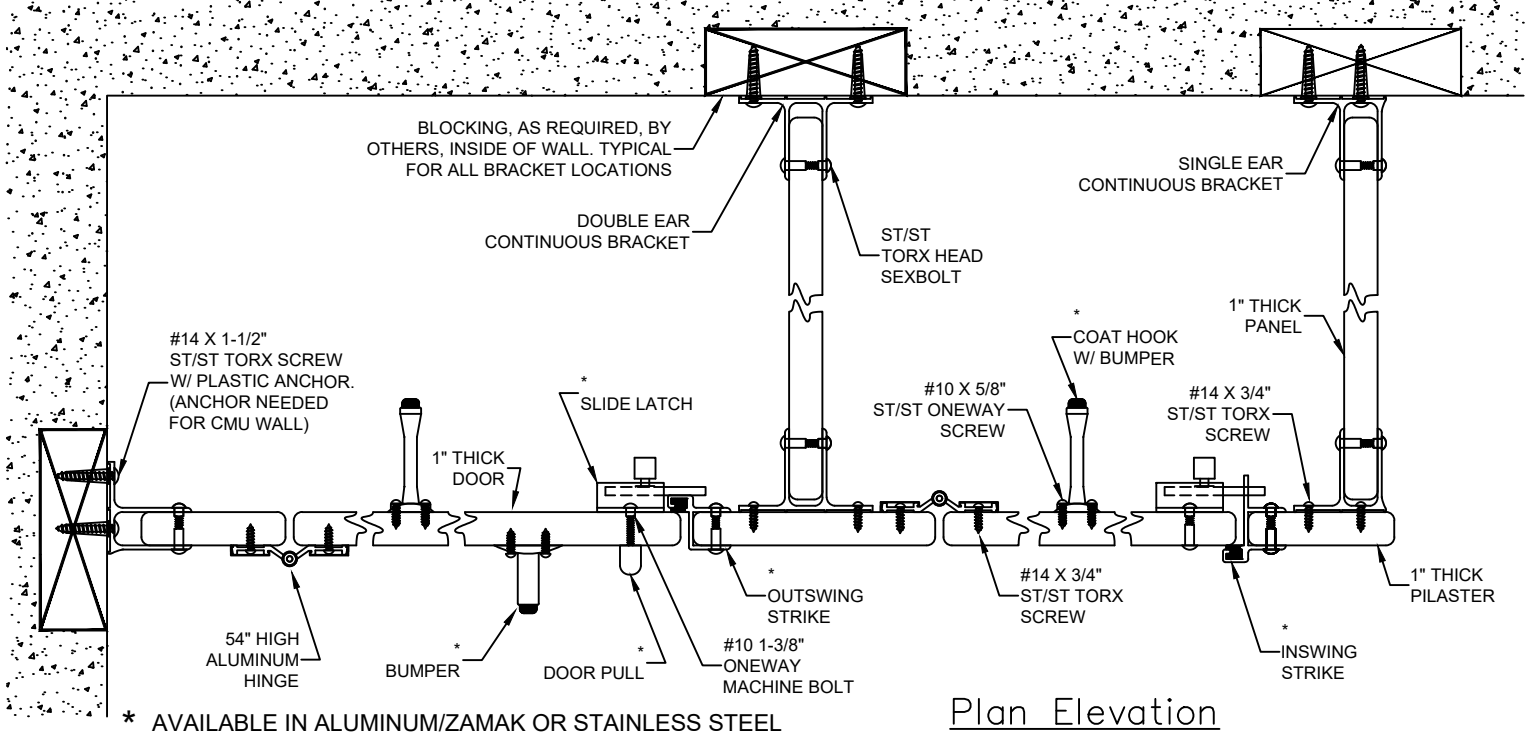
ITEM	DESCRIPTION	QTY
MATERIAL-EXPENSE	HDPE/SOLID PLASTIC HINY HIDERS BY SCRANTON	
STYLE	FLOOR MOUNTED/OVERHEAD BRACED	
HARDWARE	HARDWARE INCLUDED PER ATTACHED	
COLOR	STANDARD COLOR INCLUDED	
STALLS	INCLUDED IN PROPOSAL	8
SCREENS	INCLUDED IN PROPOSAL	1
STANDARD FREIGHT INCLUDED	BASED ON (1) SINGLE SHIPMENT TO 95501	
	*** SALES TAX WILL BE ADDED IF SHIPPING TO CA, TN, TX, OK, NY, FL, GA, MA, NJ, WA, AZ, MI, MN, NC, VA, IL AND MD.	

• QUOTES ARE VALID FOR 30 DAYS
• QUANTITIES & DESCRIPTIONS NOT GUARANTEED TO AGREE WITH PLANS AND/OR SPECS. IT IS YOUR RESPONSIBILITY TO REVIEW ENTIRE QUOTE/SUBMITTAL PRIOR TO BIDDING YOUR PROJECT. YOU ARE ALSO RESPONSIBLE FOR VERIFYING LOCAL MUNICIPALITY / CODE COMPLIANCE.
ANY CHANGES MADE CAN IMPACT PRICING.

SUBTOTAL	9,070.00
TAX (0%)	0.00
TOTAL	\$9,070.00

Accepted By

Accepted Date



801 E COREY ST. SCRANTON, PA. 18505 Phone (570)348-0997

STANDARD ELEVATIONS

(Drawings are not to scale)

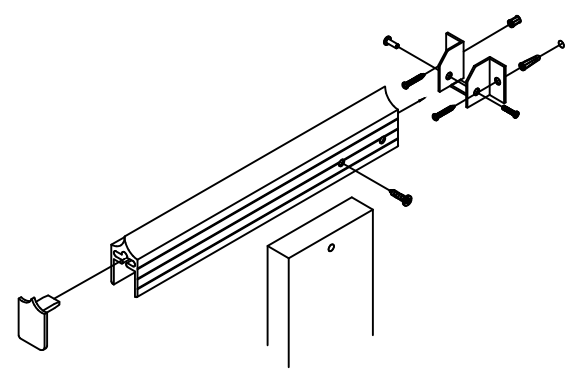
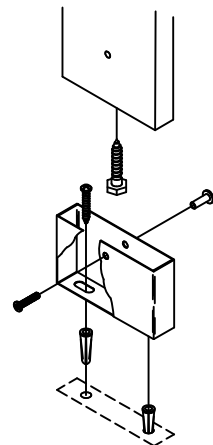
- *Floor Mounted Overhead Braced
- *54" Aluminum Spring Loaded Hinge (closed only)
- *Continuous Brackets (Aluminum or Stainless Steel Available)

NOTE: Hinge is spring loaded tension, H.C. & Standard doors to set return to "closed" (0°).

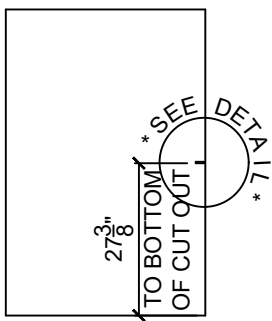
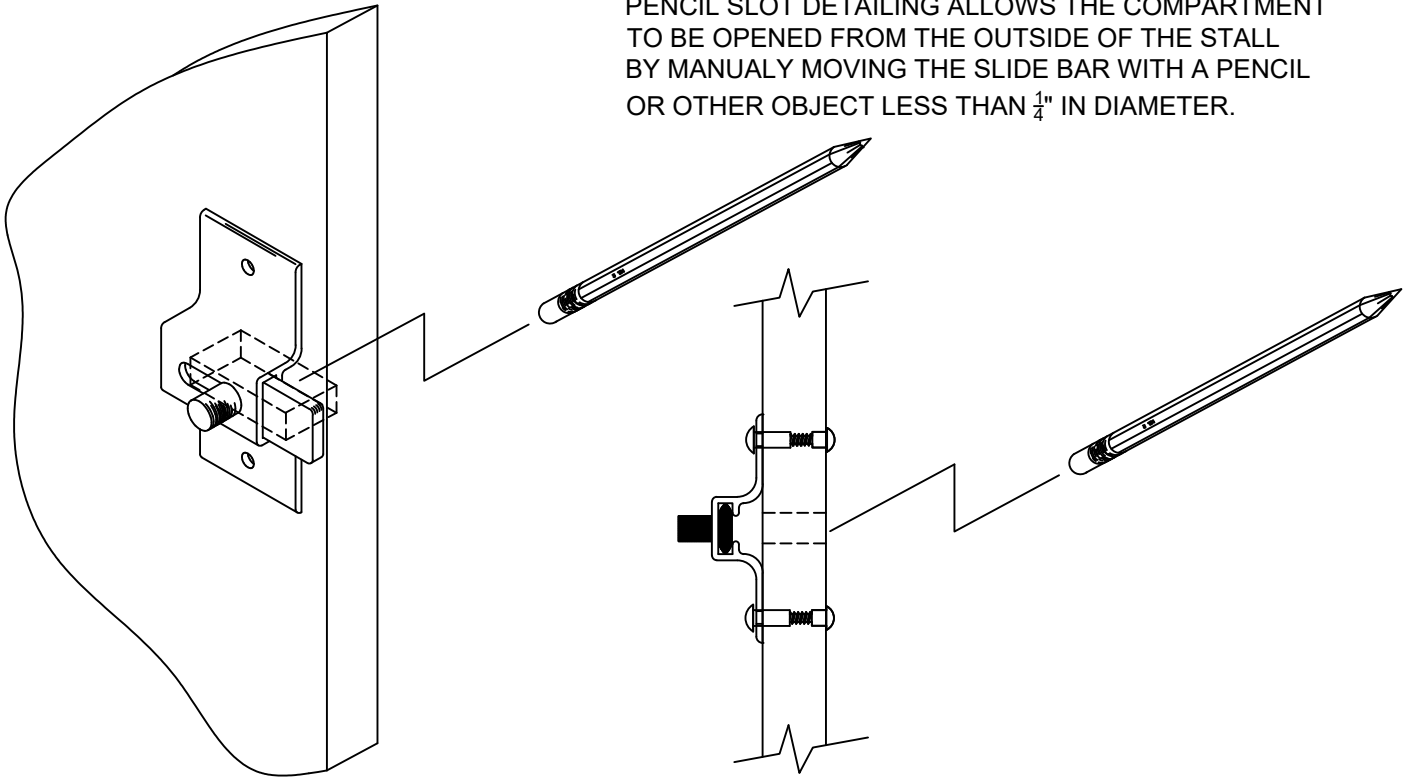
Note: "Job-Specific Specifications" for all orders are located on the top of the shop drawing layouts.

* HEATSINC NOTE: Heatsinc is to be placed on the bottom of the panels & doors. (If specified)

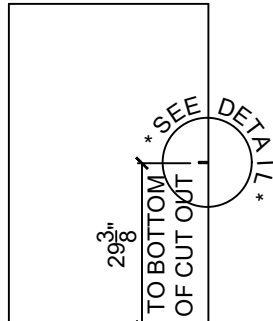
Details



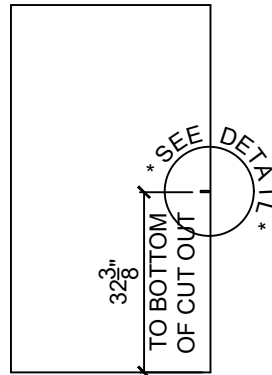
PENCIL SLOT DETAILING ALLOWS THE COMPARTMENT TO BE OPENED FROM THE OUTSIDE OF THE STALL BY MANUALLY MOVING THE SLIDE BAR WITH A PENCIL OR OTHER OBJECT LESS THAN $\frac{1}{4}$ " IN DIAMETER.



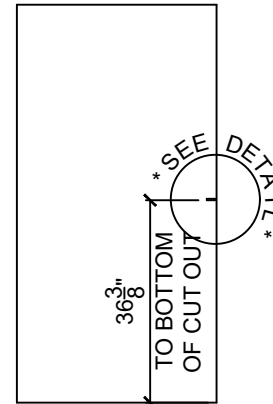
14" A.F.F.



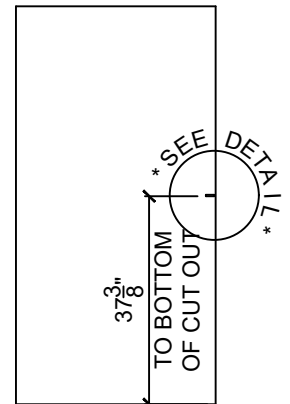
12" A.F.F.



9" A.F.F.



5" A.F.F.



4" A.F.F.

SEE FLOOR PLAN FOR ABOVE FINISH FLOOR (A.F.F.) HEIGHT

STANDARD ELEVATIONS

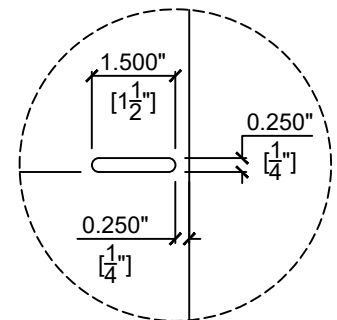
(Drawings are not to scale)

PENCIL SLOT DETAILING IS AVAILABLE WITH ALL HARDWARE TO ALLOW FOR EMERGENCY ACCESS.

Note: "Job-Specific Specifications" for all orders are located on the top of the shop drawing layouts.

* **HEATSINC NOTE:** Heatsinc is to be placed on the bottom of the panels & doors. (If specified)

EMERGENCY SLOT DETAIL

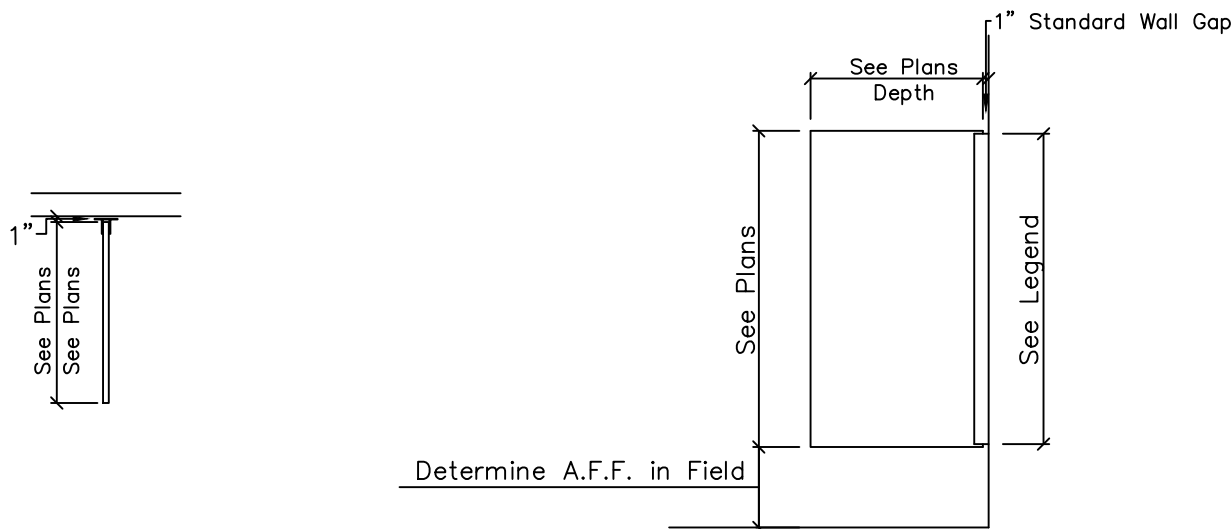


SCRANTON
PRODUCTS



HINY
HIDERS

Wall Hung Screen Elevation with Continuous Bracket



Plan View

Side View

SINGLE & DOUBLE EAR BRACKET LEGEND

(Note: Due to some limited bracket sizes, field trimming may be required)

Continuous Aluminum – Available Sizes: 41”; 47”; 54”; 68”; & 71”
Continuous Stainless Steel – Available Sizes: 41”; 54”; & 71” (41” supplied for 48” high screens)
Continuous Plastic – Available Sizes: 41”; & 54” (54” supplied for 48” high screens)



SCRANTON
PRODUCTS



HINY
HIDERS

801 E COREY ST. SCRANTON, PA. 18505

Phone (570)348-0997

STANDARD ELEVATIONS

(Drawings are not to scale)

*Urinal Screens/ Privacy Screens

*Continuous Brackets (See legend for available sizes)

Note: "Job-Specific Specifications" for all orders are located on the top of the shop drawing layouts.

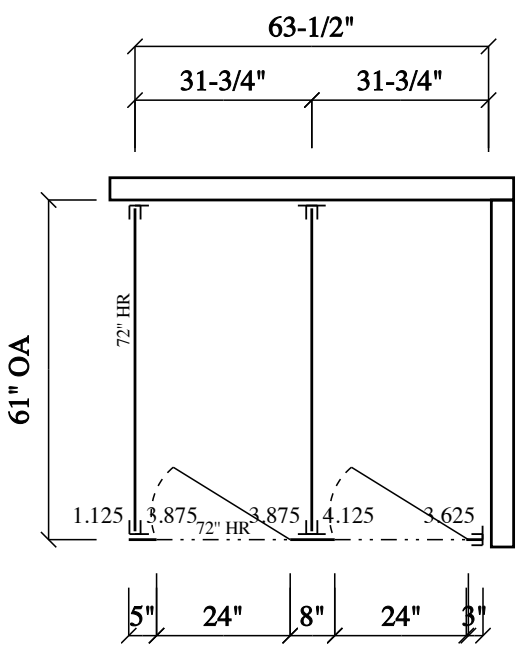

* **HEATSINC NOTE:** Heatsinc is to be placed on the bottom of the panels & doors. (If specified)

NOTES:

1. SEE PLANS FOR SCREEN DEPTH & HEIGHT. SCREEN WILL BE PROVIDED AS QUOTED/DRAWN UNLESS OTHERWISE DIRECTED.

2. ANY SCREEN 30" DEPTH OR GREATER IS RECOMMENDED TO HAVE A FLOOR SUPPORTED PILASTER FOR STABILITY.

CUSTOMER NOTES:

Job Specs	Stall Mounting Style: Floor Mounted Headrail Braced		Pilaster Height: 82.75"		Material Option: Hiny Hider - Standard Color Collection option (does not meet NFPA 286 or ASTM E84)	
			Color: Unknown			
Bracket Type: 54"Continuous Aluminum Shoe Type: Stainless			Hinge Type: Continuous Alum, Spring, 3/4" Torx (Clean Look) Door Hrdw Type: Aluminum (No Emergency Access), .		Pencil Slot: No	Heat-sinc: No Fasteners: 2 1/2", 3/4" Torx (Clean Look)
Room Name: MENS 107			14" AFF - 55" High Doors, 55 High Panels			
Notes:						
<div></div>						
Please Note: Pencil Slot is required to achieve Emergency Access. Your order will be placed WITHOUT Pencil Slot unless otherwise noted.						
<div> 801 E COREY ST. SCRANTON, PA. 18505 Phone (570)348-0997</div>			CUSTOMER NAME:		SCALE:	SERIAL #:
			FRY SPECIALTY COMPANY		NTS	C-1378990 - DWG C-1378992 - Room
			PROJECT NAME:		DATE:	REVISION #:
CHRR - PHASE 3			6/24/2024		SO#	Standard Notes: 1. Doors larger than 30" are to be set to the closed position. 2. Where pilasters and panels meet there is a 1/2" space. 3. Where pilasters and/or panels meet a wall there is a 1" space. 4. Headrail shall be supplied in 12" increments, ranging from 36" to 84". 5. Pilasters over 24" will receive a doghouse detail.
					DRAWN BY: Rob Fry	

Job Specs	Stall Mounting Style: Floor Mounted Headrail Braced		Pilaster Height: 82.75"		Material Option: Hiny Hider - Standard Color Collection option (does not meet NFPA 286 or ASTM E84)	
			Color: Unknown			
Bracket Type: 54"Continuous Aluminum Shoe Type: Stainless			Hinge Type: Continuous Alum, Spring, 3/4" Torx (Clean Look)		Pencil Slot: No	Heat-sinc: No
			Door Hrdw Type: Aluminum (No Emergency Access), .		Fasteners: 2 1/2", 3/4" Torx (Clean Look)	
Room Name: WOMENS 106			14" AFF - 55" High Doors, 55 High Panels			
Notes:						
<div></div>						
Please Note: Pencil Slot is required to achieve Emergency Access. Your order will be placed WITHOUT Pencil Slot unless otherwise noted.						
<div><div>SCRANTON PRODUCTS</div><div>HINY HIDERS</div></div> <div>801 E COREY ST. SCRANTON, PA. 18505</div> <div>Phone (570)348-0997</div>			CUSTOMER NAME:		SCALE:	SERIAL #:
			FRY SPECIALTY COMPANY		NTS	C-1378990 - DWG C-1378993 - Room
			PROJECT NAME:		DATE:	REVISION #:
			CHRR - PHASE 3		6/24/2024	Rev 0 SO# DRAWN BY: Rob Fry
			Standard Notes:			
			1. Doors larger than 30" are to be set to the closed position. 2. Where pilasters and panels meet there is a 1/2" space. 3. Where pilasters and/or panels meet a wall there is a 1" space. 4. Headrail shall be supplied in 12" increments, ranging from 36" to 84". 5. Pilasters over 24" will receive a doghouse detail.			
801 E COREY ST. SCRANTON, PA. 18505			Phone (570)348-0997			

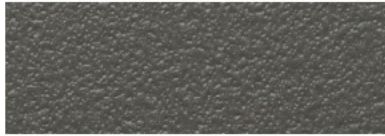
Job Specs	Stall Mounting Style: Floor Mounted Headrail Braced	Pilaster Height: 82.75"	Material Option: Hiny Hider - Standard Color Collection option (does not meet NFPA 286 or ASTM E84)		
			Color: Unknown		
Bracket Type: 54"Continuous Aluminum Shoe Type: Stainless			Hinge Type: Continuous Alum, Spring, 3/4" Torx (Clean Look) Door Hrdw Type: Aluminum (No Emergency Access), .		Pencil Slot: No Heat-sinc: No Fasteners: 2 1/2", 3/4" Torx (Clean Look)
Room Name: MENS 229			14" AFF - 55" High Doors, 55 High Panels		
Notes:					
<div><div><div><div><div><div></div><div>109-3/4"</div></div><div><div>63" OA</div><div></div></div><div><div><div><div><div></div><div>60" HR</div><div>4" Pil.</div><div>60" HR</div></div><div><div>57-1/4"</div><div>54.75" Panel</div><div>12"</div><div>36"</div><div>3"</div></div><div><div>1" Gap</div><div>0.5" Gap / 0.5" Gap</div><div>1" Gap</div></div></div><div><div>84" HR</div><div></div></div></div></div></div></div><div><div><div><div><div></div><div>24"x48"</div><div>25" OA</div></div><div>Qty: 1 Wall Hung</div></div></div></div></div></div>					
Please Note: Pencil Slot is required to achieve Emergency Access. Your order will be placed WITHOUT Pencil Slot unless otherwise noted.					
<div><div><div><div></div><div>SCRANTON</div><div>PRODUCTS</div></div><div><div><div></div><div>HINY</div><div>HIDERS</div></div></div></div><div>801 E COREY ST. SCRANTON, PA. 18505</div><div>Phone (570)348-0997</div></div>			CUSTOMER NAME: FRY SPECIALTY COMPANY		SCALE: NTS
PROJECT NAME: CHRR - PHASE 3			DATE: 6/24/2024	SERIAL #: C-1378990 - DWG C-1378997 - Room	Standard Notes: 1. Doors larger than 30" are to be set to the closed position. 2. Where pilasters and panels meet there is a 1/2" space. 3. Where pilasters and/or panels meet a wall there is a 1" space. 4. Headrail shall be supplied in 12" increments, ranging from 36" to 84". 5. Pilasters over 24" will receive a doghouse detail.
				REVISION #: Rev 0	
				SO#	
				DRAWN BY: Rob Fry	

TRADITIONAL COLOR COLLECTION



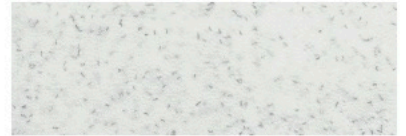
BLACK†

OP



SHALE†

OP



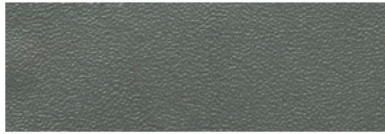
GLACIER GREY†

OP



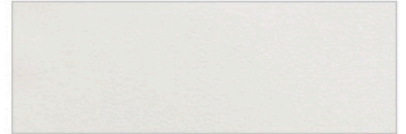
BLACK†

EX



CHARCOAL GREY†

OP



WHITE†

OP



PAISLEY†

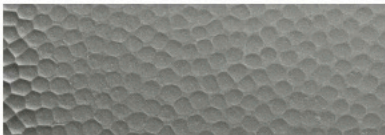
OP



GREY†

OP

METALLIC COLOR COLLECTION



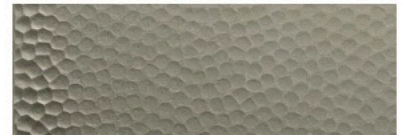
STAINLESS†

H



BRONZE†

H



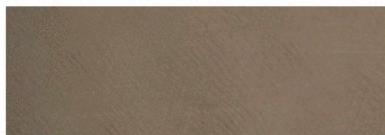
NICKEL†

H



STAINLESS†

RB



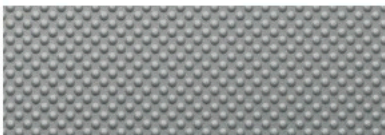
BRONZE†

RB



NICKEL†

RB



STAINLESS†

EX

BOLD

COLOR COLLECTION



HUNTER GREEN†

OP



BLUEBERRY†

OP



BURGUNDY†

OP



FOSSIL†

OP

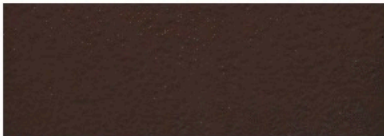


MIDNIGHT†

OP

WARM TONE

COLOR COLLECTION



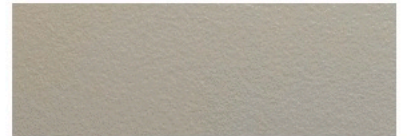
MAHOGANY†

OP



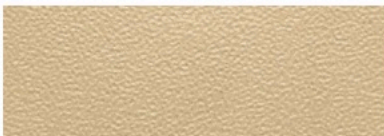
SANDSTONE†

OP



CONCRETE†

OP



DESERT BEIGE†

OP



LINEN†

OP



SANDCASTLE†

OP



MOCHA†

OP

†Standard Color Collection option does not meet NFPA 286 or ASTM E84.

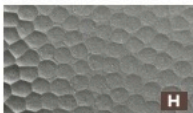
CUSTOM COLORS AVAILABLE UPON REQUEST

Color matching is limited by printing process.
Actual samples are available and recommended prior to color selections.

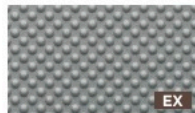
*Minimum order requirements, lead-times & upcharges may all apply.

TEXTURE

LEGEND



HAMMERED



GRIP EX



ROTARYBRUSHED



ORANGE PEEL

SCRANTON LEAD TIME ESTIMATES

LEAD TIME

OFFICE

3-4 BUSINESS DAYS

QUOTE

5-6 BUSINESS DAYS

SHOP DRAWNGS (PARTITIONS/LOCKERS)

6-7 BUSINESS DAYS

PARTITIONS RELEASES (CUSTOMER SERVICE
& DRAFTING PROCESSING TIME)

6-7 BUSINESS DAYS

LOCKER RELEASES

LEAD TIME

MANUFACTURING

9-11 BUSINESS DAYS

HINY HIDERS (PENDING SHEET AVAILABILITY)

8-9 WEEKS

TUFFTEC/DURALIFE LOCKERS

9-11 BUSINESS DAYS

ECLIPSE PARTITIONS

9-11 BUSINESS DAYS

ARIA PARTITIONS

LEAD TIME

COMPONENT ORDERS

4-6 BUSINESS DAYS

PLASTIC PARTS AND S7 REPLACEMENTS

4-6 BUSINESS DAYS

HARDWARE

3-4 WEEKS

LOCKERS (VARIES BY STYLE/GENERATION)

Scranton Products Limited Warranty

Scranton Products' Eclipses Partitions™, Hiny Hider® Partitions, Resistall Partitions®, Tufftec Lockers®, Tufftec™ benches, Duralife Lockers™, Scranton Product® brand shower stalls, dressing compartments and vanities, including products sold under the company names (Santana®, Comtec®, Capitol®) (hereinafter "warranted products") are warranted by the manufacturer to a corporation or other commercial entity which purchases the partitions and lockers for use in the conduct of its business to be free from defects in material and workmanship that (i) occur as a direct result of the manufacturing process; (ii) occur under normal use and service; (iii) occur during the warranty period; and (iv) result in breakage or delamination. Limited warranty periods are as follows:

Lockers/Benches

Tufftec Lockers ®	25 years
Tufftec ™ Benches	25 years
Duralife Lockers ™	15 years

Bathroom Partitions

Hiny Hiders ® Bathroom Partitions	25 years
Eclipse Partitions ™ <i>Patent Pending</i>	25 years
Resistall ® Bathroom Partitions	5 years

Shower Stalls/Vanities/Dressing Compartments

Scranton Products ® Shower Stalls	25 years
Scranton Products ® Vanities	25 years
Scranton Products ® Dressing Compartments	25 years

This limited warranty is subject to the following conditions:

1. The warranted products have been installed in accordance with the manufacturer's written instructions and drawings (as contained in the instruction sheet supplied with the order).
2. The limited warranty is effective only with regard to the original installation of the warranted products and not to any subsequent installation that has altered the warranted product without the consent of the manufacturer.
3. The limited warranty shall not be applicable if the defect in the warranted product has resulted from any failure or defect in the building or substructure to which the warranted product is attached (including but not limited to settling, shifting, distorting, or movement of the walls or foundation of the structure), extraordinary wear and tear, violent action of the elements (such as sunlight, lightening, hurricane, tornado, or hail), vandalism, misuse, neglect, or improper handling of the warranted product, during or after installation, or improper or insufficient ventilation of the building to which the warranted product is attached.

Subject to the above conditions, in the event that the warranted product or any portion thereof, is found to be defective in workmanship or materials within limited warranty period from the date of receipt by customer, the Manufacturer will repair or replace the defective material, or will refund the original purchase price of the defective material. The choice of remedy is in Manufacturer's sole discretion. The Manufacturer will not be liable for labor and/or removal costs connected with the claim. Replacement product will be provided as close to the original color and design as possible, although it is not guaranteed to match completely. In the event of repair or replacement, the original limited warranty shall apply to the repaired or replaced portion of the warranted products and will extend for the balance of the warranty period in effect at the time the material proved defective.

THE WARRANTY STATEMENTS CONTAINED IN THIS LIMITED WARRANTY SET FORTH THE ONLY WARRANTIES EXTENDED BY SCRANTON PRODUCTS AND ARE IN LIEU OF ALL OTHER CONDITIONS AND WARRANTIES, EITHER EXPRESSED OR IMPLIED, INCLUDING WITHOUT LIMITATION, THE IMPLIED WARRANTIES OF MERCHANTABILITY AND FITNESS FOR A PARTICULAR PURPOSE. THE PROVISIONS OF THIS WARRANTY SHALL CONSTITUTE THE ENTIRE LIABILITY OF SCRANTON PRODUCTS AND THE PURCHASER/PROPERTY OWNER'S EXCLUSIVE REMEDY FOR BREACH OF THIS WARRANTY. IN NO EVENT SHALL SCRANTON PRODUCTS BE LIABLE TO THE PURCHASER/PROPERTY OWNER FOR SPECIAL, INCIDENTAL, INDIRECT, CONSEQUENTIAL, OR PUNITIVE DAMAGES ARISING FROM THE USE OF THE WARRANTED PRODUCTS OR THE BREACH OF ANY EXPRESS OR IMPLIED WARRANTY. The laws of some states and provinces do not allow the exclusion, limitation or variation of certain conditions or warranties implied by legislation so the above limitations or exclusions may not apply to you. This Limited Warranty gives you specific legal rights and you may also have other rights that vary from state to state and province to province.

Any claim under such warranties must be made during the applicable warranty period and shall be asserted by contacting: Scranton Products, (Santana/Comtec/Capitol) 801 E. Corey Street-Scranton, PA 18505-Phone# 800-445-5148-Fax# 800-551-6993.

