

## Specifications

### Solid Plastic Partitions Floor Anchored/Overhead Braced 4.3

#### Solid Plastic Partitions with Floor Anchored/Overhead Braced Mounting Style

##### Part 1 - General

###### 1.01 Work Included

A. The toilet partitions shall be high-density polyethylene (HDPE) polymer with floor anchored/overhead braced mounting style as manufactured by **ASI Accurate Partitions**, Burr Ridge, Illinois.

B. Furnish all labor and materials necessary for completion of work in this section as shown in the approved drawings and specified herein.

**Related Work** – Specified elsewhere shall include accessories and anchorage/blocking for attachment of partitions.

##### Part 2 Product

**2.01 Door, Panels, Pilaster and Urinal Screens** – Shall be 1" thick (door and panels 55" high, pilasters 82" high) HDPE polymer that is water resistant and non-absorbent. A heat sink shall be attached as standard to the bottom of all doors and panels.

**2.02 Material** – The HDPE material shall have homogenous color throughout each component with ¼" machined edges for uniformity. Self-lubricating surface shall resist markings from pens, pencils and other writing instruments.

**2.03 Color**- Will be selected from **Accurate's** full range of standard designer colors.

**2.04 Door Hardware** - Hinges shall be 8" and fabricated from heavy-duty extruded aluminum alloy with a brushed anodized finish. Wrap-around flanges are mounted and thru-bolted to doors and pilasters with stainless steel tamper resistant barrel nuts and shoulder screws. Hinges operate on field adjustable, gravity activated cams that can be set in 30-degree increments. Emergency access is accomplished by lifting the door from the bottom.

Door Strike and Keeper: Shall be 6" and fabricated from heavy-duty extruded aluminum alloy with brushed finish. Wrap-around flanges are mounted and thru-bolted to pilaster with stainless steel tamper resistant barrel nuts and shoulder screws.

Latch: Anodized extruded aluminum, with housing, slide bolt and button. Latch at accessible compartments shall be sliding type only.

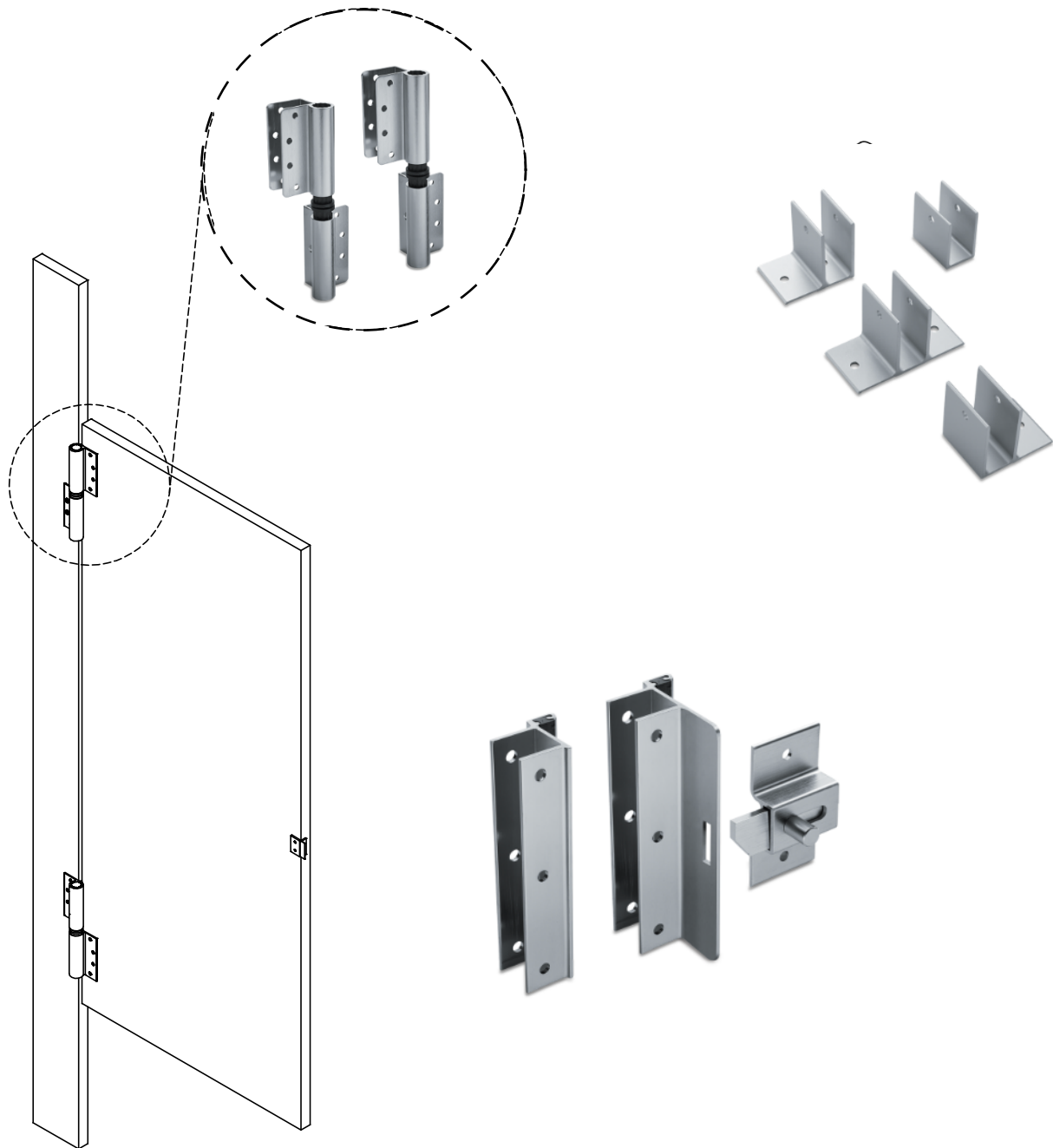
**2.05 Mounting Hardware** – Brackets shall be extruded aluminum stirrup brackets. Brackets shall be thru-bolted to the panels with tamper resistant barrel nuts and shoulder screws.

**2.06 Construction Design**- Partitions shall be anchored to the floor by a 1-piece, 3" high, stainless steel anchor trim with bottom plate through which concrete anchors are driven into the floor. Pilaster is leveled with machine screw threaded into an insert in bottom of pilaster and is fastened to anchor trim with tamper resistant stainless fasteners. Headrail with anti-grip profile shall provide overhead bracing and span all compartments and brace the end pilaster to the back wall.

##### Part 3 Execution

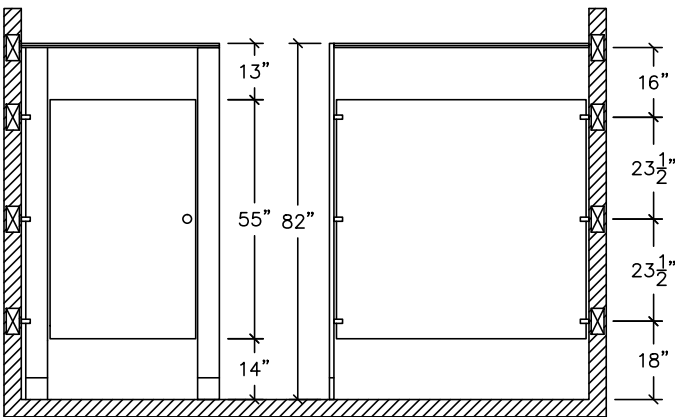
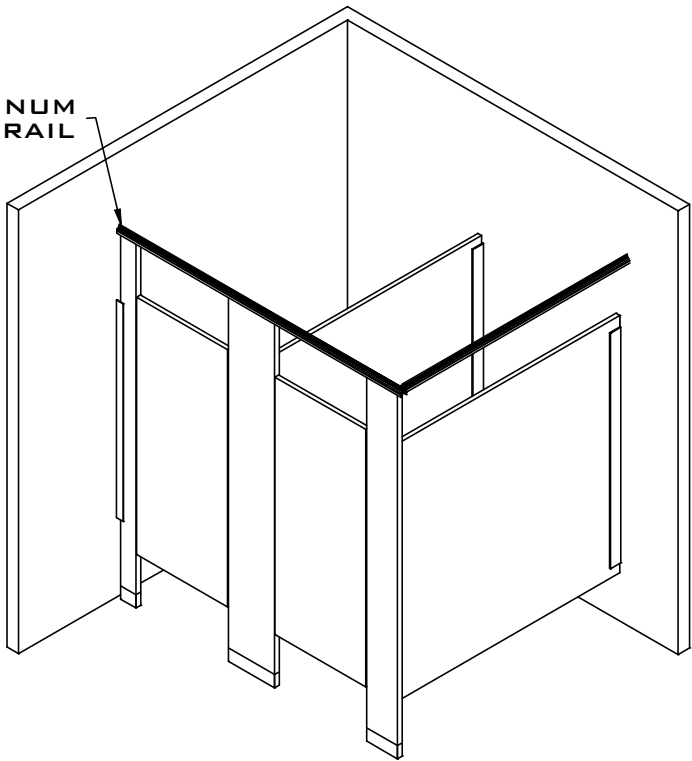
**3.01 Installation** – Shall be installed in accordance to the **ASI Accurate's** installation instructions with partitions rigid, straight and plumb. Doors and panels shall be mounted 14" above the finished floor.

**3.02 Warranty** – **ASI Accurate Partitions** guarantees its solid plastic HDPE material against breakage, corrosion, and delamination for 25 YEARS from the date of receipt by the customer. If material is found defective during that period, the material shall be replaced free of charge. No credits or allowances shall be issued for any labor or expenses relating to the replacement of components covered under the warranty plan.

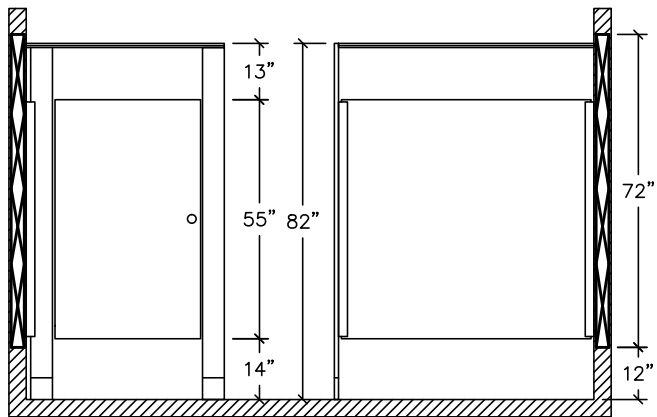




ALUMINUM HEADRAIL



FRONT & SIDE ELEVATION  
STIRRUP  
BRACKETS



FRONT & SIDE ELEVATION  
CONTINUOUS  
BRACKETS

 BLOCKING IN WALL BY OTHERS

REV 12/1

# Solid Plastic (HDPE) Color Selection Guide



White  
9201



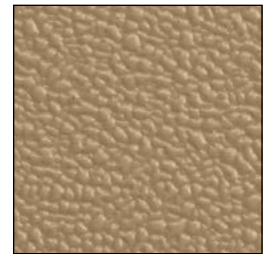
Cream  
9235



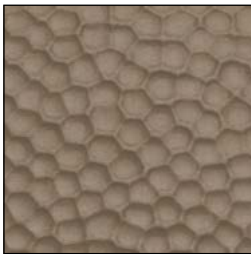
Ivory Essence  
Speckle 9500\*



Caramel  
9658



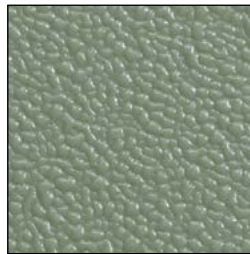
Mocha  
9212



Metallic Bronze  
9513



Olive  
9223



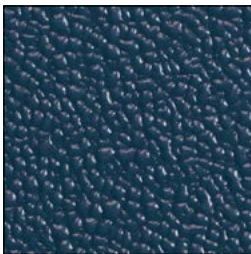
Moss  
9233



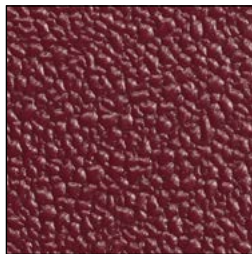
Hunter Green  
9508



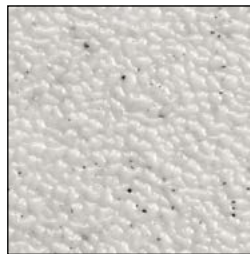
Azure  
9231



Blue  
9509



Burgundy  
9211



Folkstone Gray  
9400\*



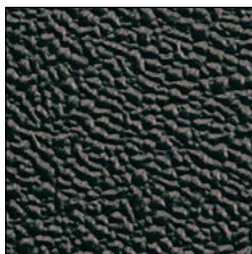
Gray  
9200



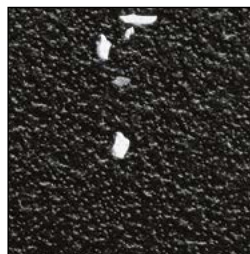
Metallic Silver  
9511



Charcoal  
9237



Black  
9205



Black Confetti  
9217\*



Brown Bark  
8101\*



Gray Bark  
8100\*