

Quote #17027325-1

Date: 11/10/2023

- ✓ Standard Freight Included: 78028 Zip Code
- ✓ All Hardware and Anchors Included
- ✓ Doors, Dividers, Pilasters Included



Powder Coat

3 year warranty

Delivered in 3-6 business days (Quick Ship colors only);
Standard colors in 12-18 business days

\$3,668.07

Price includes materials and hardware

[Product Info](#) | [Color Chart](#)



Plastic Laminate

2 year warranty

Delivered in 5-10 business days

\$5,044.11

Price includes materials and hardware

[Product Info](#) | [Color Chart](#)



Solid Plastic

25 year warranty

Delivered in 18-22 business days

\$6,539.67

Price includes materials and hardware

[Product Info](#) | [Color Chart](#)



Stainless Steel

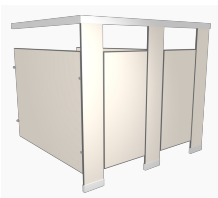
5 year warranty

Delivered in 3-6 business days

\$6,929.93

Price includes materials and hardware

[Product Info](#) | [Color Chart](#)



Phenolic

25 year warranty

Delivered in 6-10 business days

\$7,788.36

Price includes materials and hardware

[Product Info](#) | [Color Chart](#)



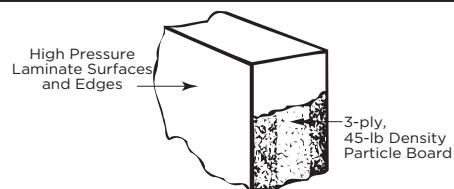
ClassicSeries®

High Pressure Laminate Partitions and Screens

1540 SERIES

- ☐ Toilet Partitions
- ☐ With Outswing Door
- ☐ Urinal Screens

- ☐ 1541 Series Floor-Anchored
- ☒ 1542 Series Overhead-Braced
- ☐ 1545 Series Wall-Hung Urinal Screens
- ☐ 1548 Series Ceiling-Hung for 8' (244cm) Ceiling or as required up to 10' (308cm) Ceiling.



Stiles: For compartments – 3", 4", 5", 6", 7", 8", 9", 10", 12", 16", 18", 20", or 24" (8, 10, 13, 15, 18, 20, 25, 30, 41, 46, 51, or 61cm) wide; for screens – 6" (15cm) wide. *Floor-anchored* – 69" (175cm) high; *overhead braced* – 82-5/16" (209cm) high; *ceiling-hung* – 83" (211cm) high for 8' (244cm) ceilings or as required up to 10' (305cm) ceilings.

Wall Posts: 1-1/2" wide, 58" high (4 x 147cm).

Panels: For Compartments - Up to 84" (213cm) wide; 58" (147cm) high. For wall-hung screens - 42" or 48" (107 or 122cm) high; 18" or 24" wide (46 or 61cm). For ceiling-hung and floor-anchored screens - 58" (147 cm) high; 24", 36", 48", or 60" (61, 91, 122, or 152cm) wide.

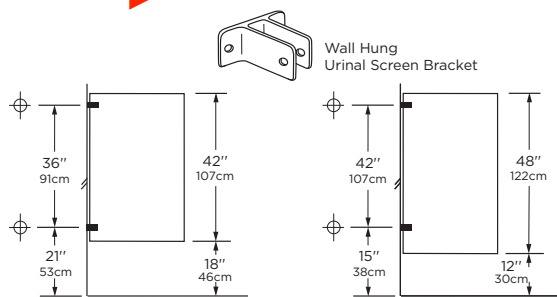
^a Minimum 8" (20cm) wide stile recommended for ceiling-hung and flooranchored compartments.

^b Use outswing doors to comply with local codes requiring access for physically disabled persons.

~~15-11 Series Floor Anchored~~

1542 Series Overhead-Braced

1548 Series Ceiling-Hung



1545 Series Wall-Hung 42" or 48" Urinal Screen

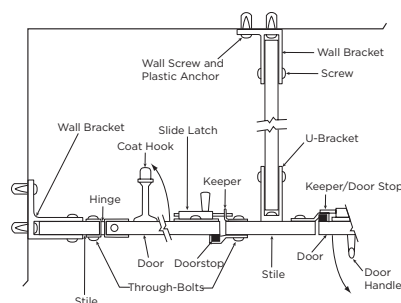
⊕ These mounting points require wall backing. For suggested backing methods, Bobrick Advisory Bulletins TB-32 for ceiling-hung installations and TB-46 for floor-anchored are available upon request.

► TYPICAL HARDWARE DETAILS

Standard gaps are provided at all walls and between components to allow for hardware attachment.

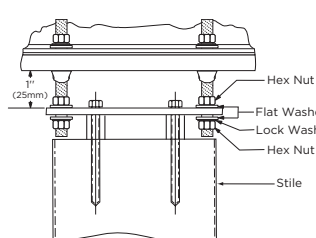
Wall gaps are standard 1/2" to 1"

**Through-Bolted, Bright-Polished,
Chrome-Plated Zamak (standard on all
compartments)**

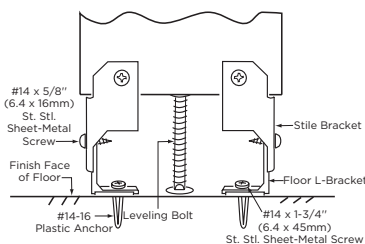


TYPICAL INSTALLATION DETAILS

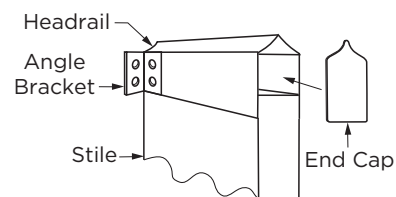
Floor-Anchored or Ceiling-Hung Leveling Device
(Ceiling Leveling Device Shown)



Overhead-Braced Floor Leveling Device



Overhead-Bracing



The illustrations and descriptions herein are applicable to production as of the date of this Technical Data Sheet.
The manufacturer reserves the right to, and does from time to time, make changes and improvements in designs and dimensions.

1540 Revised 7/26/22.
© 2022 by Bobrick Washroom Equipment, Inc.

MATERIALS:

Stiles — 1" (25mm) finished thickness: 3-ply, 45-lb (20.4-kg) density, resin-impregnated particle board; surfaces and edges are .050" (1.3mm) thick, high-pressure plastic laminate with colored face sheets and matte finish.

Leveling Device — Overhead-Braced Series: 12-gauge (2.8mm), 3" x 1-1/4" (75 x 32mm) plated steel stile bracket factory installed to bottom of stile. Furnished with leveling bolt, shoe retainer, floor L-bracket, plastic anchor #14-16, #14 x 5/8" (M6.3 x 16mm) stainless steel sheet-metal screws and #14 x 1-3/4" (M6.3 x 45mm) stainless steel sheet-metal floor screws.

Leveling Device — Floor-Anchored or Ceiling-Hung: 3/8" x 1" (10 x 25mm) steel bar, zinc-chromate plated, bolted to stile using 6" x 3/8" (152 x 10mm) diameter carbon steel lag bolt. Furnished with 3/8" (10mm) diameter threaded rods, hex nuts, washers, spacer sleeve (ceiling-hung only), expansion shield and shoe retainer.

Shoe: — 18-8, Type-304, 22-gauge (0.8mm) stainless steel with satin finish; 4" (102mm) high. Patented one-piece shoe is open-ended, and may be mounted blind against wall using shoe clip fastener on wall side.

Panels and Doors — 1" (25mm) finished thickness: 3-ply, 45-lb (20.4-kg) density, resin-impregnated particle board; surfaces and edges are .050" (1.3mm) thick, high-pressure plastic laminate with colored face sheets and matte finish.

Headrail: (1542 Series Only): Extruded anodized aluminum. Enclosed construction with vandal-resistant sloping top.

Wallpost: 1-1/2" (38mm) x 1" (25mm) x 58" (147cm), 16 gauge (1.6mm) thick, 18-8, Type-304 stainless steel. Pre-drilled for door mounting hardware.

Door and Mounting Hardware — Hinges, door latches, door keepers, coat hooks, and mounting brackets are constructed of chrome-plated zamak. Toilet compartment door is locked from inside by sliding door latch into keeper. A locked compartment may be opened from outside by lifting door to disengage latch from keeper. Doorstop prevents inswing door from swinging out beyond stile; on outswing door, the doorstop/keeper prevents it from swinging in beyond stile. Combination coat hook and bumper reduces damage from door inside compartment.

INSTALLATION:

Bobrick installation instructions are packed with each shipment and are available also in advance on request.

Notes:

1. Where water from showers or hose-down cleaning comes in contact with partitions, Bobrick 1080 Series water-resistant, solid phenolic partitions are recommended.
2. Ceiling-hung partitions require structural members (not furnished by Bobrick) in ceiling. For suggested types of ceiling support systems, see Bobrick Advisory Bulletin TB-32.
3. Wall backing is required to secure the mounting brackets of panels, stiles, and wall posts. For suggested wall backing, see Bobrick Advisory Bulletin TB-46.
4. Floor-anchored stiles are furnished with expansion anchors and threaded rods. The expansion anchors require minimum 2" (50mm) penetration into minimum 3" (75mm) thick structural concrete.
5. Bobrick stainless steel partition-mounted washroom accessories are available for mounting in panels between two compartments. See current Bobrick Catalog for description of accessories. Cutouts in panels can be pre-cut for Bobrick models at factory if location and size of all cutouts and Bobrick model numbers are furnished at time of order.

GUARANTEE:

The Bobrick toilet partition panels, doors and stiles are warranted for a period of 2 years against breakage, corrosion, delaminating and defects in workmanship from the date of purchase for the periods set forth (this limited warranty is conditioned on the toilet partitions being properly installed, used and serviced). Spraying down or hosing HPL partitions voids warranty. Any products returned to Bobrick under this guarantee will be repaired or replaced at no charge.

SPECIFICATION:

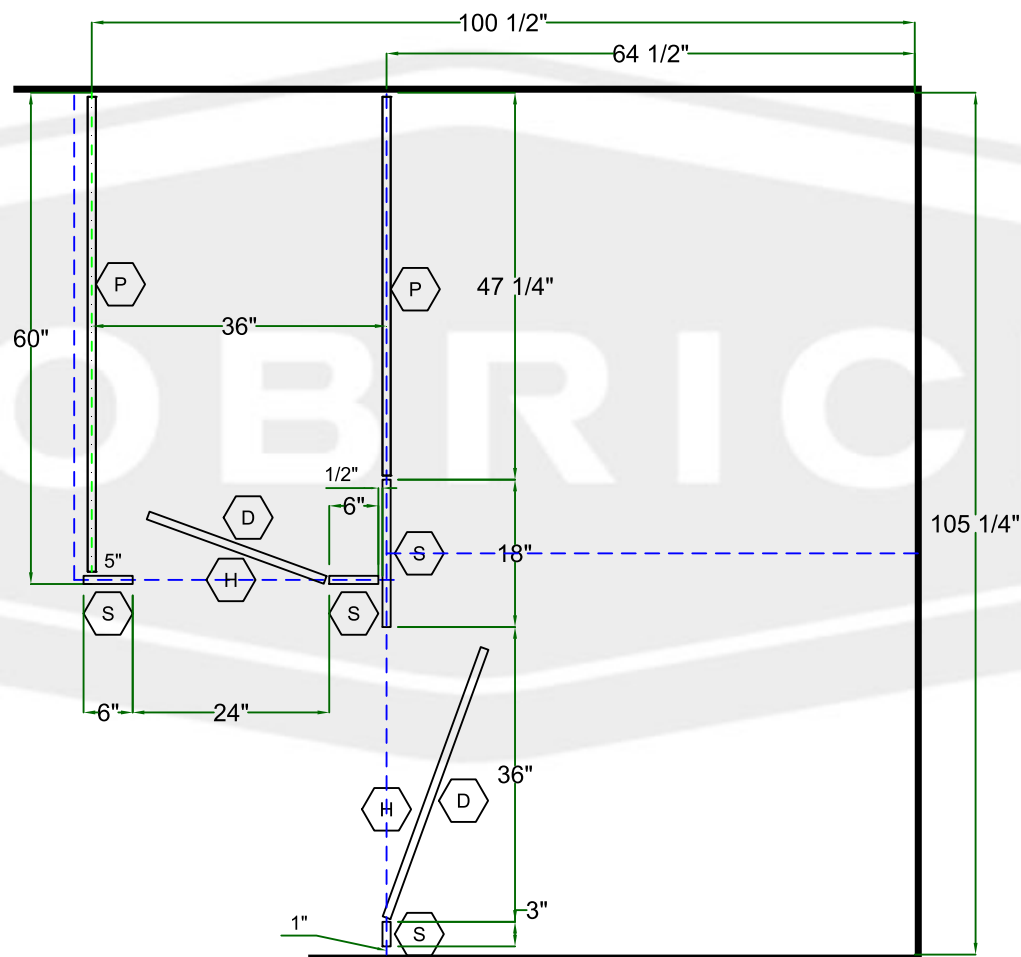
High pressure laminate _____ (insert one: toilet partitions or urinal screens) shall be _____ (insert one: floor-anchored, ceiling-hung, overhead-braced or wall-hung). Stiles, panels, and doors shall have a finished thickness of 1" (25mm). Core of panels, doors, and stiles* shall be 3-ply, 45-lb (20.4-kg) density, resin-impregnated particle board. Stiles shall have a one-piece, Type-304, satin-finish stainless steel shoe that is 4" (102mm) high. Surfaces and edges shall be .050" (1.3mm) thick, high pressure laminate with colored face sheets and matte finish; bonding shall be done using adhesives especially formulated to prevent delamination from moisture and heat normally existing in public washrooms. Stiles, panels, and doors shall be _____ (insert color name and number from current Bobrick Catalog). Headrails for overhead-braced compartments shall be anodized aluminum with satin finish. All door hardware and mounting brackets shall be chrome-plated zamak**. Theft-resistant, one-way screws shall be furnished for all door hardware. Plated-steel Phillips screws shall be furnished for all mounting brackets. A coat hook shall be furnished for each door.

_____ (insert one: Toilet Partitions, Dressing Compartments, Urinal Screens) shall be _____ Series (insert series number) of Bobrick Washroom Equipment, Inc., Clifton Park, New York; Jackson, Tennessee; Los Angeles, California; Bobrick Washroom Equipment Company, Scarborough, Ontario; Bobrick Washroom Equipment Pty. Ltd., Australia; and Bobrick Washroom Equipment Limited, United Kingdom.

HEIGHT	COLOR SELECTION	DISTRIBUTOR	35205 - FRY SPECIALTY INC	Note: Dimensions are in inches
PANEL 58	8906-58-Danish Maple	QUOTE#/S.O.#	3909108-1	
STILE 81 15/16	8906-58-Danish Maple	P.O.#		
DOOR 58	8906-58-Danish Maple	DATE	11/10/2023	
		JOB NAME	Cooper Construction	
		ROOM	Mens	

Toilet partition and urinal screen layout drawings are the sole, confidential and proprietary property of Bobrick Washroom Equipment, Inc. The layout drawings are custom designed and prepared exclusively for the quotation and manufacture of Bobrick toilet partitions and urinal screens for the distributor and job name stated on the layout. Reproduction or distribution of the layout drawings to other toilet partition manufacturers or other persons without the prior written permission of Bobrick Washroom Equipment is strictly prohibited.

FLOOR CLEARANCE 12



MAKE 1 UNITS THUS

1. O.A.=OVERALL GAP: 3/4\" FROM WALL TO PANEL
PLUS 1/4\" PANEL TO STILE
NOTES FOR INSTALLER: UNLESS OTHERWISE SPECIFIED

S STILE
 W WALLPOST
 D DOOR
 P PANEL
 H HEADRAIL
 B BENCH

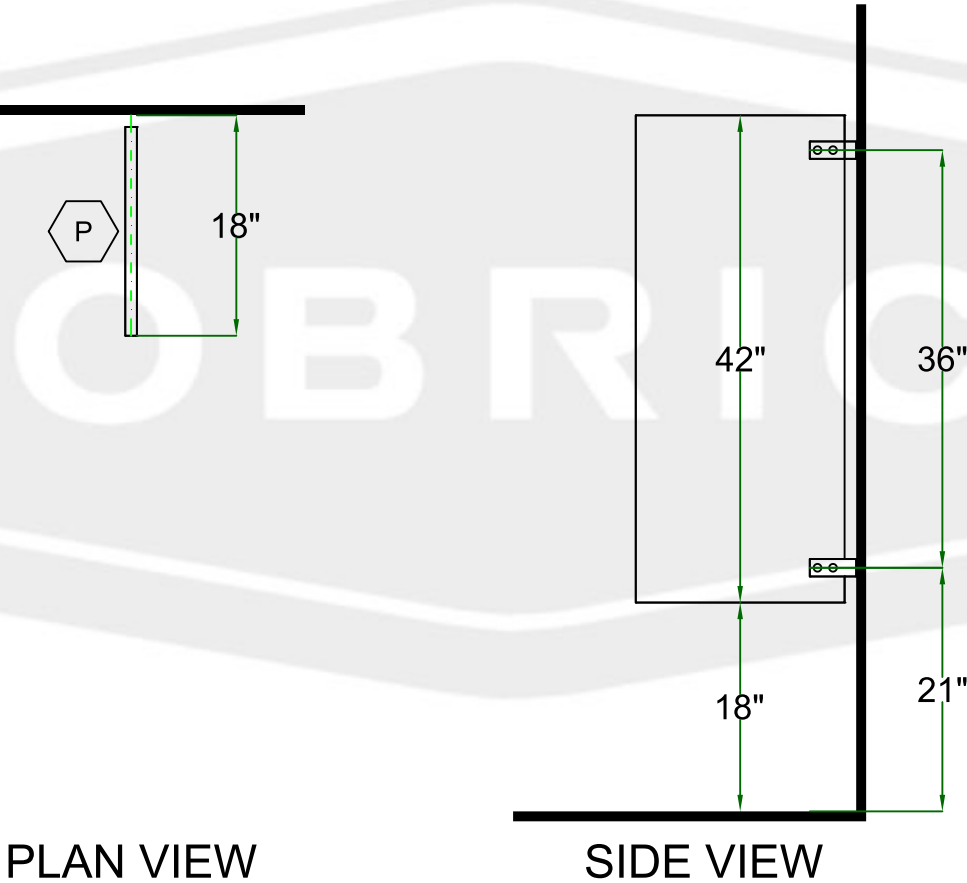
EACH DRAWING MUST BE SIGNED APPROVED BEFORE FABRICATION CAN BEGIN. FABRICATION WILL BE FROM FINAL APPROVED DRAWINGS ONLY. PLEASE REVIEW CAREFULLY BEFORE SIGNING APPROVED.

APPROVED _____

COLOR SELECTION 8906-58-Danish Maple 8906-58-Danish Maple 8906-58-Danish Maple	DISTRIBUTOR 35205 - FRY SPECIALTY INC				Note: Dimensions are in inches
	QUOTE#/S.O.# 3909108-1				
	P.O.#		JOB NAME	Cooper Construction	
	DATE 11/10/2023		ROOM	Mens	

Toilet partition and urinal screen layout drawings are the sole, confidential and proprietary property of Bobrick Washroom Equipment, Inc. The layout drawings are custom designed and prepared exclusively for the quotation and manufacture of Bobrick toilet partitions and urinal screens for the distributor and job name stated on the layout. Reproduction or distribution of the layout drawings to other toilet partition manufacturers or other persons without the prior written permission of Bobrick Washroom Equipment is strictly prohibited.

FLOOR CLEARANCE 18



1. O.A.=OVERALL GAP, 1/2" FROM WALL TO PANEL
PLUS 1/4" PANEL TO STILE
NOTES FOR INSTALLER: UNLESS OTHERWISE SPECIFIED

S STILE W WALLPOST D DOOR P PANEL H HEADRAIL B BENCH

MAKE 2 UNITS THUS

EACH DRAWING MUST BE SIGNED APPROVED BEFORE FABRICATION CAN BEGIN. FABRICATION WILL BE FROM FINAL APPROVED DRAWINGS ONLY. PLEASE REVIEW CAREFULLY BEFORE SIGNING APPROVED.

APPROVED _____

HEIGHT
PANEL 58
STILE 81 15/16
DOOR 58

COLOR SELECTION
8906-58-Danish Maple
8906-58-Danish Maple
8906-58-Danish Maple

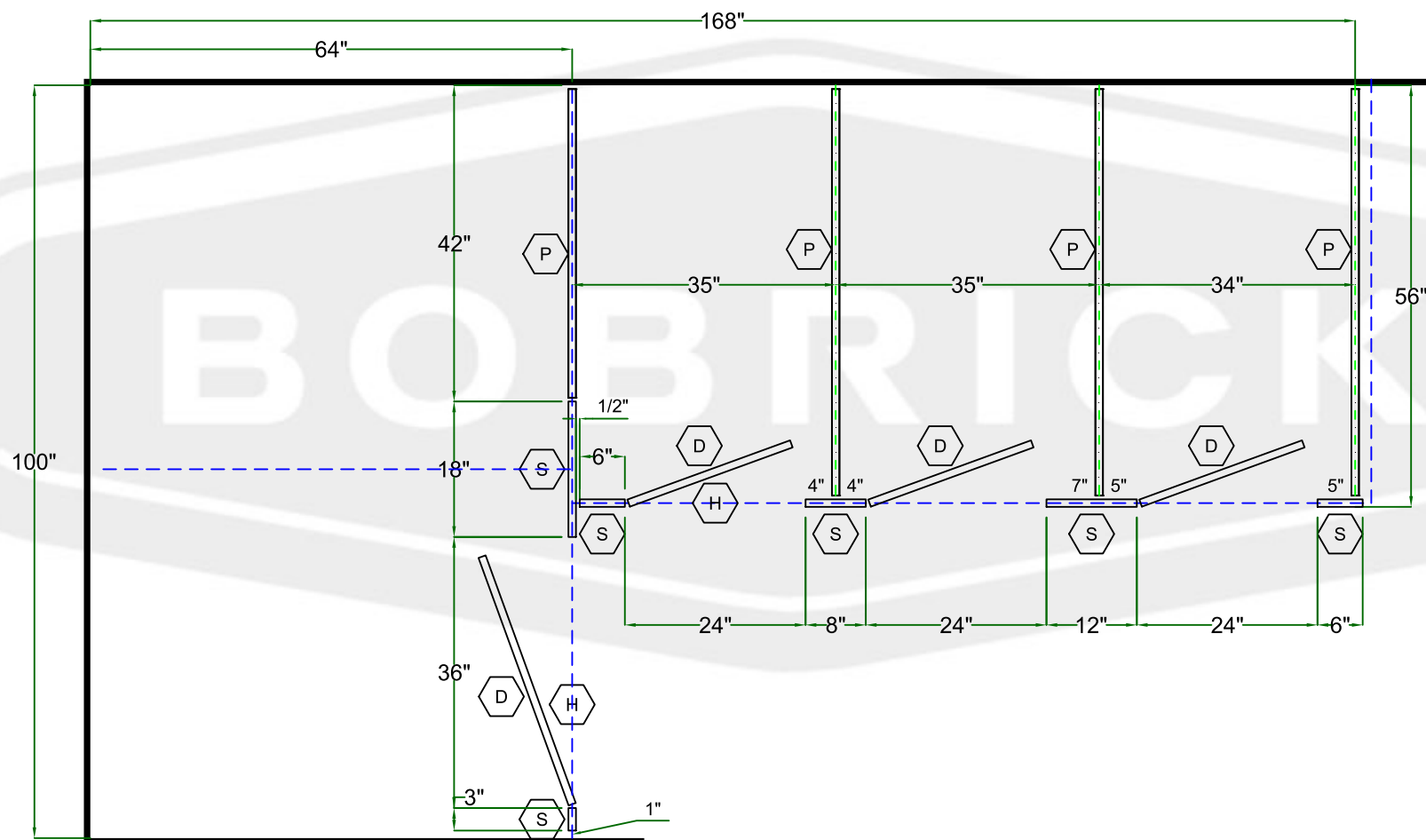
DISTRIBUTOR 35205 - FRY SPECIALTY INC
QUOTE#/S.O.# 3909108-1
P.O.#
DATE 11/10/2023

JOB NAME Cooper Construction
ROOM Womens

Note: Dimensions are in inches

Toilet partition and urinal screen layout drawings are the sole, confidential and proprietary property of Bobrick Washroom Equipment, Inc. The layout drawings are custom designed and prepared exclusively for the quotation and manufacture of Bobrick toilet partitions and urinal screens for the distributor and job name stated on the layout. Reproduction or distribution of the layout drawings to other toilet partition manufacturers or other persons without the prior written permission of Bobrick Washroom Equipment is strictly prohibited.

FLOOR CLEARANCE 12



MAKE 1 UNITS THUS

1. O.A.=OVERALL GAP: 3/4" FROM WALL TO PANEL
PLUS 1/4" PANEL TO STILE
NOTES FOR INSTALLER: UNLESS OTHERWISE SPECIFIED

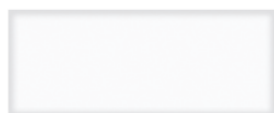
(S) STILE (W) WALLPOST (D) DOOR (P) PANEL (H) HEADRAIL (B) BENCH

EACH DRAWING MUST BE SIGNED APPROVED BEFORE FABRICATION CAN BEGIN. FABRICATION WILL BE FROM FINAL APPROVED DRAWINGS ONLY. PLEASE REVIEW CAREFULLY BEFORE SIGNING APPROVED.

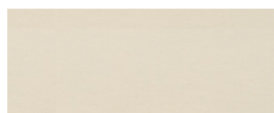
APPROVED _____



HIGH PRESSURE LAMINATE (HPL) STANDARD COLORS & PATTERNS



Designer White
D354-60



Natural Almond
D30-60



Beige
1530-60



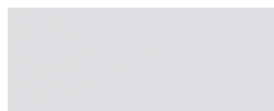
Otter
3202-58



Shadow
D96-60



Slate Grey
D91-60



Moonstone
7872-58



Grey
1500-60



Platinum
D315-60



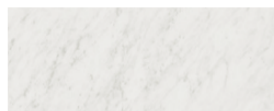
Mouse
928-58



Terril
2297-58



Black
1595-60



White Carrara
4924-38



Neutral Weft
5875-58



Flax Gauze
7708-58



Desert Zephyr
4841-60



Cardboard Solidz
7813-58



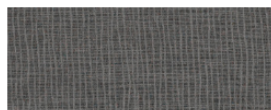
Pewter Mesh
4878-38



Sheer Mesh
4876-38



Classic Linen
4943-38



Citadel Warp
5882-58



Silver Galaxy Slate
9528-58



White Ash
8841-58



Danish Maple
8906-58



Millennium Oak
5887-58



Bleached Legno
8845-58



Smoky Brown Pear
5488-58



Blackened Steel
8918-58