



# AMERICAN SPECIALTIES, INC.

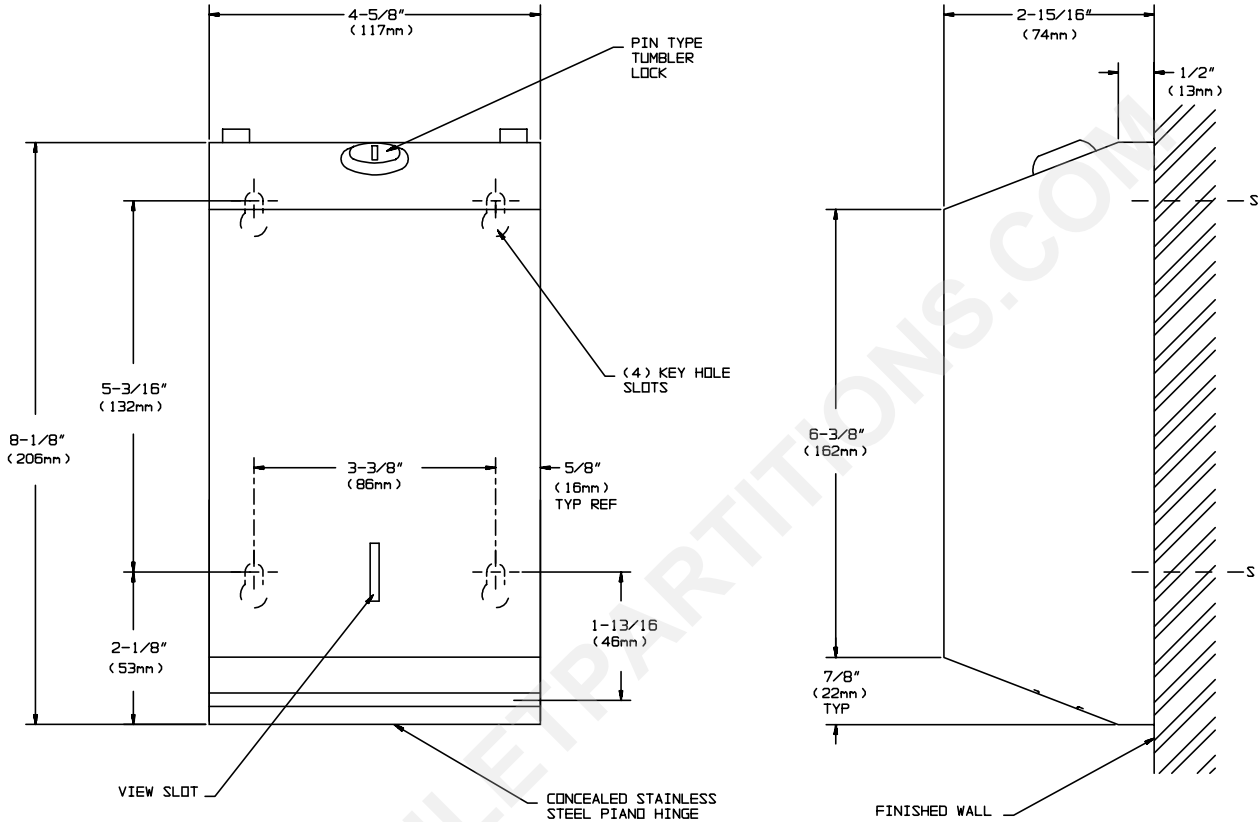
441 Saw Mill River Road, Yonkers, NY 10701 (914) 476-9000

MODEL No: 0262

ISSUED: 1-87

REVISED: 8-04

## SURFACE MOUNTED TOILET TISSUE DISPENSER



### SPECIFICATION

Surface Mounted Toilet Tissue Dispenser shall hold and dispense 1300 standard double-fold or single-fold tissues and shall have door and cabinet fabricated of alloy 18-8 stainless steel, type 304, 22 gauge. Tissue dispensing slot shall have a fully deburred and rolled-in edge for snag-free dispensing and user safety. Door shall be attached to cabinet at bottom with a full length 3/16" dia. (5mm) stainless steel multi-staked piano hinge. Structural assembly of body and door components shall be of welded construction. Door shall be provided with a refill view indicator and be held closed with a tumbler lock keyed alike to other ASI Washroom Equipment. All exposed surfaces shall be N° 4 satin finish and be protected during shipment with a PVC film easily removable after installation. Unit shall protect wall against accidental door drop damage by self-limiting body hinge construction. Dispenser shall enjoy simplified installation by hanging on pre-installed screw pattern (by others).

**Surface Mounted Toilet Tissue Dispenser shall be Model N° 0262 as manufactured by American Specialties, Inc. 441 Saw Mill River Road Yonkers, New York 10701-4913**

### INSTALLATION

Unit is surface mounted on wall or partition using N° 10 self tapping screws (by others) through "keyhole" slots mounting holes in back for ease in hanging unit on pre-installed screws. For compliance with ADA Accessibility Guidelines, unit should be installed so that tissue dispenser slot is between 44" (1118mm) maximum above finished floor (AFF) and 19" (483mm) minimum AFF.

### OPERATION

Tissues are self-feeding on user-pull demand until supply is depleted. Unit may be reloaded with a partial load in-place and will continue to feed properly. Low level of tissue supply is indicated from 25% capacity to approximately 5% level.

Accessory Specialties

AMERICAN DISPENSER

Desert Ray Products

WATROUS .INC.