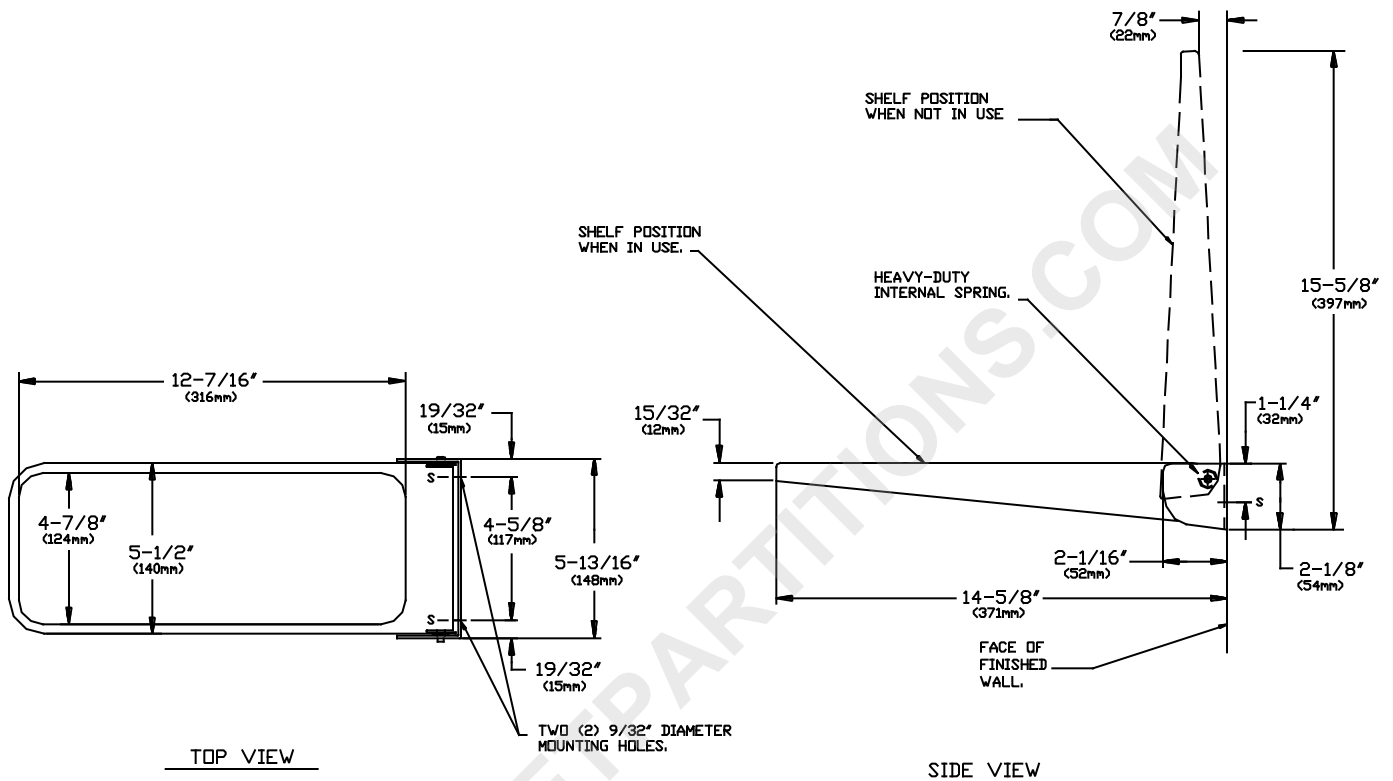




AMERICAN SPECIALTIES, INC.
441 Saw Mill River Road, Yonkers, NY 10701 (914) 476-9000

MODEL No:	0698
ISSUED:	1-87
REVISED:	10-99

FOLDING UTILITY SHELF



SPECIFICATION

Folding Utility Shelf shall have self-contained mounting bracket and shall be fabricated of seamless alloy 18-8 stainless steel, type 304, N^o18 gauge. Top surface of shelf shall have raised rim to prevent objects from slipping off shelf. All exposed surfaces shall be N^o4 satin finish and be protected during shipment with a PVC film easily removable after installation. Structural reinforcement shall be of welded construction. All exposed edges and corners shall be radiused and deburred. Internal spring counterbalance shall be captive and suitable for heavy duty service. Shelf shall automatically return to vertical storage position when not in use.

Folding Utility Shelf shall be Model N^o 0698 as fabricated by American Specialties, Inc. 441 Saw Mill River Road, Yonkers, New York, 10701-4913

INSTALLATION

Unit is surface mounted. Secure unit to wall or toilet partition with hardware supplied by installer to match installation type. Ensure that mounting configuration complies with local building codes.

MATERIALS

Shelf: 18-8, type 304, N^o 18 gauge (.048 in. <1.22mm> thick) stainless steel. Unitized all welded construction. Exposed surfaces have satin finish. Edges and corners are radiused and burr free.

Brkt: 18-8, type 304, N^o 14 gauge (.075 in. <1.91mm> thick) stainless steel. Exposed surfaces have satin finish. Edges and corners are radiused and burr free.

OPERATION

Shelf is manually lowered and retained in operating position by placing a weight such as a pocketbook or small package upon shelf. Shelf automatically returns to vertical storage position when unloaded.

Accessory Specialties

AMERICAN DISPENSER

Desert Ray Products

WATROUS INC.