



AMERICAN SPECIALTIES, INC.

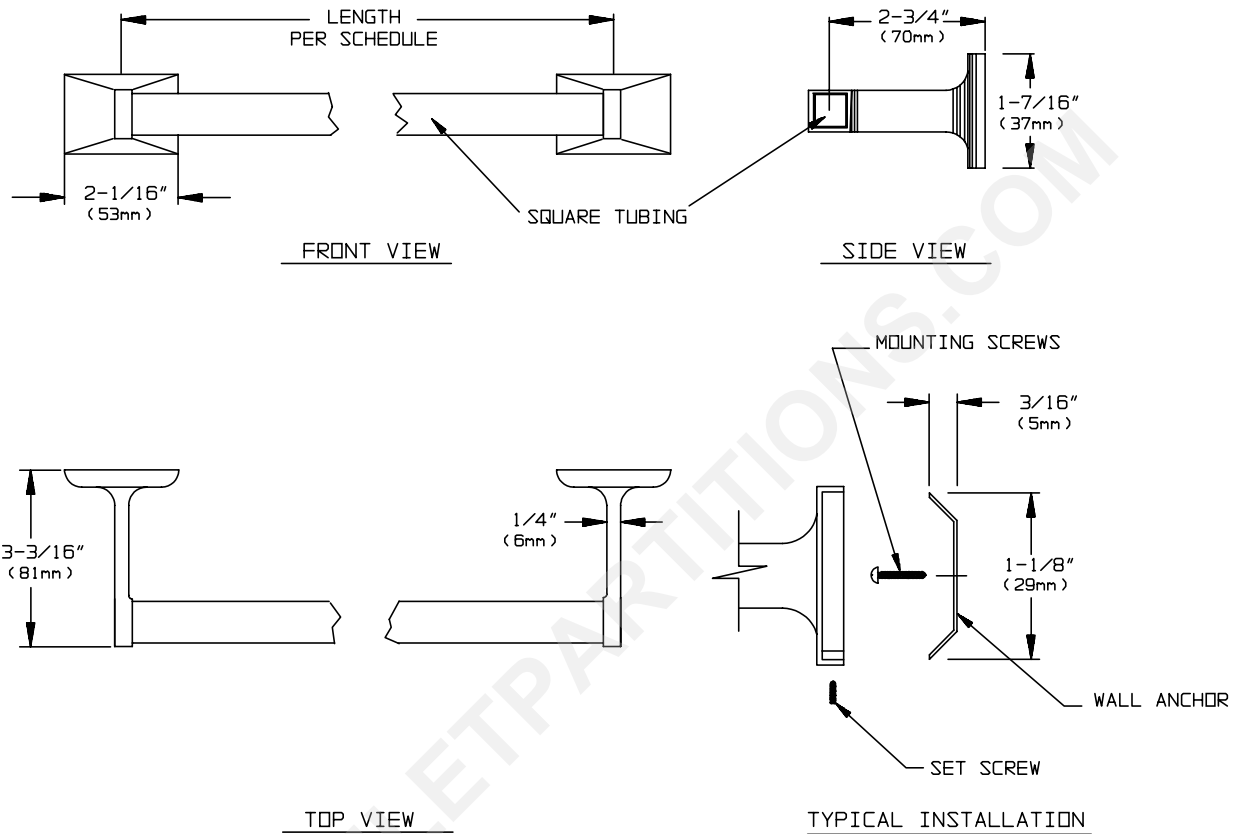
441 Saw Mill River Road, Yonkers, NY 10701 (914) 476-9000
www.americanspecialties.com

MODEL No: 0760-Z

ISSUED: 1-87

REVISED: 8-05

SQUARE TOWEL BAR



SCHEDULE OF AVAILABILITY			
Model N ^o	Length	Model N ^o	Length
0760-Z18	18" (457mm)	0760-Z30	30" (762mm)
0760-Z24	24" (610mm)		

SPECIFICATION

Square Towel Bar shall have brackets fabricated of triple chrome plated rust proof Zamak. Bar shall be 3/4" (19mm) square 21 gauge (.032 in. <.81mm> wall) triple chrome plated steel tubing. Unit shall be mounted by two end brackets. Tapped holes in bracket flange base shall have tamper resistant stainless steel hex socket set screws to lock brackets to concealed pre-mounted wall plates. Unit shall meet FHA and other Federal Specifications.

Square Towel Bar shall be Model N^o 0760-Z18 (or 0760-Z24 or 0760-Z30) of American Specialties, Inc., 441 Saw Mill River Road Yonkers, New York 10701-4913.

INSTALLATION

For general utility, mount bar 50" (1270mm) above finished floor (AFF) from center line of towel bar. Locate wall brackets in appropriate positions and secure wall plates with two (2) self-tapping screws (by others) through two slot holes in wall plates. Install brackets over wall plates and fasten in place with stainless steel set screws through tapped holes in brackets.