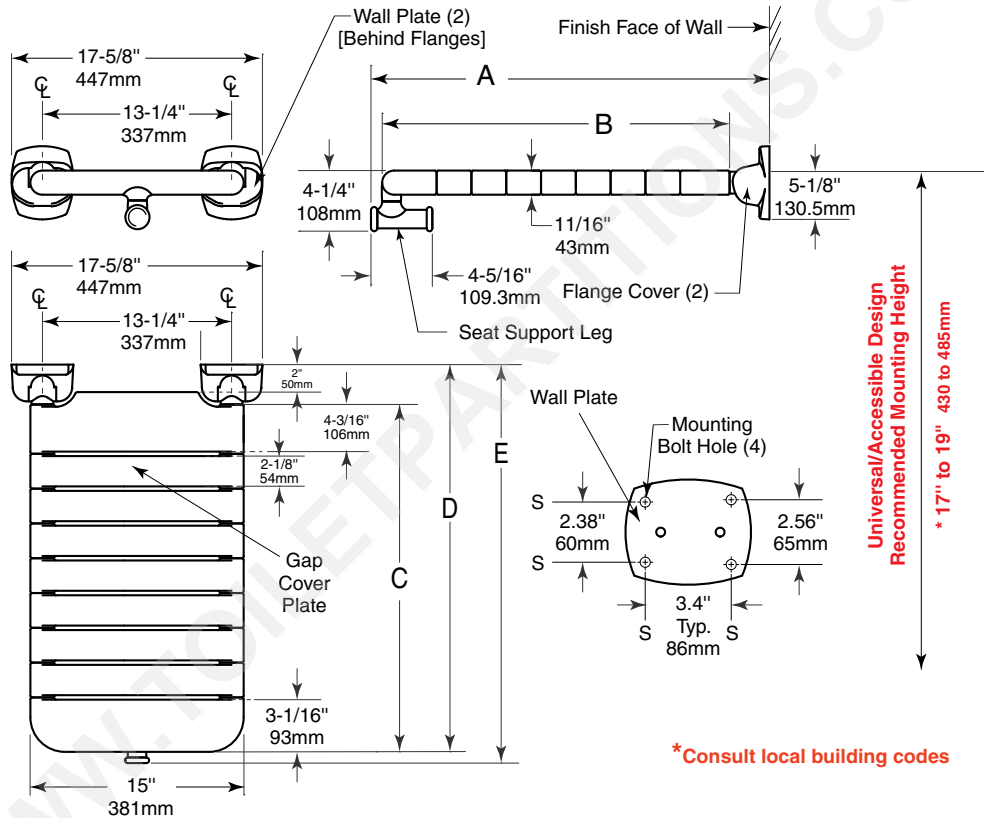




Technical Data

**VINYL-COATED
FOLDING BATHTUB SEAT**

**B-518116
SERIES**



*Consult local building codes

STANDARD SIZES

Model No.	Length A	Length B	Length C	Length D	Length E
B-518116 x 28	27-15/16" 710mm	25-1/4" 641mm	24-3/8" 619mm	27-3/16" 690mm	27-15/16" 710mm
B-518116 x 32	32-13/16" 834mm	29-1/4" 743mm	29-1/4" 743mm	32-1/16" 814mm	32-13/16" 834mm

MATERIALS:

Seat — Seat is constructed of polyamide 6 nylon with glossy finish.

Frame — Zinc-plated 3/4" (19mm) diameter steel pipe 1/10" (2.5mm) wall thickness. 1/8" (3mm) thick W1 white vinyl antibacterial, biocompatible, and warm-to-the-touch coating thickness; 1-5/16" (33mm) outside diameter.

Wall Plate and Mounting Flange Cover — Wall plate Type 304, thickness 1/8" (3mm) stainless steel. Mounting Flange Cover polyamide 6 nylon with glossy finish.

Bracket — Zinc-plated 3/4" (19mm) steel tubing with vinyl antibacterial, biocompatible, and warm-to-the-touch coating thickness.

continued . . .

OPERATION:

Folding In-Tub Bathtub Seat is used to sit on while showering. Seat folds up against wall when not in use. The Flanges hold Seat in upright position until released by pulling the top of the Seat away from the wall. Seat requires one hand operation to manually lower to horizontal position for use or to raise for departure and arrival. Fiberglass reinforced nylon slats permit water to drain, will not support growth of bacteria. Seat, when lowered to horizontal position is supported by leg on tub rim. When properly installed Seat will support loads up to 451 lbs., (204 kg) complying with accessible design guidelines (including ADAAG in the U.S.A.).

INSTALLATION:

Remove black plastic Wall Plates from rear of Flanges using a flat-blade screwdriver. Provide concealed anchor device(s) or backing as specified or required in accordance with local building codes before wall is finished. Folding Bathtub Seat is to be mounted so that it will be horizontal and level when in the down position with the Seat Support Leg at the lower side of the end of the Seat resting on one side of the bathtub. Once desired mounting location is determined, pull back white plastic Flange Covers from both Seat Flanges and use Flanges of Folding Seat as a template to mark locations of mounting bolts on finished wall, as necessary. Make sure Seat is level when marking mounting bolt locations.

Four mounting bolt locations, per Mounting Flange, to be drilled to accept eight 3" (75mm) long 5/16" hex-head lag bolts (furnished).

Mount Folding Seat to wall and concealed anchor device or backing (not furnished). With white plastic Flange Covers pulled away from metal Seat Flanges, securely mount Seat to wall at all four mounting bolt locations in each Flange, with hex-head Lag Bolts, through the Flanges and Wall Plates into wall.

Fold Seat up into the vertical position. Locking nuts at the side of each Flange are to be adjusted to ensure that Seat remains in vertical position when it is rotated up. Snap Flange Covers into place over Flanges and onto Wall Plates. With Seat in horizontal position, snap Gap Cover Plate into place on top of bars in front of Flange Covers.

Optional anchor devices and/or fasteners (not provided) may be used, subject to type of wall on which the grab bar will be mounted, but would also be subject to local building codes for safe Bathtub Seat mounting.

Installation to Wall Secure unit to wall at points indicated by an S, with the two Mounting Flanges located at top and the baseplate and guide bracket below. The bottom of the Support Tube must be positioned within the baseplate and guide bracket before they are secured to wall. Mounting height of Shower Seat must comply with local building codes.

For stud walls, provide concealed backing to comply with local building codes and secure with #14 x 2-1/2" (6.3 x 65mm) stainless steel sheet-metal screws furnished by manufacturer.

For prefabricated shower stalls, provide adequate backing by the shower stall manufacturer. Secure with #14 x 2-1/2" (6.3 x 65mm) stainless steel mounting screws furnished by manufacturer. Bobrick offers a mounting kit for installing shower seats. For additional mounting kits please order 252-30. One mounting kit is required for each Flange.

For masonry walls, provide fiber plugs or expansion shields for use with furnished screws, or provide 1/4" (6mm) toggle bolts or expansion bolts.

SAFETY WARNING: Bath tub seats are no stronger than the anchors and walls to which they are attached and must be firmly secured in order to support the loads for which they are intended. Consult and comply with local building codes. To avoid potential injury, the building owner or maintenance personnel should remove the shower seat from service if the shower seat is not adequately secured to the wall. Unit shall support static loads of up to 451 lbs (204 kg) when properly installed and used. To avoid potential seat malfunction, DO NOT use seat if weight exceeds 451 lbs (204 kg).

CLEANING AND MAINTENANCE:

DO NOT USE abrasive liquid detergents. Chlorine bleach does not improve the aseptic aspect of the equipment and could lead to opacity and deterioration of the material.

DO NOT USE hot air with a temperature over 80°C (175°F) for drying the device.

SPECIFICATION:

Vinyl-coated Folding Bathtub Seat shall have a frame constructed of zinc-plated 3/4" steel pipe 1/10" (2.5mm) wall thickness, 1/8" (3mm) white vinyl antibacterial, biocompatible, and warm-to-the-touch coating thickness, 1-5/16" (33mm) outside diameter. Seat shall be 15" (380 mm) wide, polyamide 6 with glossy finish slats on top and bottom surfaces. Bathtub Seat shall be equipped with two Mounting Flanges constructed of stainless steel Inox Type 304, 1/8" (3mm) thick wall plate with four mounting bolt locations for 3" (75mm) long 5/16" hex-head lag bolts and polyamide 6 flange cover. Seat shall remain in upright position when not in use. Bathtub Seat shall comply with accessible design guidelines (including ADAAG in the U.S.A.).

Vinyl-Coated Folding Bathtub Seat shall be Model _____ (insert model number) of Bobrick Washroom Equipment, Inc., Clifton Park, New York; Jackson, Tennessee; Los Angeles, California; Bobrick Washroom Equipment Company, Scarborough, Ontario; Bobrick Washroom Equipment Pty. Ltd., Australia; and Bobrick Washroom Equipment Limited, United Kingdom.