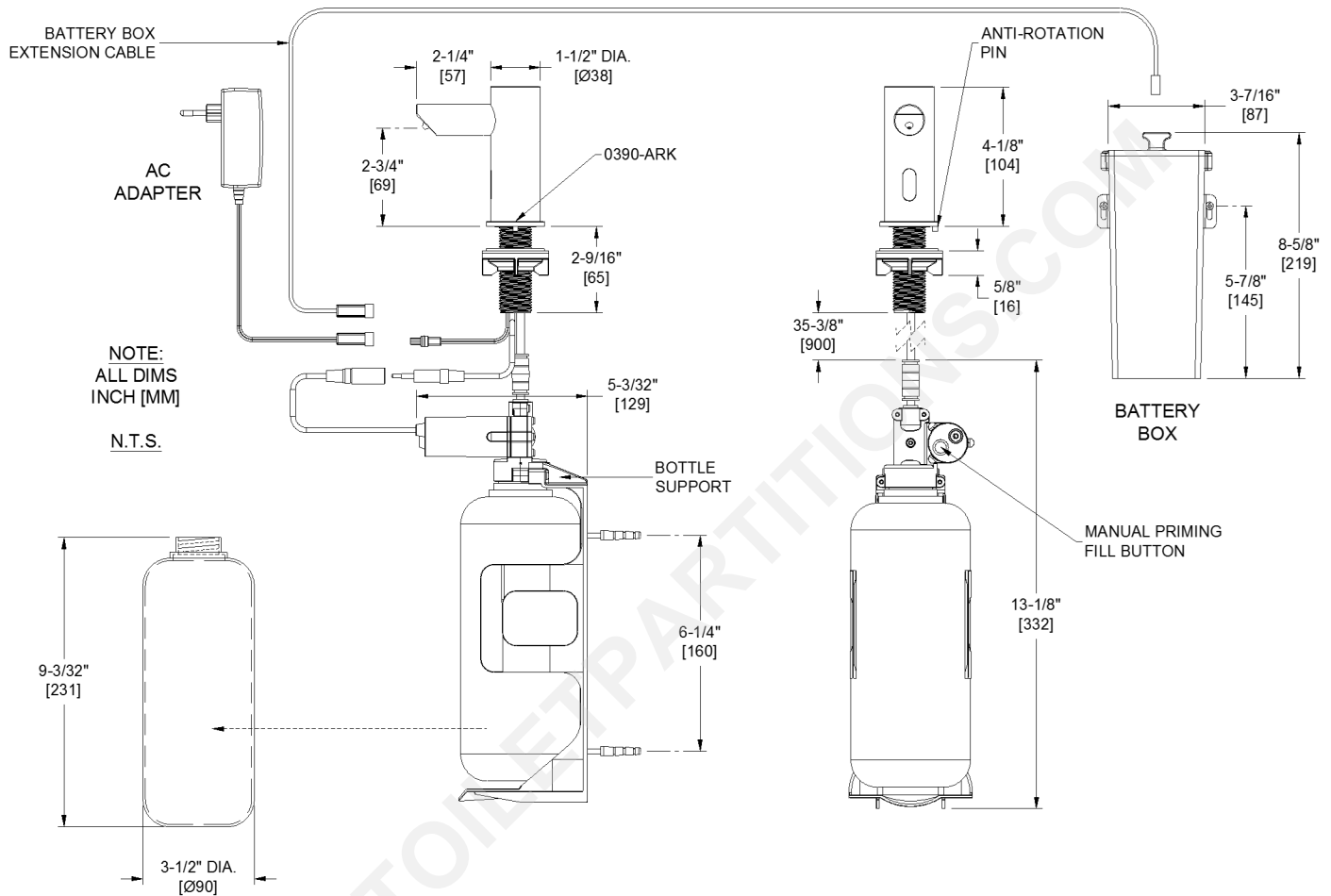




**AMERICAN SPECIALTIES, INC.**  
 441 Saw Mill River Road, Yonkers, NY 10701  
 (914) 476.9000 • (914) 476.0688  
 www.americanspecialties.com

<b>MODEL №:</b>	<b>0391-(n)</b>
<b>ISSUED:</b>	<b>12/13</b>
<b>REVISED:</b>	<b>12 JAN 2017</b>

**EZFill™ VANITY MOUNTED AUTOMATIC SOAP DISPENSER (PAGE 1 OF 2)**



**SPECIFICATION**

EZFill™ Vanity Mounted Automatic Soap Dispenser shall hold 33.8 oz (1 L) of liquid soap within the pH range of 5.5~8.5 and within the viscosity range of 100–3800 cP (mPa•s) in stream cycles with volumes of approximately 0.007 oz (0.2 ml) to 0.08 oz (2.3 ml) in four (4) steps programmable by owner with remote control programming unit {optional, Model 0390-R; supplied one (1) per six (6) pack} with factory preset at approximately 0.03 oz (0.8 ml). Operation is initiated by hands-free sensor controlled by microprocessor digital circuitry and peristaltic pump is powered by six (6) ‘D’-size 1.5V batteries (supplied by others) in a screw-locked IP67 rated compartment (provided) located under counter or an AC Adapter (also IP67 rated, provided, select model) plugged into GFCI outlet (by others). Unit shall have chrome plated spout and sensor housing with a highly polished finish over all exposed surfaces. Unit shall have LED in sensor to indicate function and battery condition. A self-adhesive label shall be provided for use at owner’s option to indicate dispenser function. Tank shall be translucent to show quantity of soap remaining at any time. Tank shall be disengaged and engaged into pump/control housing under counter by manually unscrewing to allow refilling and threading back up into pump/control housing to retain for operation. Unit shall mount on vanity deck up to 2" [51] thick through 1" [Ø25] diameter hole minimum to 1-1/4" [Ø32] maximum and shall resist forced rotation up to 177 in-lb<sub>r</sub> (20 Nm) with 0390-ARK properly installed (provided). Owner’s Manual and Installation Guide (OM & IG) shall be provided with unit in carton.

**EZFill™ Vanity Mounted Automatic Soap Dispenser shall be Model № 0391-\_\_\_\_\_ {specify model suffix from schedule} of American Specialties, Inc., 441 Saw Mill River Road, Yonkers, NY 10701-4913**



**AMERICAN SPECIALTIES, INC.**  
 441 Saw Mill River Road, Yonkers, NY 10701  
 (914) 476.9000 • (914) 476.0688  
 www.americanspecialties.com

<b>MODEL №:</b>	<b>0391-(n)</b>
ISSUED:	12/13
REVISED:	12 JAN 2017

**EZFiii™ VANITY MOUNTED AUTOMATIC SOAP DISPENSER (PAGE 2 OF 2)**

**INSTALLATION**

Install spout and sensor housing to vanity deck with anti-rotation kit escutcheon flange, rubber washers and basin nut (supplied) through 1-1/8" diameter [Ø28.5] mounting hole and 5/32" dia. [Ø4] adjacent hole for anti-rotation pin of escutcheon flange. Mount pump/control housing with bottle support bracket using screws (provided) to convenient location under vanity within 24" [610] of shank bottom. Connect flex tubing from dispenser shank to fitting on top of pump/control housing. Connect spout control cable plug into control unit inline cable connector. Mount battery compartment in convenient location under vanity deck with two (2) screws and wall anchors (supplied) within easy reach of extension cable length and plug connector into mating inline power connector. Install six (6) 'D'-size 1.5V cells (supplied by others) in under-deck battery compartment according to polarity indication, plug extension cable jack into battery box socket in cover handle and screw lock cover. Alternatively, plug AC Adapter into GFCI power outlet located under vanity within 13.5 ft (412 cm) of pump/control housing and plug connector into mating inline power connector. Fill tank with appropriate viscosity non-abrasive soap to correct level and screw into pump/control housing to retain for operation.

**OPERATION**

Unit shall operate each time an object is positioned within the sensing range of 1-3/16" to 3-15/16" ± 3/8" [30 to 100 ± 10] directly in front of the spout. A stream of liquid soap drops with total dispense amount of 0.03 oz (0.8 ml) will be pumped from the nozzle during each activation. Optional remote control unit Model № 0390-R (supplied {one (1) per six (6) pack} or order separately) will allow owner programming of alternate dispense amounts. See Model № 0390-R TDS and Owner's Manual for complete description of functions. Unit will dispense soap while batteries are at suitable charge level and correct viscosity soap is present in the tank and system is correctly maintained to enable dispensing (red LED is not flashing continuously or does not remain dark). LED will display red flash for sensing and continuous flashing for low battery condition. Push button releases soap for easy soap priming. Soap is manually replenished and batteries are replaced on service interval determined by maintenance schedule.

Schedule of Model № Suffix Codes and Application

Model № Suffix	Service Application
1A	Universal Model, Battery Operation
1AC	Universal Model, AC Adapter Operation
3AC	AU Model, AC Adapter Operation
6-1A	Universal Model, Battery Operation, Six Pack
6-1AC	Universal Model, AC Adapter Operation, Six Pack
6-3AC	AU Model, AC Adapter Operation, Six Pack