



TOILET
PARTITIONS.COM

- 304 SS w/ #4 Satin Finish
- Vandal Resistant
- Anti-Grip Head-Rail
- Smooth, Clean & Elegant

- Easy to Install
- 91% Recycled Content
- Fire Proof
- Wow your Customers



Aluminum extruded head-rail with an anti-grip head-rail that features a double ridge to prevent people from hanging on and destroying your restroom stalls.



Stainless steel satin brushed shoes will trim out bottom of pilasters. These shoes will hide the unevenness of your floor.



The entire core is engineered with a structural honeycomb that reinforces the stainless steel making this product strong, lightweight and enhances its ability to withstand overall impact.



Chrome polished door hardware and brackets come standard on the stainless steel partitions.



The entire core is engineered with a structural honeycomb that reinforces the stainless steel making this product strong, lightweight and enhances its ability to withstand overall impact.



Every compartment will come with a stainless steel hook. All fasteners and hardware for the entire project are included.



TOILET
PARTITIONS.com

#4 Brushed Stainless Steel



Standard brushed stainless steel promotes a hygienic environment while offering excellent corrosion resistance and a clean, modern appearance.



**Stainless Steel - Headrail Braced
STANDARD
Metal Toilet Partitions**

Material Specification

1 . 0 1 **Construction**

Doors, Panels and Pilasters shall be constructed of two sheets of panel flatness type 304, #4 brushed finish stainless steel, laminated under pressure to a "verticel" honeycomb core for impact resistance, rigidity and sound deadening. Honeycomb to be of virgin, long fiber paper with a maximum 13mm (0.5") cell size. Formed edges to be welded together and interlocked, under tension, with a roll-formed oval crown stainless steel locking bar, mitred, welded and ground smooth at the corners.

1 . 0 2 **Doors**

Shall be 1460mm (57.5") high and 25mm (1") thick with cover sheets not less than 0.8mm (.030").

1 . 0 3 **Panels**

Shall be 1460mm (57.5") high and 25mm (1") thick with cover sheets not less than 0.8mm (.030").

1 . 0 4 **Pilasters**

Headrail braced pilasters shall be 32mm (1.25") thick with cover sheets not less than 0.8mm (.030").

1 . 0 5 **Headrail**

Shall be 25mm (1") by 41mm (1.625") extruded anodized aluminum with double-ridge anti-grip design. Wall thickness to be 1.5mm (0.060") and shall be securely attached to wall and pilasters with manufacturer's fittings in such a way as to make a strong and rigid installation. All joints in headrails shall be made at pilaster.

1 . 0 6 **Hardware & Fittings**

All panel and pilaster brackets and all door hardware shall be chrome plated zinc die castings, standard. Fasteners are 12 x 1-3/4" and 12 x 5/8" TR-27 6-lobe security screws. Doors shall be equipped with a gravity type hinge mounted on the lower pilaster hinge bracket. Door hinges shall be the wrap around type and adjustable to permit the door to come to rest at any position when not latched. Each door to be fitted with a combined coat hook and bumper and a concealed latch, with face mortised flush with edge strip of door. The combined stop and keeper shall have a 19mm (0.75") diameter bumper locked in place. Threaded door top hinge pin shall have a metal core and self lubricating nylon sleeve to ensure smooth, quiet operation. Pilaster shoes shall be a welded one-piece design made from polished stainless steel. Two-piece shoes that can disassemble when kicked are unacceptable.

1) Stainless Steel Hardware Upcharge Option:

- All pilaster, panel and screen brackets are stamped Stainless Steel, #4 brushed finish.
- All door wrap around hinge brackets are cast Stainless Steel, #4 brushed finish.
- All 12 x 1-3/4" & 12 x 5/8" TR-27 6-lobe security screws are stainless steel, #4 brushed finish.
- All pilaster shoes are stainless steel, #4 brushed finish.
- All inner, barrier free inner, outer, door pulls, stop and keepers, coat hooks and door castings are standard zinc die castings, #4 brushed finish.
- All other components not outlined here are standard Hadrian hardware items.

2) #4 Brushed Aluminum Upcharge Option:

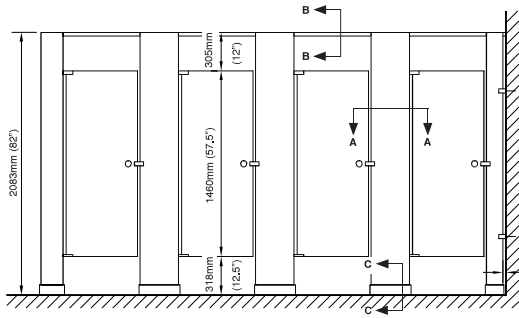
- Extruded aluminum headrail, alcove channels, continuous "no sightline" stop and hinge filler available in #4 brushed finish as an option.

1 . 0 7 **Finish**

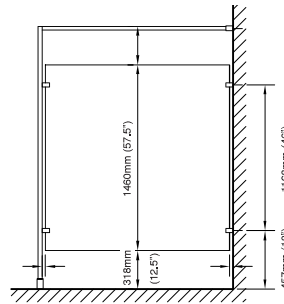
Type 304, #4 brushed finish.



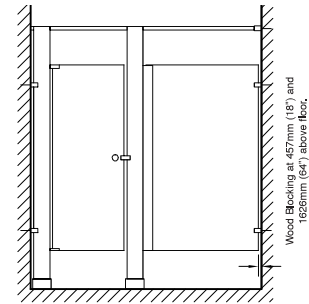
Stainless Steel - Headrail Braced STANDARD Metal Toilet Partitions



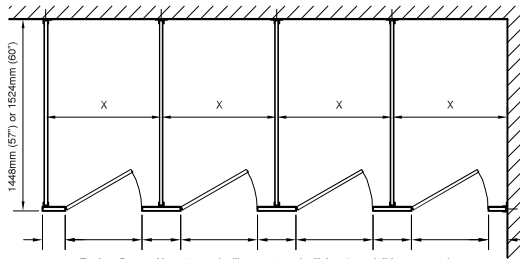
front elevation



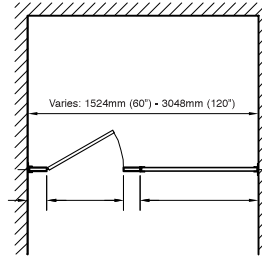
side elevation



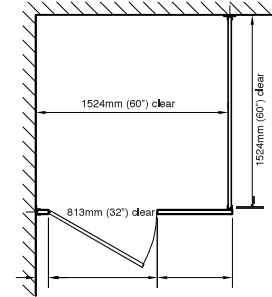
alcove elevation



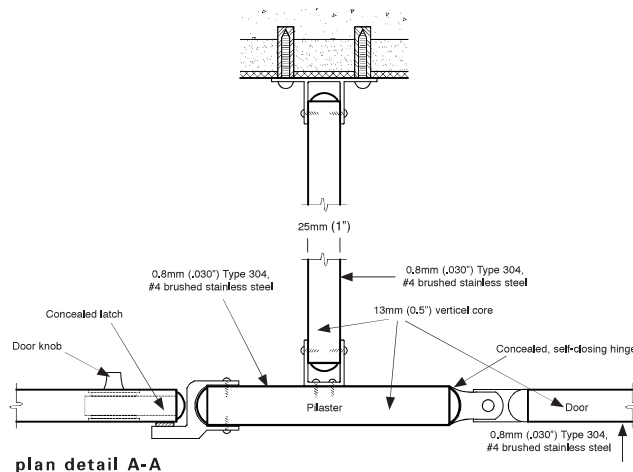
plan



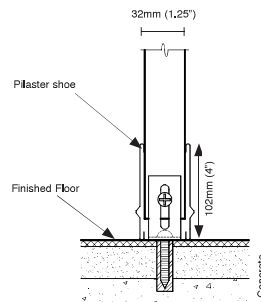
alcove plan



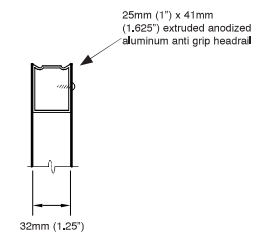
barrier-free plan



plan detail A-A



section detail C-C



section B-B

Important Note:

Refer to final drawings for wood blocking information. Wood blocking is critical to ensure a rigid installation.