



Estimate

ADDRESS

OES EQUIPMENT

ATTN: OSCAR CORTEZ

RE: EDWARDS 3009 DAIMLER LABS

ESTIMATE

10819

DATE

04/19/2024

SALES REP

CHRISTINA 619-635-2888

ACTIVITY	DESCRIPTION	QTY
MATERIAL-EXPENSE	EVOLVE SERIES PHENOLIC BY BOBRICK PER ATTACHED INFO	
STYLE	FLOOR MOUNTED/OVERHEAD BRACED	
HARDWARE	HARDWARE INCLUDED PER ATTACHED	
COLOR	FUNDERMAX BRUSHED ALUMINUM 0328-FH	
STALLS	INCLUDED IN PROPOSAL	16
SCREENS	INCLUDED IN PROPOSAL	6
CAN SHIP IN	APPROX. 7-8 WEEKS	
STANDARD FREIGHT INCLUDED	BASED ON (1) SINGLE SHIPMENT TO 92807	

*** QUOTES ARE VALID FOR 30 CALENDAR DAYS.

• QUANTITIES & DESCRIPTIONS NOT GUARANTEED TO AGREE WITH PLANS AND/OR SPECS. IT IS YOUR RESPONSIBILITY TO REVIEW ENTIRE QUOTE/SUBMITTAL PRIOR TO BIDDING YOUR PROJECT. YOU ARE ALSO RESPONSIBLE FOR VERIFYING LOCAL MUNICIPALITY / CODE COMPLIANCE.
ANY CHANGES MADE CAN IMPACT PRICING.

TOTAL

\$37,220.00

Accepted By

Accepted Date

Shipping Information (PLEASE MARK ALL THAT APPLY):



- ☐ Ship ASAP
- ☐ Do NOT Ship Before Date ____/____/____
- ☐ Lift Gate Fee Add. \$125.00
(REQUIRED IF NO FORKLIFT OR LOADING DOCK)
- ☐ Residential / Non-Commercial Delivery Add. \$95.00*
- ☐ Notification call prior to delivery Add \$40.00

APPROVED: _____

*** The term "residential/non-commercial" also includes apartments, places of worship, schools, pre-schools, day cares, camps, farms, public storage facilities, business operating within a private residence, and other such locations not generally recognized as commercial locations and shall apply to the entire premises.**

Job Name: **Edwards 3009 Daimler Labs**

Quote Date: **10/26/2023** **REVISED 4/5**

Number of Stalls: **16**

Material: **FunderMax Brushed Aluminum 0328-FH**

Hardware: **Aluminum Hardware (Door and Pedestal)**

Component & Pedestal Height: **72in Component Height / 9in Pedestals**

7-8 Week Lead Time

Layout	Unit Thus
Womens 132 (1 Alc 60"x120" Co 2 Std 36"x60")	1
Mens 131 (1 Alc 60"x120" Co 1 Std 36"x60")	1
Womens 170 (1 Alc 60"x120" Co 3 Std 36"x60")	1
Mens 169 (1 Alc 60"x120" Co 2 Std 36"x60")	1
Womens 202 (1 Alc 60"x120" Co 1 Std 36"x60")	1
Mens 203 (1 Alc 60"x120" Co 1 Std 36"x60")	1
24" Urinal Screen	6

Special Notes:

Installation Requirements: Evolve is a European-style cubicle, and installation is different from standard partitions (doors, pilasters, panels). Installation instructions and training videos are available for new Evolve installers.

[Click here for installation videos.](#)

System:

Height: 82" overall system height from finished floor to top of headrail.

Configuration: Floor-Anchored, Overhead Braced

Frame: Full anodized aluminum frame including extruded aluminum headrail and vertical posts. Lock locates directly into vertical closing post.

Door: Class-A Compact Laminate (solid phenolic) ½" thick material. Through-fixed extruded aluminum brackets allow the door to pivot between a structural aluminum headrail and floor fixed foot. Foot incorporates a spring closing mechanism and includes height adjustment. Complete with anti-finger trap clearance on pivot side of door.

Divider: Class-A Compact Laminate (solid phenolic) ½" thick material. Supported 9" from the floor by anodized aluminum foot, with height adjustment.

Fascia: Where required, Class-A Compact Laminate (solid phenolic) ½" thick material. Fascia widths exceeding 9" will require support by aluminum foot with 9" floor-clearance.

Hardware: Anodized aluminum lock, able to be opened with a closed fist, is fixed through the door to the face plate for added strength. Sacrificial hard nylon shear tip to the lock finger, which locates directly into the vertical closing post. Latch allows door to be opened from the outside of the compartment with a standard Allen Wrench in the emergency release slot located in the face of the indicator. Divider fixed to back wall using continuous brackets secured using through-fixings. Anodized aluminum coat hook supplied as a standard.

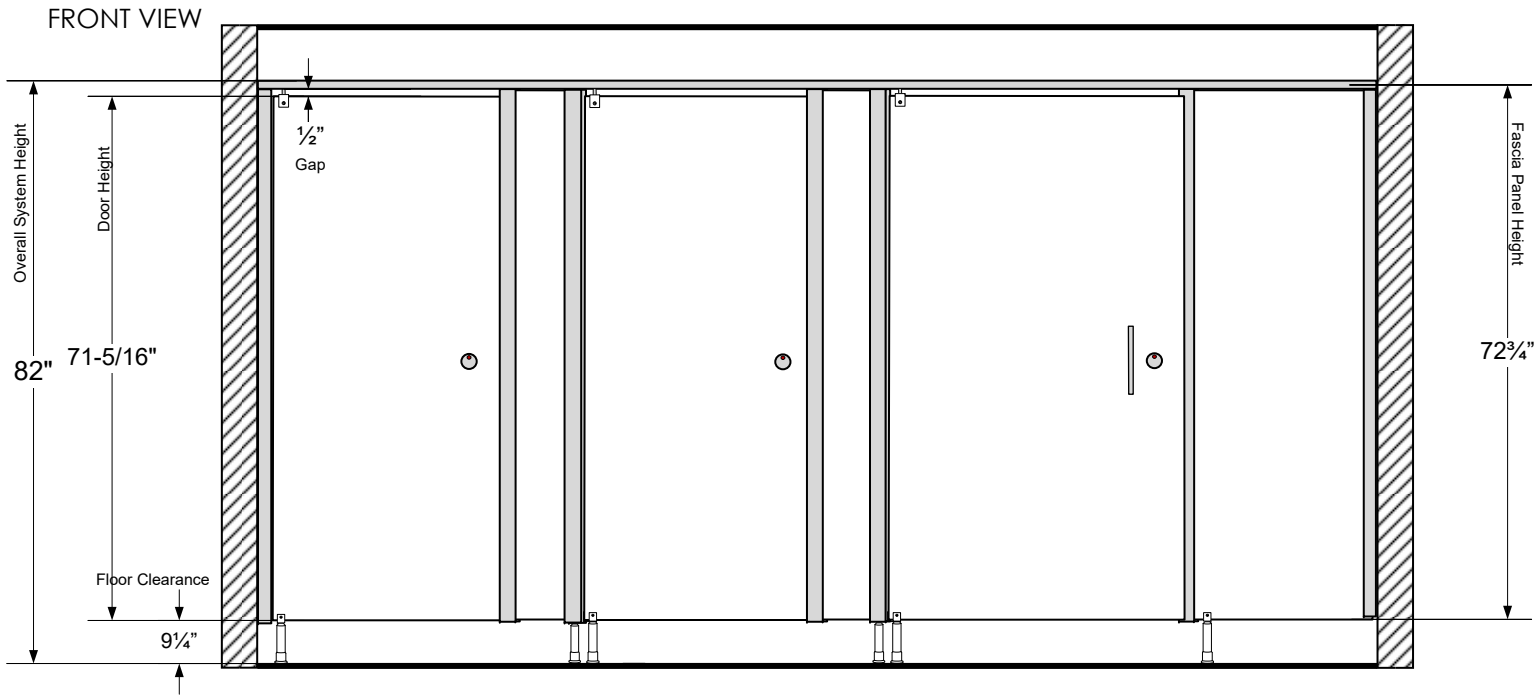
Pricing is valid for orders placed by September 30, 2024, for immediate shipment. Escalation beyond September 2024 is currently not available.

[More information can be found on www.bobrick.com/Evolve](http://www.bobrick.com/Evolve)

Typical Elevation

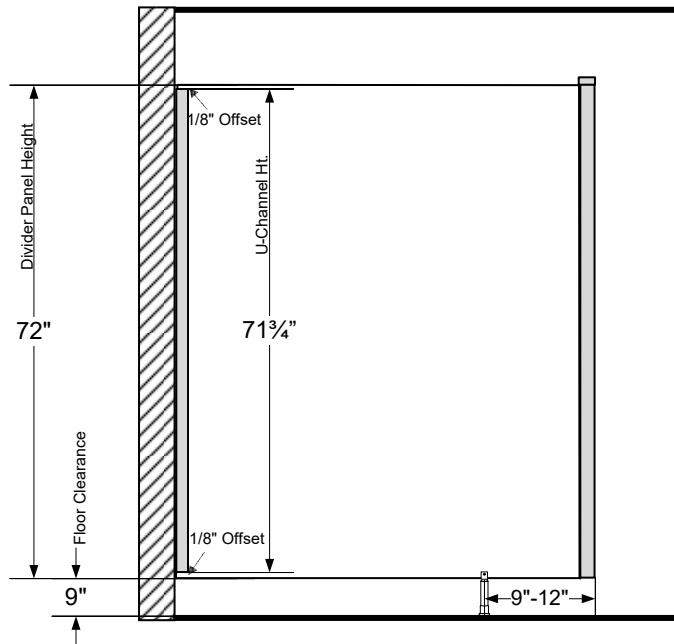


BUILDING VALUE SINCE 1906
EVOLVE CUBICLES



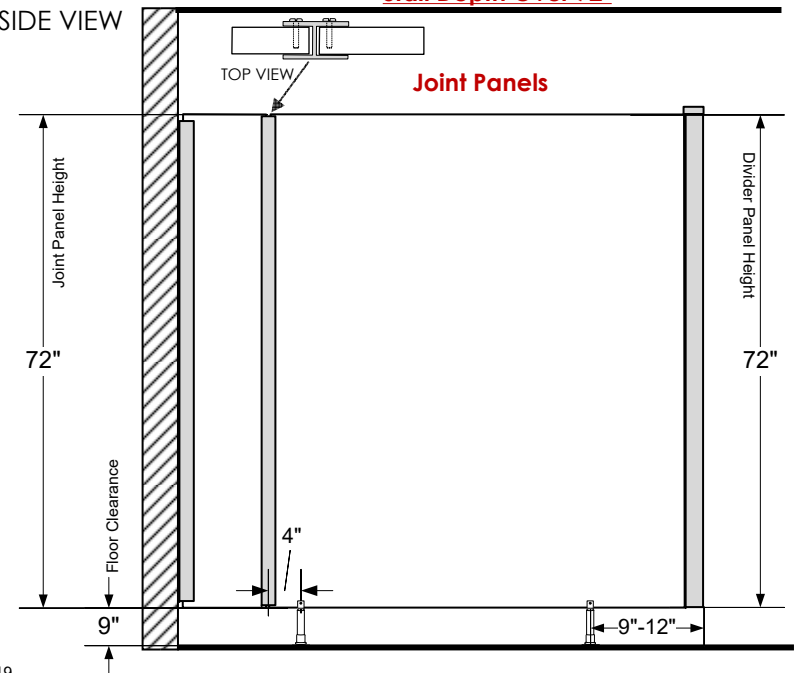
SIDE VIEW

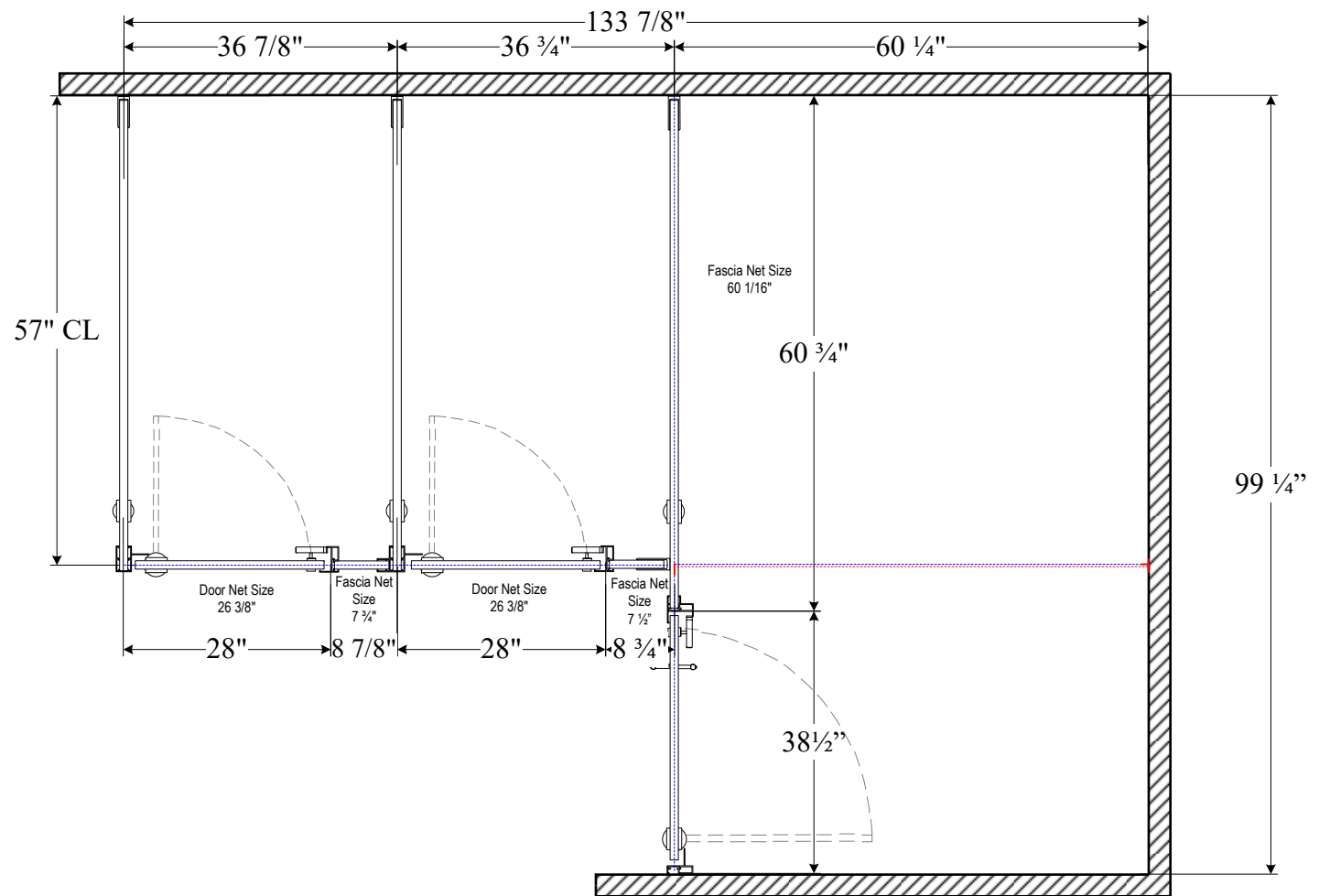
Stall Depth Under 72"



SIDE VIEW

Stall Depth Over 72"





Evolve Cubicle System

Overall Height: 82"

Door Floor Clearance: 9 1/4" Divider Panel Floor Clearance: 9"

Component:	Height:	Color:
Fascias	72 3/4"	FunderMax Brushed Aluminum 0328-FH
Doors	71-5/16"	FunderMax Brushed Aluminum 0328-FH
Panels	72"	FunderMax Brushed Aluminum 0328-FH



IMPORTANT NOTES:

- Equipment to be supplied will conform to the dimensions shown in this drawing.
- Drawings are NOT to scale.
- Bobrick instructions used with these layouts.
- It is your responsibility to verify you that you are in compliance with Local and Federal A.D.A Guidelines.
- Each drawing must be signed approved before fabrication can begin. Fabrication will be from final approved drawings only. **Please review carefully before signing approved.**

PO#

0-20020

Distributor Name:

Fry Specialties

DATE:

4/19/2024

REVISED:

PAGE:

2 of 8

Approval Signature:

SO#


Job Name:

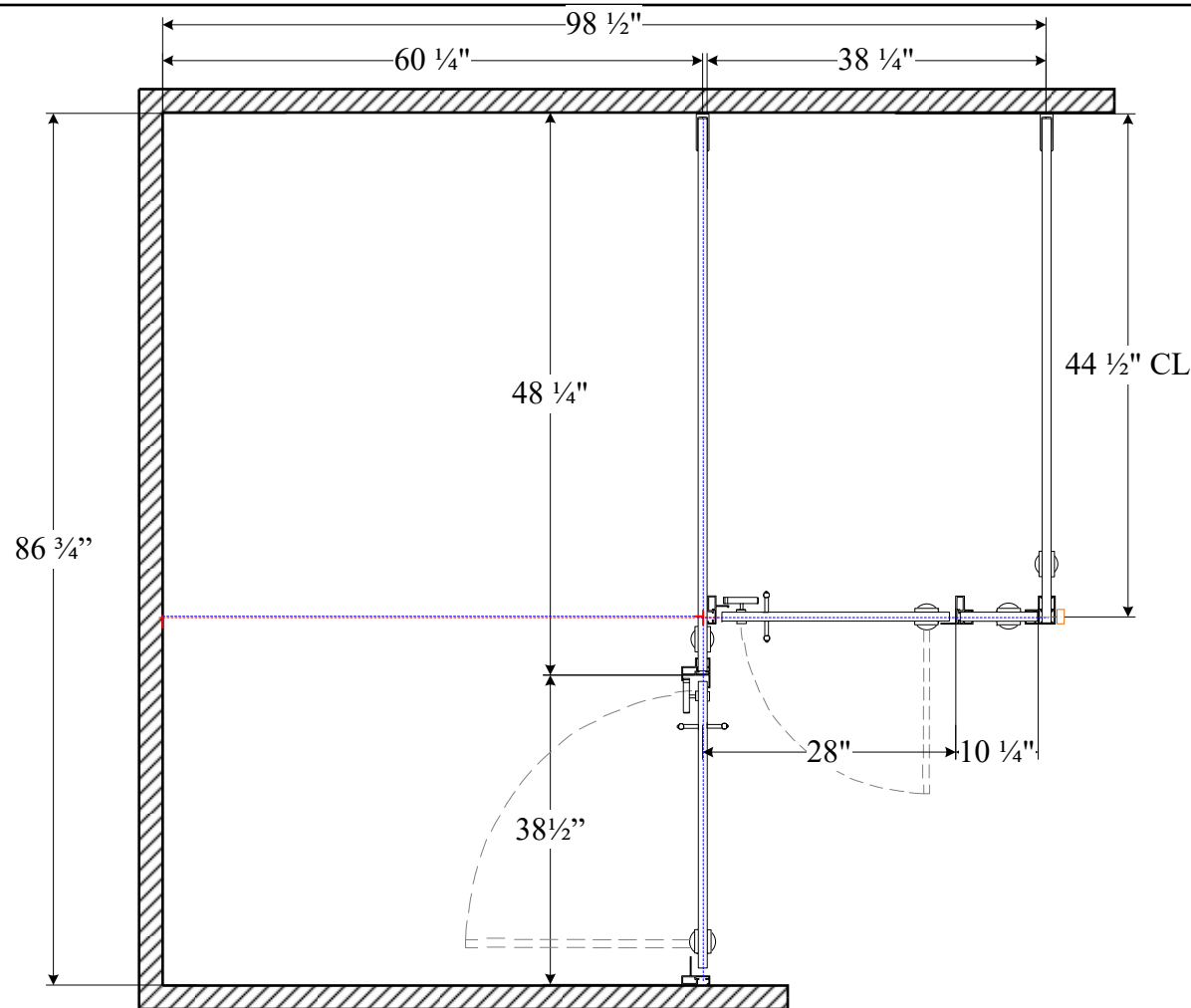
Edwards 3009 Daimler
Labs

Room Name:

Womens 132

X

PAGE:	
3 of 8	
DATE:	REVISED:
3-4-2021	
IMPORTANT NOTES:	
1. Equipment to be supplied will conform to the dimensions shown in this drawing. 2. Drawings are NOT to scale. 3. Bobrick instructions used with these layouts. 4. It is your responsibility to verify you that you are in compliance with Local and Federal A.D.A Guidelines. 5. Each drawing must be signed approved before fabrication can begin. Fabrication will be from final approved drawings only. Please review carefully before signing approved.	
 Evolve Cubicles 6901 Tujunga Avenue, North Hollywood, CA 91605 Customer Service: (818) 982-9600, Fax: (818) 503-9287	
SO#	
PO#	
0-20020	
Distributor Name:	
Fry Specialties	
Job Name:	
Edwards 3009 Daimler Labs	
Room Name:	
Mens 131	
Approval Signature:	
X	

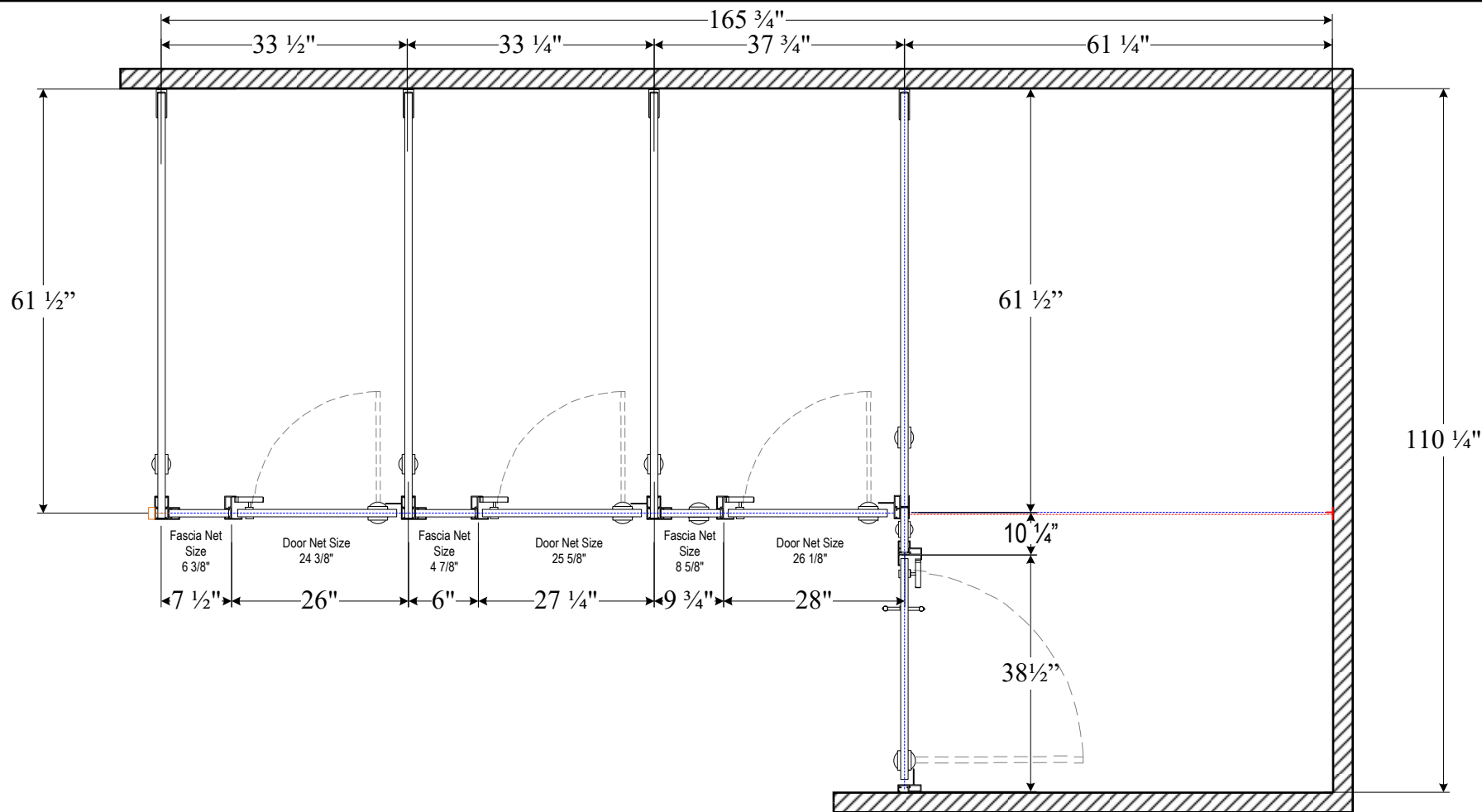


Evolve Cubicle System

Overall Height: 82"

Door Floor Clearance: 9 1/4" Divider Panel Floor Clearance: 9"

Component:	Height:	Color:
Fascias	72 3/4"	FunderMax Brushed Aluminum 0328-FH
Doors	71-5/16"	FunderMax Brushed Aluminum 0328-FH
Panels	72"	FunderMax Brushed Aluminum 0328-FH



Evolve Cubicle System

Overall Height: 82"

Door Floor Clearance: 9 1/4" Divider Panel Floor Clearance: 9"

Component:	Height:	Color:
Fascias	72 3/4"	FunderMax Brushed Aluminum 0328-FH
Doors	71-5/16"	FunderMax Brushed Aluminum 0328-FH
Panels	72"	FunderMax Brushed Aluminum 0328-FH



BUILDING VALUE SINCE 1906
6901 Tujunga Avenue, North Hollywood, CA 91605
Customer Service: (818) 982-9600

IMPORTANT NOTES:

1. Equipment to be supplied will conform to the dimensions shown in this drawing.
2. Drawings are NOT to scale.
3. Bobrick instructions used with these layouts.
4. It is your responsibility to verify you that you are in compliance with Local and Federal A.D.A Guidelines.
5. Each drawing must be signed approved before fabrication can begin. Fabrication will be from final approved drawings only. **Please review carefully before signing approved.**

PO#

0-20020

Distributor Name:

Fry Specialties

DATE:

4/19/2024

REVISED:

PAGE:

4 of 8

Approval Signature:

X

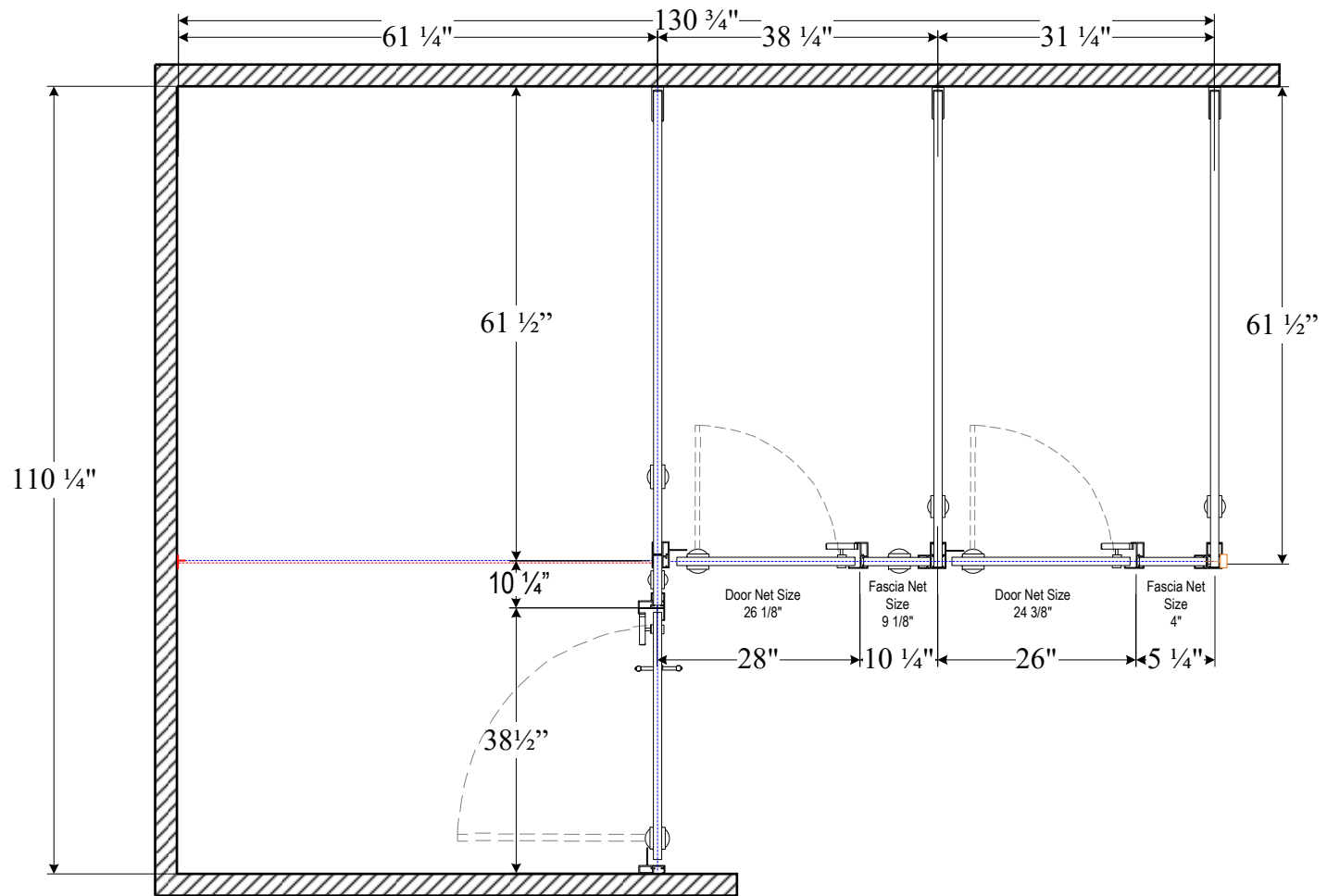
SO#

Job Name:

Edwards 3009 Daimler
Labs

Room Name:

Womens 170



Evolve Cubicle System

Overall Height: 82"

Door Floor Clearance: 9 1/4" Divider Panel Floor Clearance: 9"

Component:	Height:	Color:
Fascias	72 3/4"	FunderMax Brushed Aluminum 0328-FH
Doors	71-5/16"	FunderMax Brushed Aluminum 0328-FH
Panels	72"	FunderMax Brushed Aluminum 0328-FH



IMPORTANT NOTES:

- Equipment to be supplied will conform to the dimensions shown in this drawing.
- Drawings are NOT to scale.
- Bobrick instructions used with these layouts.
- It is your responsibility to verify you that you are in compliance with Local and Federal A.D.A Guidelines.
- Each drawing must be signed approved before fabrication can begin. Fabrication will be from final approved drawings only. **Please review carefully before signing approved.**

PO#

0-20020

Distributor Name:

Fry Specialties

DATE:

4/19/2024

REVISED:

PAGE:

5 of 8

Approval Signature:

SO#

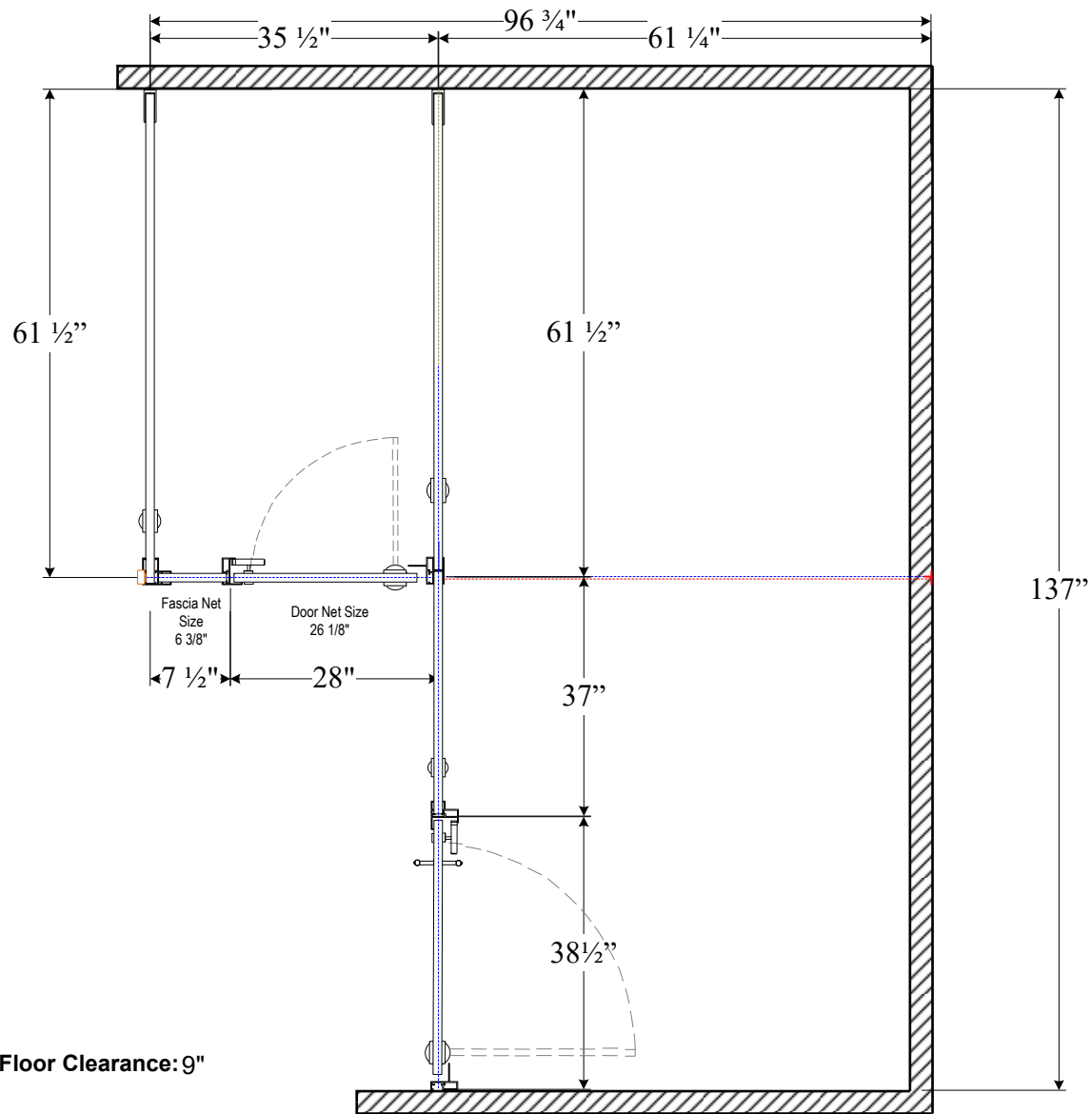
Job Name:

**Edwards 3009 Daimler
Labs**

Room Name:

Mens 169

X



Evolve Cubicle System

Overall Height: 82"

Door Floor Clearance: 9 1/4" Divider Panel Floor Clearance: 9"

Component:	Height:	Color:
Fascias	72 3/4"	FunderMax Brushed Aluminum 0328-FH
Doors	71-5/16"	FunderMax Brushed Aluminum 0328-FH
Panels	72"	FunderMax Brushed Aluminum 0328-FH



IMPORTANT NOTES:

- Equipment to be supplied will conform to the dimensions shown in this drawing.
- Drawings are NOT to scale.
- Bobrick instructions used with these layouts.
- It is your responsibility to verify you that you are in compliance with Local and Federal A.D.A Guidelines.
- Each drawing must be signed approved before fabrication can begin. Fabrication will be from final approved drawings only. **Please review carefully before signing approved.**

PO#

0-20020

Distributor Name:

Fry Specialties

DATE:

4/19/2024

REVISED:

PAGE:

7 of 8

Approval Signature:

SO#

Job Name:

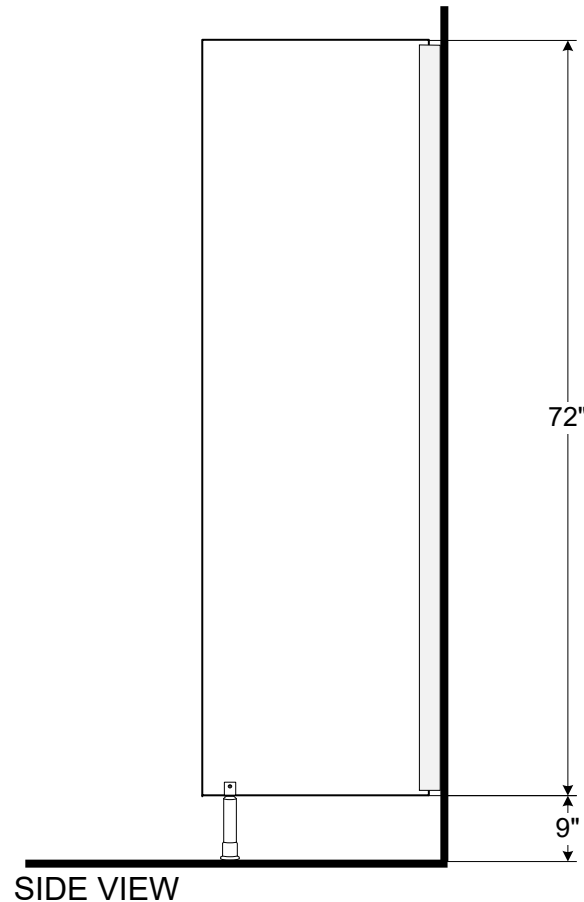
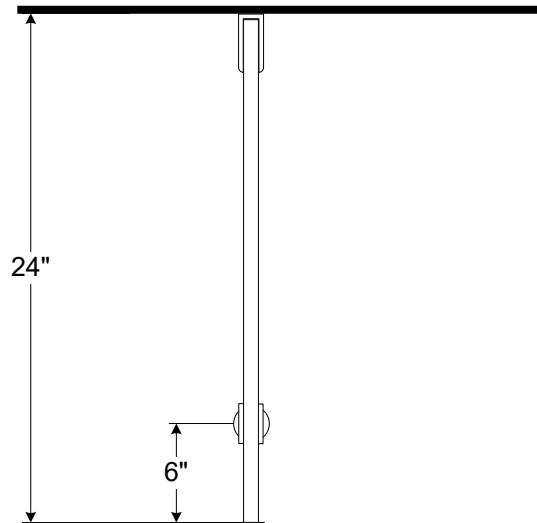
Edwards 3009 Daimler
Labs

Room Name:

Mens 203

X

PLAN VIEW



SIDE VIEW


Make 6 Unit Thus

Evolve Cubicle System

Overall Height: 82"

Door Floor Clearance: 9 $\frac{1}{4}$ " Divider Panel Floor Clearance: 9"

Component:	Height:	Color:
Fascias	72 $\frac{3}{4}$ "	FunderMax Brushed Aluminum 0328-FH
Doors	71-5/16"	FunderMax Brushed Aluminum 0328-FH
Panels	72"	FunderMax Brushed Aluminum 0328-FH

PAGE: 8 of 8	
DATE: 3-4-2021	REVISED:
IMPORTANT NOTES: <ol style="list-style-type: none"> 1. Equipment to be supplied will conform to the dimensions shown in this drawing. 2. Drawings are NOT to scale. 3. Bobrick instructions used with these layouts. 4. It is your responsibility to verify you that you are in compliance with Local and Federal A.D.A Guidelines. 5. Each drawing must be signed approved before fabrication can begin. Fabrication will be from final approved drawings only. Please review carefully before signing approved. 	
 Evolve Cubicles <small>6901 Tujunga Avenue, North Hollywood, CA 91605 Customer Service: (818) 982-9600, Fax: (818) 503-9287</small>	
SO#	
PO# 0-20020	
Distributor Name: Fry Specialties	
Job Name: Edwards 3009 Daimler Labs	
Room Name: Mens	
Approval Signature:	
X	

TAILOR MADE*

Evolve comes in an array of colors that can fit any project. Class A or B ASTM E 84 Interior Wall Fire-Rating Finish classification core materials are available.



*Other colors are available. Please refer to [Bobrick.com](https://www.bobrick.com). **Wilsonart® SOLICOR™ is a specialty laminate with a solid color core to match the surface. Color upcharge premium applies. Additional hardware will be required for deep stalls.

RESOURCES

Bobrick provides helpful step-by-step video guides to complete an Evolve Cubicle system installation.

Scan QR code for link:



SCRATCH, DENT AND GRAFFITI RESISTANCE

Bobrick Compact Grade Laminate (CGL) (Black Core) performs exceptionally well for scratch, dent and graffiti resistance when subjected to industry-standard ASTM test protocols.

	Material	Scratch Resistance ASTM D 2197 Weight Required to Scratch	Impact Resistance ASTM D 2794 Visible Damage, Inches-Pounds Per Force (lbf)	Graffiti Resistance ASTM D 6578 Marks Removed (Out of 6)
Bobrick Material	Compact Grade Laminate (CGL) (Black Core)	>10kg	168"-lbf	5
Other Manufacturers' Materials	Plastic (HDPE)	<0.5kg	<1"-lbf	3
	Stainless Steel	1.0kg	2"-lbf	5

[Bobrick.com](https://www.bobrick.com)

U.S. Corporate Office

818.982.9600

customerservice@bobrick.com



BUILDING VALUE SINCE 1906

Evolve is part of an industry-leading line of toilet partitions and cubicle systems by Bobrick. To learn more, visit [bobrick.com/evolve](https://www.bobrick.com/evolve). Colors are printed reproductions and are for descriptive purposes only. Refer to manufacturer's samples for absolute color fidelity. Color guides and samples are available from Bobrick on request. Material can vary in color between production batches. **For product warranty information, please visit [bobrick.com](https://www.bobrick.com).**

Brochure No. 2019-EVC, May © 2021 Bobrick Washroom Equipment, Inc. Printed in U.S.A.