



Estimate

ADDRESS

BUILD A BOX HOMES
ATTN: MICHAEL MCDERMOTT
RE: FROST PROTECTION

ESTIMATE

11360

DATE

04/24/2024

SALES REP

CHRISTINA 619-635-2888

ACTIVITY	DESCRIPTION	QTY
MATERIAL-EXPENSE	POWDER SHIELD BY METPAR	
STYLE	FLOOR MOUNTED/OVERHEAD BRACED	
HARDWARE	HARDWARE INCLUDED PER ATTACHED	
COLOR	ALMOND	
STALLS	INCLUDED IN PROPOSAL	1
SCREENS	INCLUDED IN PROPOSAL	1
CAN SHIP IN	APPROX. 2-3 BUSINESS DAYS	
STANDARD FREIGHT INCLUDED	BASED ON (1) SINGLE SHIPMENT TO 77351 (ESTIMATED TRANSIT = 2 BUSINESS DAYS)	
	*** SALES TAX WILL BE ADDED IF SHIPPING TO CA, TN, TX, OK, NY, FL, GA, MA, NJ, WA, AZ, MI, MN, NC, VA, IL AND MD.	

• QUOTES ARE VALID FOR 30 DAYS
• QUANTITIES & DESCRIPTIONS NOT GUARANTEED TO AGREE WITH PLANS AND/OR SPECS. IT IS YOUR RESPONSIBILITY TO REVIEW ENTIRE QUOTE/SUBMITTAL PRIOR TO BIDDING YOUR PROJECT. YOU ARE ALSO RESPONSIBLE FOR VERIFYING LOCAL MUNICIPALITY / CODE COMPLIANCE.
ANY CHANGES MADE CAN IMPACT PRICING.

TOTAL

\$1,040.00

Accepted By

Accepted Date

Shipping Information (PLEASE MARK ALL THAT APPLY):

- 
- ☐ Ship ASAP
 - ☐ Do NOT Ship Before Date ____/____/____
 - ☐ Lift Gate Fee Add. \$125.00
(REQUIRED IF NO FORKLIFT OR LOADING DOCK)
 - ☐ Residential / Non-Commercial Delivery Add. \$95.00*
 - ☐ Notification call prior to delivery Add \$40.00

APPROVED: _____

*** The term "residential/non-commercial" also includes apartments, places of worship, schools, pre-schools, day cares, camps, farms, public storage facilities, business operating within a private residence, and other such locations not generally recognized as commercial locations and shall apply to the entire premises.**



METPAR POWDER SHIELD TOILET ENCLOSURES

The Corinthian – Type FP500 - Overhead Braced

MATERIALS: Bonderized, Galvanized Steel

THICKNESS: Doors..... 22 Gauge, Finished to 1" (25mm) at 58" (1473) high
Panels..... 22 Gauge, Finished to 1" (25mm) at 58" (1473) high
Pilasters..... 20 Gauge, Finished to 1¼" (32mm) at 82" (2083) high

CONSTRUCTION:

Doors:

Finished to 1"(25) thick, constructed of two sheets of 22-gauge, bonderized, galvanized steel formed and cemented under pressure to a honeycomb core. Door face sheets are welded at intervals around the entire perimeter. All edges to be finished with a 20-gauge interlocking molding. Corners are finished with pre-formed painted stainless steel reinforcements. Corners are to be welded internally to ensure that the galvanized rust resistant coating is not removed. Doors shall have internal steel reinforcements to secure hardware items.

Panels:

Finished to 1" (25) thick, constructed of 2 sheets of 22-gauge bonderized, galvanized steel, formed and cemented under pressure to a honeycomb core. All partition edges are finished with a 20-gauge interlocking molding. Corners are finished with pre-formed painted stainless steel reinforcements.

Pilasters:

Finished to 1¼" (32) thick, constructed of two sheets of 20-gauge, bonderized, galvanized steel, formed and assembled with a honeycomb core. Face sheets are electrically welded at intervals around the entire perimeter. All pilasters will have a 4" (102) high #4 finish stainless steel plinth and have straight, flat sides with rounded edges to match the pilaster profile. Pilasters will have leveling bolts threaded to the pilaster support bracket. Floor mounting will be with #12 x 2½" (64) screws and shields. Headrail is anodized aluminum .050 (1.27) wall thickness with anti-grip profile. The headrail is set into a 16ga. channel reinforcement which occupies the full width of the pilaster and is electrically welded in place for maximum strength.

BRACKETS:

Attachment brackets are die cast chrome plated stirrup brackets. Minimum of two (2) fittings at each connection.

DOOR HARDWARE:

Each compartment will be complete with two door hinges, latch, stop and keeper, coat hook, as well as all necessary fittings and fastenings for a complete installation. Hinges are fastened by means of tamper-proof Torx Pin Head through bolts, which are polished chrome plated. All other screws to be tamper-proof Torx Pin Head chrome plated. Doors are to be hung on a concealed, "stay-set", fully adjustable, non-rising door mechanism. Upper hinge pin shall be 3/8" (10) diameter steel. All hinges will have wrap-around flanges with a minimum of 5/8" (16) wrap onto pilaster. All doors will have a concealed ADA approved slide latch with external "in-use" indicator.

FINISH:

All rust inhibitive coated material shall be chemically cleaned and painted with multiple coats of Epoxy Hybrid Powder applied electrostatically.

OPTIONS:

Privacy Strips of a continuous anodized aluminum extrusion, provided for both strike & hinge sides to eliminate gaps between the door & pilaster. Full height bright dip anodized aluminum brackets or stainless steel angles & U-Channels. Stainless steel MutliCam® hinges. Cast S/S wraparound hinges with matching surface latch, S&K.



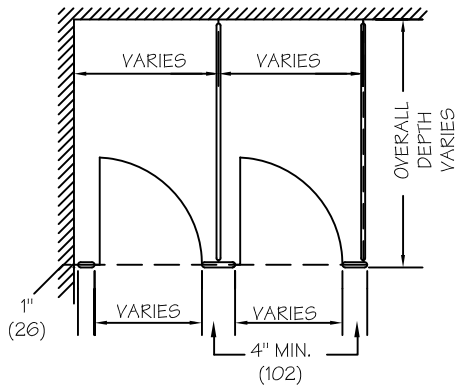
95 State Street, Westbury, New York USA 11590
Tel: 516-333-2600 ~ Fax: 516-333-2618
www.Metpar.com ~ Sales@Metpar.com

Get a 3-part detailed
industry format spec
sheet for 10-21-00
Toilet Partitions?



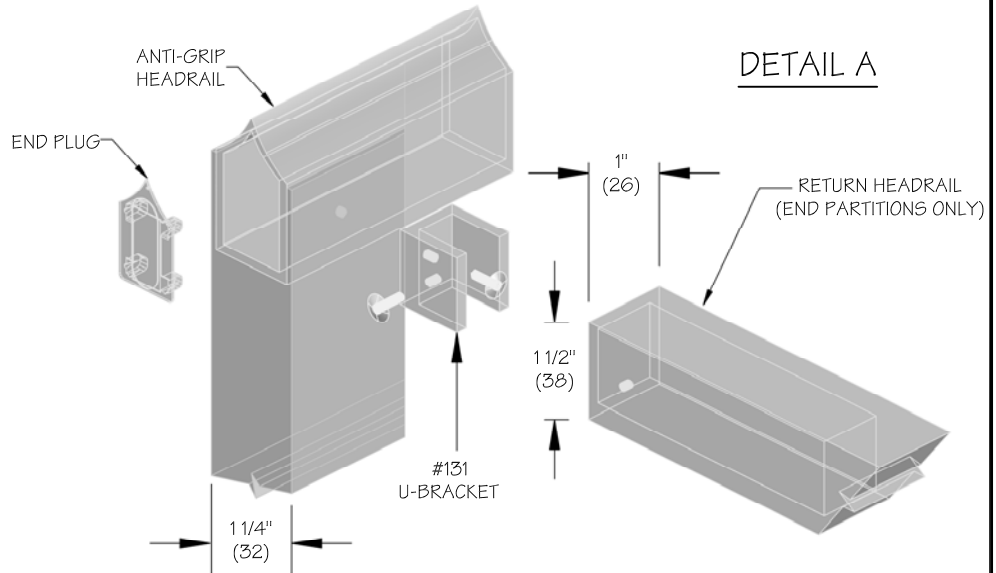
DIMENSIONS IN ()= MILLIMETERS

DETAIL A



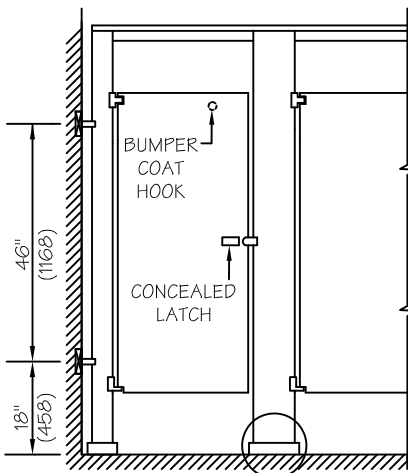
FLOOR PLAN

(DOTTED LINES INDICATE HEADRAIL)

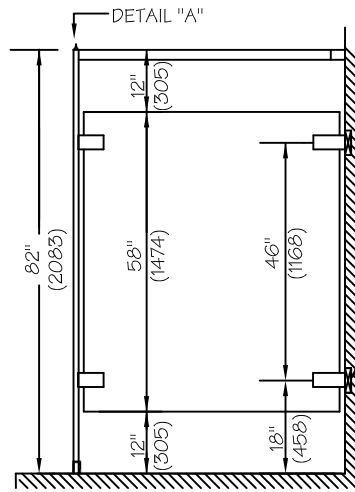


NOTES: This drawing is a standard detail intended to show general information. See shop drawings for actual job layout and specific job conditions that supercede any conflicting information on this sheet.

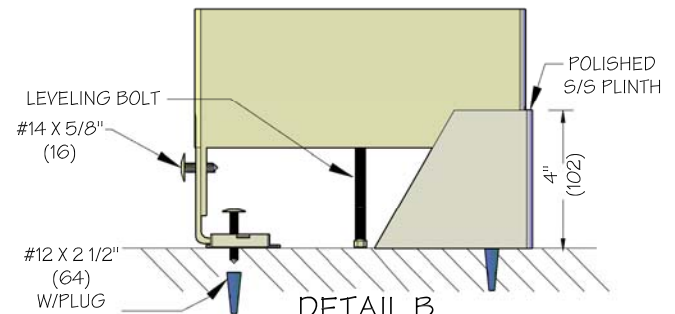
Blocking (by others) shown for standard CPZ stirrup brackets. for full height or any other bracket, consult with Metpar distributors for blocking information and locations.



FRONT ELEVATION



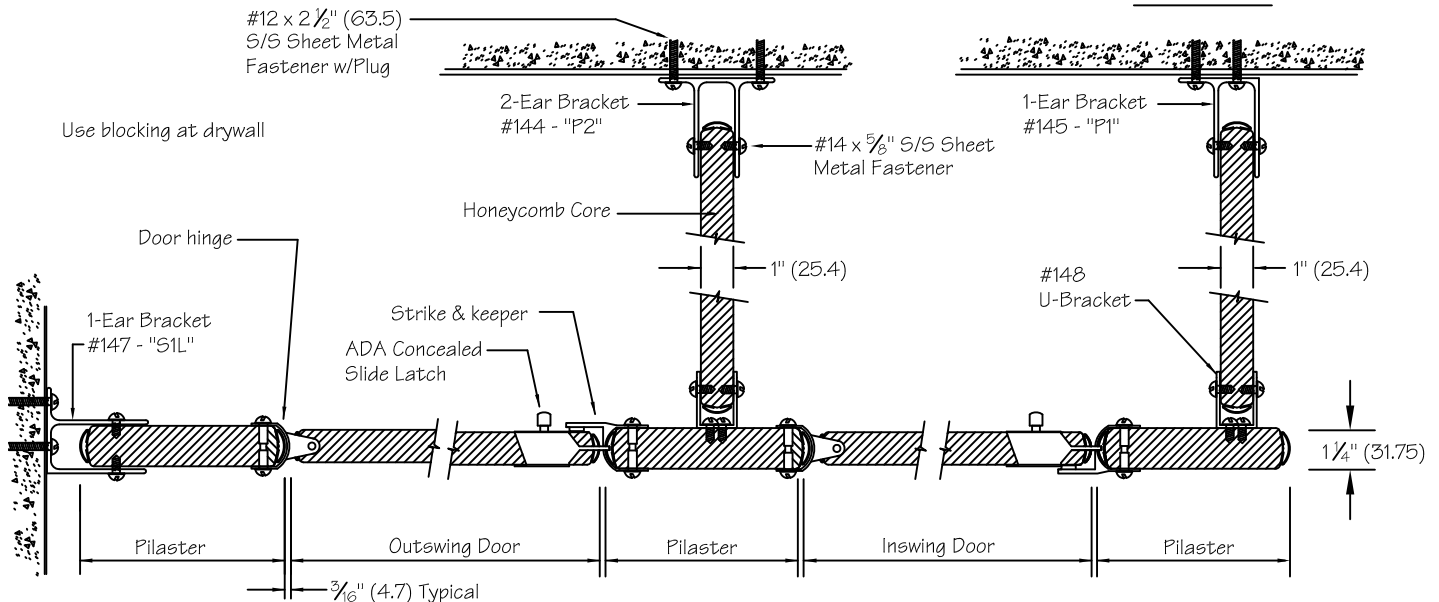
SIDE ELEVATION



DETAIL B

#12 x 2 1/2" (63.5)
S/S Sheet Metal
Fastener w/Plug

Use blocking at drywall



METPAR CORP

95 State Street, Westbury, NY 11590

Tel: 516-333-2600 Fax: 516-333-2618

www.Metpar.com ~ Sales@Metpar.com

POWDER SHIELD

Standard Detail Overhead Braced
FP500 - The Corinthian

FP500BE.DWG

09/07/2017



POWDER COATED



SHIPS IN 48 HOURS!



GRAPHITE 790 ⚡



ALMOND 300 ⚡



SAHARA BEIGE 450 ⚡



DESERT TAN 500 ⚡



PLATINUM 715 ⚡



GREY DAWN 700 ⚡

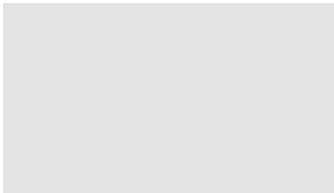


NICKEL SILVER ⚡★



TEXTURED BLACK ⚡

STANDARD SHIP



WHITE 149



FRENCH GREY 710



GRAPHITE 790



GUNMETAL GREY 750 ★



RED 650



NAVY BLUE 870



HUNTER GREEN 950



BLACK 021



Pepper Gray 765 ★

⚡ Express Ship is available in standard part sizes and Overhead Braced style. Grey Dawn also available in Floor Mounted style. For non-standard part sizes or other bracing styles, refer to "Standard Ship" lead time.

★ Premium colors available at a slightly higher cost. **Nickel Silver:** Graffiti resistant clearcoat finish with glossy appearance. **Gunmetal Grey:** Metallic semi-shiny finish. **Pepper Gray:** Multi-color speckle.

! Swatches are a printed representation of the color. Please view an actual sample prior to making your final selection. Request samples via samples@metpar.com

📍 **NEW YORK**
95 STATE STREET
WESTBURY, NY 11590
516-333-2600

📍 **TENNESSEE**
3024 CHEROKEE ROAD
MORRISTOWN, TN 37814
516-333-2600

📍 **FLORIDA**
7211 ANDERSON ROAD
TAMPA, FL 33634
516-333-2600

📍 **UTAH**
2180 SOUTH 300 WEST #104
SALT LAKE CITY, UT 84115
516-333-2600

✉ **CONTACT**
WWW.METPAR.COM
SALES@METPAR.COM
516-333-2600

Revision 04/04/2024



PRODUCT WARRANTY

Metpar Corporation ("Metpar") provides the following warranty with respect to Metpar toilet partitions (panels, doors, pilasters, urinal screens, and hardware), shower/changing compartments, and washroom accessories from the original date of purchase as outlined below:

Toilet Partitions & Shower/Changing Compartments

Material Type/Product	Warranty Period
Powder Coated	4 years
Stainless Steel	6 years
Dur-A-Tex™	5 years
Solid Plastic - Polly	15 years
Plastic Laminate	1 year
Phenolic – Black Core	15 years
Phenolic – Color Thru	15 years
Solid Surface	15 years
Solitude	15 years
Standard Hardware	1 year

Washroom Accessories

Material Type/Product	Warranty Period
All Material Types	1 year

Subject to the terms set out herein, this warranty is limited to the repair and/or exchange of defective material (breakage, corrosion, delamination, and defects in factory workmanship) when materials are used in a normal application and properly installed, used, and serviced. Metpar, at its sole option, can either repair or replace such material without charge.

This warranty is only for material and excludes any field labor charges or expenses related to the replacement of such items. This warranty excludes any damages created by vandalism, improper installation, and improper usage or exposure to toxic cleaning or environmental chemicals which may affect the surface of the materials.

Warranty claims must be made during the applicable warranty period and initiated by contacting Metpar customer service department at 516-333-2600 or email: service@metpar.com

NEW YORK

95 STATE STREET
WESTBURY, NY 11590
516-333-2600

TENNESSEE

3024 CHEROKEE ROAD
MORRISTOWN, TN 37814
516-333-2600

FLORIDA

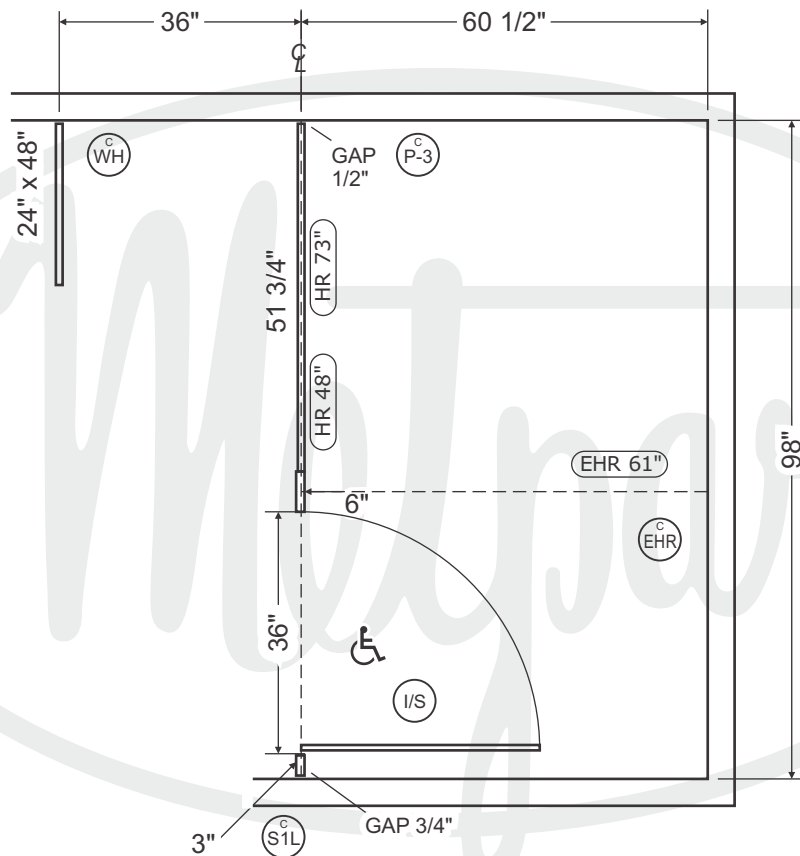
7211 ANDERSON ROAD
TAMPA, FL 33634
516-333-2600

UTAH

2180 SOUTH 300 WEST #104
SALT LAKE CITY, UT 84115
516-333-2600

CONTACT

WWW.METPAR.COM
SERVICE@METPAR.COM
516-333-2600



METPAR CORP. 95 State Street, Westbury, LI, NY 11590

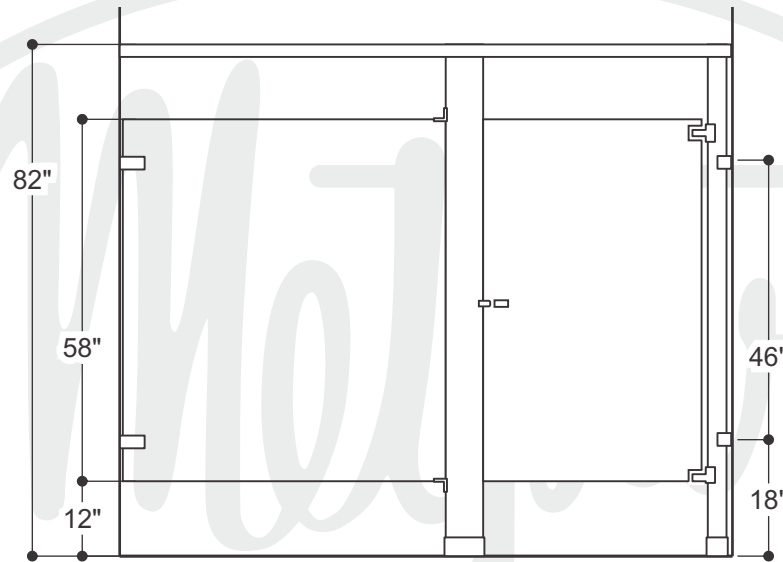
Tel: 516-333-2600 Fax: 516-333-2618 - www.Metpar.com - Sales@Metpar.com

Agent:	FRY SPECIALTY COMPANY INC	Quote #	MP-2024-203832
Project:	FROST PROTECTION	Mtrl:	Powder Shield Express
P.O.#		Style:	FP-500 Corinthian
Wall Brkts:	CP Zamak Stirrup	Color:	Almond 300
Door Hdwr:	CPZ Wrap w/ CPZ Conc Latch	Date:	4/24/2024

ACCESSORIES:

Room 1

1 THUS Sheet 1 of 1



METPAR CORP. 95 State Street, Westbury, LI, NY 11590
Tel: 516-333-2600 Fax: 516-333-2618 - www.Metpar.com - Sales@Metpar.com

Agent:	FRY SPECIALTY COMPANY INC	Quote #	MP-2024-203832
Project:	FROST PROTECTION	Mtrl:	Powder Shield Express
P.O.#		Style:	FP-500 Corinthian
Wall Brkts:	CP Zamak Stirrup	Color:	Almond 300
Door Hdwr:	CPZ Wrap w/ CPZ Conc Latch	Date:	4/24/2024

ACCESSORIES:

Room 1