



Estimate

ADDRESS
BUILD A BOX
ATTN: MIKE MCDERMOTT

ESTIMATE 11421
DATE 05/17/2024

SALES REP
CHRISTINA 619-635-2888

ITEM	DESCRIPTION	QTY
MATERIAL-EXPENSE	POWDER SHIELD BY METPAR * STANDARD 58" HIGH PANELS AND DOORS	
STYLE	FLOOR MOUNTED/OVERHEAD BRACED FP-500	
HARDWARE	STANDARD HARDWARE INCLUDED	
COLOR	STANDARD COLOR INCLUDED	
STALLS	INCLUDED IN PROPOSAL	7
SCREENS	WALL HUNG SCREEN 48" HIGH INCLUDED IN PROPOSAL	1
CAN SHIP IN	APPROX.	
STANDARD FREIGHT INCLUDED	BASED ON (1) SINGLE SHIPMENT TO 77351 *** FOR STANDARD BRUSHED FINISH STAINLESS STEEL MATERIAL, ADD \$3150.00., *** SALES TAX WILL BE ADDED IF SHIPPING TO CA, TN, TX, OK, NY, FL, GA, MA, NJ, WA, AZ, MI, MN, NC, VA, IL AND MD.	

• QUOTES ARE VALID FOR 30 DAYS
• QUANTITIES & DESCRIPTIONS NOT GUARANTEED TO AGREE WITH PLANS AND/OR SPECS. IT IS YOUR RESPONSIBILITY TO REVIEW ENTIRE QUOTE/SUBMITTAL PRIOR TO BIDDING YOUR PROJECT. YOU ARE ALSO RESPONSIBLE FOR VERIFYING LOCAL MUNICIPALITY / CODE COMPLIANCE.
ANY CHANGES MADE CAN IMPACT PRICING.

SUBTOTAL	3,600.00
TAX (0%)	0.00
TOTAL	\$3,600.00

Accepted By

Accepted Date

Shipping Information (PLEASE MARK ALL THAT APPLY):

- 
- ☐ Ship ASAP
 - ☐ Do NOT Ship Before Date ____/____/____
 - ☐ Lift Gate Fee Add. \$125.00
(REQUIRED IF NO FORKLIFT OR LOADING DOCK)
 - ☐ Residential / Non-Commercial Delivery Add. \$95.00*
 - ☐ Notification call prior to delivery Add \$40.00

APPROVED: _____

*** The term "residential/non-commercial" also includes apartments, places of worship, schools, pre-schools, day cares, camps, farms, public storage facilities, business operating within a private residence, and other such locations not generally recognized as commercial locations and shall apply to the entire premises.**



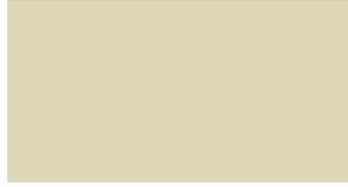
POWDER COATED



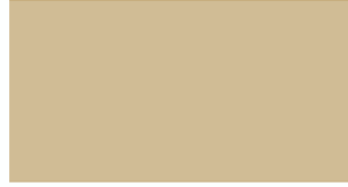
SHIPS IN 48 HOURS!



GRAPHITE 790 ⚡



ALMOND 300 ⚡



SAHARA BEIGE 450 ⚡



DESERT TAN 500 ⚡



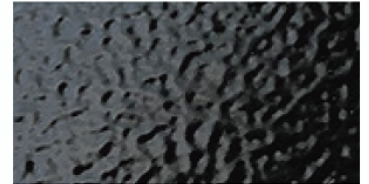
PLATINUM 715 ⚡



GREY DAWN 700 ⚡

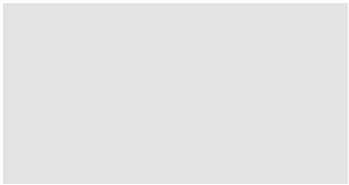


NICKEL SILVER 304 ⚡★



TEXTURED BLACK 091 ⚡

STANDARD SHIP



WHITE 149



FRENCH GREY 710



GRAPHITE 790



GUNMETAL GREY 750 ★



RED 650



NAVY BLUE 870



HUNTER GREEN 950



BLACK 021



DESERT SPECKLE 365 ★



PEPPER GRAY 765 ★



Express Ship is available in standard part sizes and in Overhead Braced style. Grey Dawn & Almond also available in Floor Mounted style. For non-standard part sizes or other bracing styles, refer to "Standard Ship" lead time.



Premium colors available at a slightly higher cost. **Nickel Silver:** Graffiti resistant clearcoat finish with glossy appearance. **Silver Sparkle:** Graffiti resistant clearcoat finish with light silver metallic sparkle. **Gunmetal Grey:** Metallic semi-shiny finish. **Desert Speckle, Pepper Gray, Coyote Granite, Ash Granite, Navy Grafix:** Multi-color speckle.



Swatches are a printed representation of the color. Please view an actual sample prior to making your final selection. Request samples via samples@metpar.com

NEW YORK

95 STATE STREET
WESTBURY, NY 11590
516-333-2600

TENNESSEE

3024 CHEROKEE ROAD
MORRISTOWN, TN 37814
516-333-2600

FLORIDA

7211 ANDERSON ROAD
TAMPA, FL 33634
516-333-2600

UTAH

5119 W 2100 South, West
Valley City, UT 84120
516-333-2600

CONTACT

WWW.METPAR.COM
SALES@METPAR.COM
516-333-2600

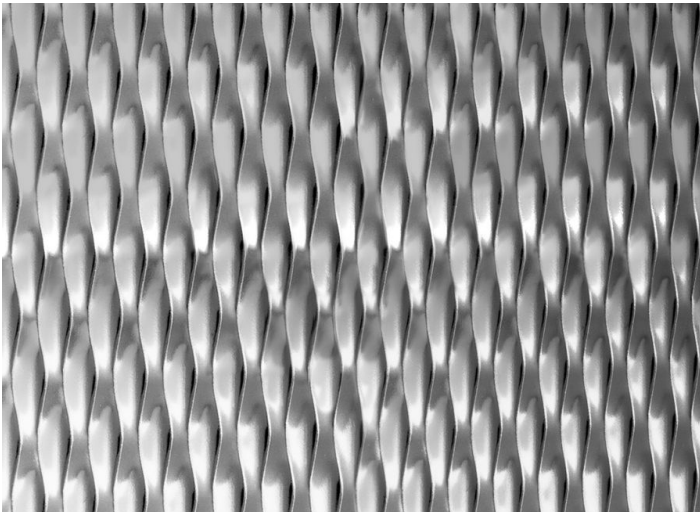


STAINLESS STEEL



STANDARD #4 SATIN BRUSHED ⚡

STANDARD SHIP



5SM DIAMOND TEXTURE ★



LEATHER-GRAIN TEXTURE ★

⚡ Express Ship is available in standard part sizes and in Overhead Braced style. For non-standard part sizes or other bracing styles, refer to "Standard Ship" lead time.

★ Textured metal finishes available at a slightly higher cost.

! Swatches are a printed representation of the color. Please view an actual sample prior to making your final selection. Request samples via samples@metpar.com

📍 **NEW YORK**
95 STATE STREET
WESTBURY, NY 11590
516-333-2600

📍 **TENNESSEE**
3024 CHEROKEE ROAD
MORRISTOWN, TN 37814
516-333-2600

📍 **FLORIDA**
7211 ANDERSON ROAD
TAMPA, FL 33634
516-333-2600

📍 **UTAH**
2180 SOUTH 300 WEST #104
SALT LAKE CITY, UT 84115
516-333-2600

✉ **CONTACT**
WWW.METPAR.COM
SALES@METPAR.COM
516-333-2600