

BOBRICK**Technical Data**

ClassicSeries®

High Pressure Laminate Partitions and Screens

1540

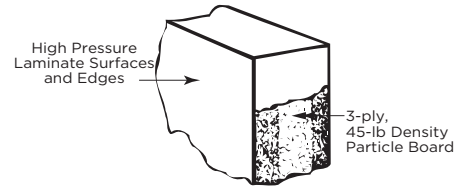
SERIES

Specify Product Application:

- ☐ Toilet Partitions
- ☐ With Outswing Door
- ☐ Urinal Screens

Specify Series Required:

- ☐ 1541 Series Floor-Anchored
- ☐ 1542 Series Overhead-Braced
- ☐ 1545 Series Wall-Hung Urinal Screens
- ☐ 1548 Series Ceiling-Hung for 8' (244cm) Ceiling or as required up to 10' (308cm) Ceiling.

**STANDARD-SIZE COMPONENTS:**

Stiles: For compartments - 3", 4", 5", 6", 7", 8"a, 10", 12", 16", 18", 20", or 24" (8, 10, 13, 15, 18, 20, 25, 30, 41, 46, 51, or 61cm) wide; for screens - 6" (15cm) wide. **Floor-anchored** - 69" (175cm) high; **overhead braced** - 82-5/16" (209cm) high; **ceiling-hung** - 83" (211cm) high for 8' (244cm) ceilings or as required up to 10' (305cm) ceilings.

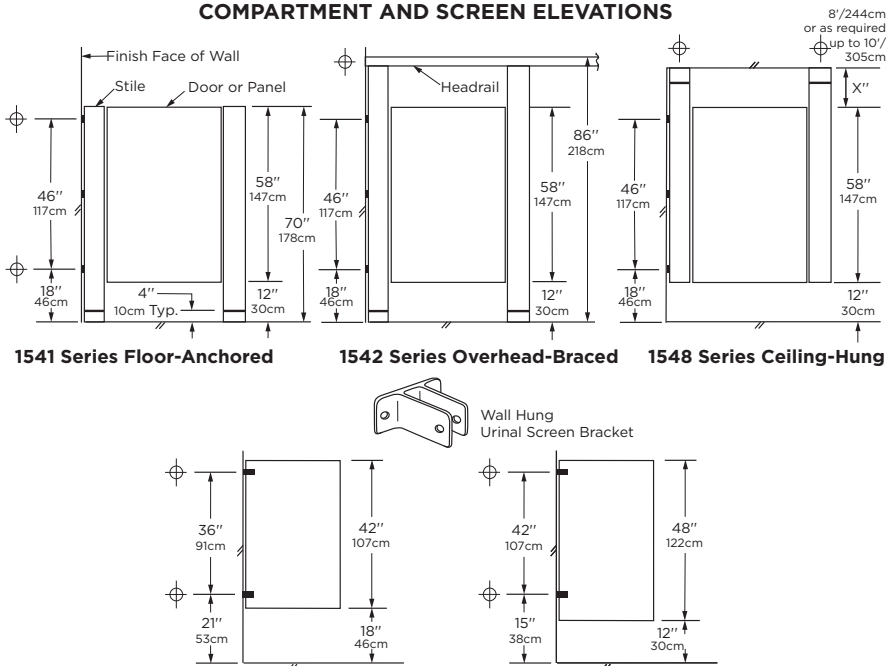
Doors: 58" (147cm) high. *Inswing doors* are standard for 22" to 37" (56-94cm) widths in whole-inch increments. *Outswing*^b doors are standard for 25" to 37" (64-94cm) widths in whole-inch increments.

Wall Posts: 1-1/2" wide, 58" high (4 x 147cm).

Panels: For Compartments - Up to 84" (213cm) wide; 58" (147cm) high. For wall-hung screens - 42" or 48" (107 or 122cm) high; 18" or 24" wide (46 or 61cm). For ceiling-hung and floor-anchored screens - 58" (147cm) high; 24", 36", 48", or 60" (61, 91, 122, or 152cm) wide.

^a Minimum 8" (20cm) wide stile recommended for ceiling-hung and flooranchored compartments.

^b Use outswing doors to comply with local codes requiring access for physically disabled persons.

COMPARTMENT AND SCREEN ELEVATIONS

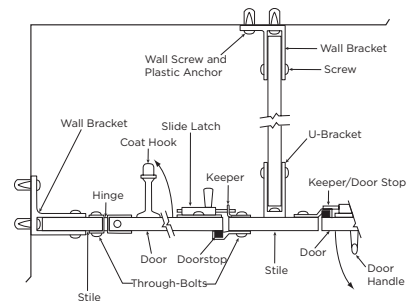
⊕ These mounting points require wall backing. For suggested backing methods, Bobrick Advisory Bulletins TB-32 for ceiling-hung installations and TB-46 for floor-anchored are available upon request.

TYPICAL HARDWARE DETAILS

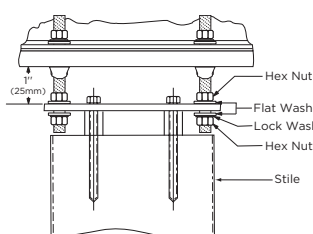
Standard gaps are provided at all walls and between components to allow for hardware attachment.

Wall gaps are standard 1/2" to 1"

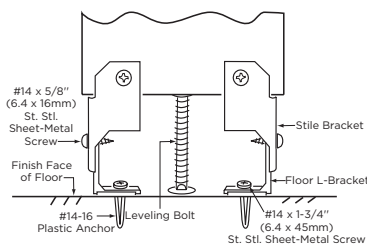
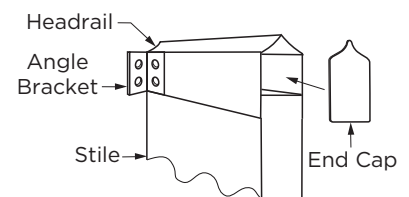
Through-Bolted, Bright-Polished, Chrome-Plated Zamak (standard on all compartments)

**TYPICAL INSTALLATION DETAILS**

Floor-Anchored or Ceiling-Hung Leveling Device (Ceiling Leveling Device Shown)



Overhead-Braced Floor Leveling Device

**Overhead-Bracing**

MATERIALS:

Stiles — 1" (25mm) finished thickness: 3-ply, 45-lb (20.4-kg) density, resin-impregnated particle board; surfaces and edges are .050" (1.3mm) thick, high-pressure plastic laminate with colored face sheets and matte finish.

Leveling Device — Overhead-Braced Series: 12-gauge (2.8mm), 3" x 1-1/4" (75 x 32mm) plated steel stile bracket factory installed to bottom of stile. Furnished with leveling bolt, shoe retainer, floor L-bracket, plastic anchor #14-16, #14 x 5/8" (M6.3 x 16mm) stainless steel sheet-metal screws and #14 x 1-3/4" (M6.3 x 45mm) stainless steel sheet-metal floor screws.

Leveling Device — Floor-Anchored or Ceiling-Hung: 3/8" x 1" (10 x 25mm) steel bar, zinc-chromate plated, bolted to stile using 6" x 3/8" (152 x 10mm) diameter carbon steel lag bolt. Furnished with 3/8" (10mm) diameter threaded rods, hex nuts, washers, spacer sleeve (ceiling-hung only), expansion shield and shoe retainer.

Shoe: — 18-8, Type-304, 22-gauge (0.8mm) stainless steel with satin finish; 4" (102mm) high. Patented one-piece shoe is open-ended, and may be mounted blind against wall using shoe clip fastener on wall side.

Panels and Doors — 1" (25mm) finished thickness: 3-ply, 45-lb (20.4-kg) density, resin-impregnated particle board; surfaces and edges are .050" (1.3mm) thick, high-pressure plastic laminate with colored face sheets and matte finish.

Headrail: (1542 Series Only): Extruded anodized aluminum. Enclosed construction with vandal-resistant sloping top.

Wallpost: 1-1/2" (38mm) x 1" (25mm) x 58" (147cm), 16 gauge (1.6mm) thick, 18-8, Type-304 stainless steel. Pre-drilled for door mounting hardware.

Door and Mounting Hardware — Hinges, door latches, door keepers, coat hooks, and mounting brackets are constructed of chrome-plated zamak. Toilet compartment door is locked from inside by sliding door latch into keeper. A locked compartment may be opened from outside by lifting door to disengage latch from keeper. Doorstop prevents inswing door from swinging out beyond stile; on outswing door, the doorstop/keeper prevents it from swinging in beyond stile. Combination coat hook and bumper reduces damage from door inside compartment.

INSTALLATION:

Bobrick installation instructions are packed with each shipment and are available also in advance on request.

Notes:

1. Where water from showers or hose-down cleaning comes in contact with partitions, Bobrick 1080 Series water-resistant, solid phenolic partitions are recommended.
2. Ceiling-hung partitions require structural members (not furnished by Bobrick) in ceiling. For suggested types of ceiling support systems, see Bobrick Advisory Bulletin TB-32.
3. Wall backing is required to secure the mounting brackets of panels, stiles, and wall posts. For suggested wall backing, see Bobrick Advisory Bulletin TB-46.
4. Floor-anchored stiles are furnished with expansion anchors and threaded rods. The expansion anchors require minimum 2" (50mm) penetration into minimum 3" (75mm) thick structural concrete.
5. Bobrick stainless steel partition-mounted washroom accessories are available for mounting in panels between two compartments. See current Bobrick Catalog for description of accessories. Cutouts in panels can be pre-cut for Bobrick models at factory if location and size of all cutouts and Bobrick model numbers are furnished at time of order.

GUARANTEE:

The Bobrick toilet partition panels, doors and stiles are warranted for a period of 2 years against breakage, corrosion, delaminating and defects in workmanship from the date of purchase for the periods set forth (this limited warranty is conditioned on the toilet partitions being properly installed, used and serviced). Spraying down or hosing HPL partitions voids warranty. Any products returned to Bobrick under this guarantee will be repaired or replaced at no charge.

SPECIFICATION:

High pressure laminate _____ (insert one: toilet partitions or urinal screens) shall be _____ (insert one: floor-anchored, ceiling-hung, overhead-braced or wall-hung). Stiles, panels, and doors shall have a finished thickness of 1" (25mm). Core of panels, doors, and stiles* shall be 3-ply, 45-lb (20.4-kg) density, resin-impregnated particle board. Stiles shall have a one-piece, Type-304, satin-finish stainless steel shoe that is 4" (102mm) high. Surfaces and edges shall be .050" (1.3mm) thick, high pressure laminate with colored face sheets and matte finish; bonding shall be done using adhesives especially formulated to prevent delamination from moisture and heat normally existing in public washrooms. Stiles, panels, and doors shall be _____ (insert color name and number from current Bobrick Catalog). Headrails for overhead-braced compartments shall be anodized aluminum with satin finish. All door hardware and mounting brackets shall be chrome-plated zamak**. Theft-resistant, one-way screws shall be furnished for all door hardware. Plated-steel Phillips screws shall be furnished for all mounting brackets. A coat hook shall be furnished for each door.

_____ (insert one: Toilet Partitions, Dressing Compartments, Urinal Screens) shall be _____ Series (insert series number) of Bobrick Washroom Equipment, Inc., Clifton Park, New York; Jackson, Tennessee; Los Angeles, California; Bobrick Washroom Equipment Company, Scarborough, Ontario; Bobrick Washroom Equipment Pty. Ltd., Australia; and Bobrick Washroom Equipment Limited, United Kingdom.

BOBRICK

CLASSIC

Series: 1545

Type: Screen Wall Hung

Layout: Urinal Screen

1 Of 1

COLOR SELECTION	DISTRIBUTOR	Note: Dimensions are in inches	
8906-58-Danish Maple	35205 - FRY SPECIALTY INC		
8906-58-Danish Maple	QUOTE#/S.O.# 9054653-1		
8906-58-Danish Maple	P.O.#	JOB NAME	17027325-1 (replacement parts)
	DATE 5/15/2024	ROOM	N/A

Toilet partition and urinal screen layout drawings are the sole, confidential and proprietary property of Bobrick Washroom Equipment, Inc. The layout drawings are custom designed and prepared exclusively for the quotation and manufacture of Bobrick toilet partitions and urinal screens for the distributor and job name stated on the layout. Reproduction or distribution of the layout drawings to other toilet partition manufacturers or other persons without the prior written permission of Bobrick Washroom Equipment is strictly prohibited.

FLOOR CLEARANCE 12

P

18"

PLAN VIEW

48"

12"

42"

15"

SIDE VIEW

MAKE 1 UNITS THUS

1. O.A.=OVERALL GAP, 1/2" FROM WALL TO PANEL
PLUS 1/4" PANEL TO STILE
NOTES FOR INSTALLER: UNLESS OTHERWISE SPECIFIED

S

 STILE

W

 WALLPOST

D

 DOOR

P

 PANEL

H

 HEADRAIL

B

 BENCH

EACH DRAWING MUST BE SIGNED APPROVED BEFORE FABRICATION CAN
BEGIN. FABRICATION WILL BE FROM FINAL APPROVED DRAWINGS ONLY.
PLEASE REVIEW CAREFULLY BEFORE SIGNING APPROVED.

APPROVED _____

BOBRICK COVER SHEET

Distributor: FRY SPECIALTY INC
Job Name: 17027325-1 (replacement parts)
Purchase Order:
Ship Date:

Quote Number: 9054653-1
Sales Order:
Job Number:
Net Weight: 348.77

SERIES	# OF PIECES	COLOR #	COLOR NAME	MANUFACTURER
1542	7	8906-58	Danish Maple	Formica
1545	1	8906-58	Danish Maple	Formica

BOBRICK COMPONENTS LIST
Sorted By ID#

Quote: 9054653-1
Dist.: FRY SPECIALTY INC
S.O.:

P.O.:

SERIES	COLOR	PART	SIZE	DRILLING DESCRIPTION	ROUTING (Gapping) DESCRIPTION	Qty	ID#	CUT MATERIAL
1542		Headrail	120	SKU: 1002377		1	H	
1542	#8906-58 Danish Maple	Stile	12 X 81 15/16 X 1	1542 LH I/S HINGE		2	S1	1542-81.937512
1542	#8906-58 Danish Maple	Stile	6 X 81 15/16 X 1	1542 NO DRILLING REQUIRED		1	S2	1542-81.937512
1542	#8906-58 Danish Maple	Door	23 7/16 X 58 X 1	1542 ND I/S DOOR		1	D1	1542-5812
1542	#8906-58 Danish Maple	Door	35 7/16 X 58 X 1	1542 ND I/S DOOR		1	D2	1542-5812
1542	#8906-58 Danish Maple	Panel	49 7/8 X 58 X 1			1	P1	1542-5812
1545	#8906-58 Danish Maple	Panel	17 5/8 X 48 X 1			1	P2	
1542	#8906-58 Danish Maple	Panel	33 7/8 X 58 X 1			1	P3	1542-5812

Bobrick Hardware Sheet

Quote: 9054653-1

Page: 1

S.O.:

P.O.:

Date: 5/15/2024

Dist.: FRY SPECIALTY INC

Job : 17027325-1 (replacement parts)

Ship Date: 04/15/2024

Part #	Description	Room Number										
		1	2	3	4	5	6	7	8	9	10	Total
1000418	Label-Handicapped Sym			1								1
1002038	Door Hdwe, I/S, Classic Series			2								2
1002177	Shoe 6"		1									1
1002180	Shoe 12"			2								2
1002185	Clip, Shoe		1	2								3
1002189	Screw, Shoe		2	4								6
1002350	Panel Packet-1540			1								1
1002360	1542 Headrail Hdwe Packet		1									1
1002365	Urinal Screen Packet (1540)	1										1
1002377	Headrail,120-1542 Series		1									1
1002394	Alcove Packet			1								1
1002413	Shoe Retainer (1542)		2	4								6
1002416	Floor Anchor Packet-1540Series		1	2								3
1002422	Leveling Bolt		1	2								3
1002484	Driver Kit For Torx Screws	1										1
1002589	Silicone Grease	1										1
1002954	Chrome Door Handle			1								1
1040-306	T-15 Torx Bit Tamper Proof, 2" long	1										1
1045-69	Instruction book, Rev 10/06/2020	1										1
1540-69	Instruction Sheet, 13 pg bk.Rev 7/26/22	1										1
1540-98	Screw Packet, Inline/Alcove Panel Chrome			1								1

Bobrick Hardware Sheet

Quote: 9054653-1

Page: 2

S.O.:

P.O.:

Date: 5/15/2024

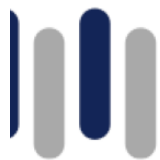
Dist.: FRY SPECIALTY INC

Job : 17027325-1 (replacement parts)

Ship Date: 04/15/2024

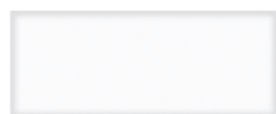
Rooms

- 1 - N/A
- 2 - Mens
- 3 - Womens

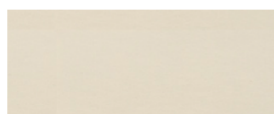


TOILET
PARTITIONS.COM

HIGH PRESSURE LAMINATE (HPL) STANDARD COLORS & PATTERNS



Designer White
D354-60



Natural Almond
D30-60



Beige
1530-60



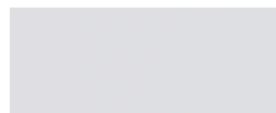
Otter
3202-58



Shadow
D96-60



Slate Grey
D91-60



Moonstone
7872-58



Grey
1500-60



Platinum
D315-60



Mouse
928-58



Terril
2297-58



Black
1595-60



White Carrara
4924-38



Neutral Weft
5875-58



Flax Gauze
7708-58



Desert Zephyr
4841-60



Cardboard Solidz
7813-58



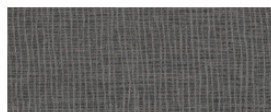
Pewter Mesh
4878-38



Sheer Mesh
4876-38



Classic Linen
4943-38



Citadel Warp
5882-58



Silver Galaxy Slate
9528-58



White Ash
8841-58



Danish Maple
8906-58



Millennium Oak
5887-58



Bleached Legno
8845-58



Smoky Brown Pear
5488-58



Blackened Steel
8918-58

PANELS OVER 60" WIDE MAY REQUIRE SPLICING (OR INLINE PILASTERS).