

Washroom Equipment Job Summary



Quote No: 9086636-1

Customer:

Contact:

Job Name: 17029646

Building Type: Stock

Prepared By: Anna Ciccarelli

Last Revised By: christinaziccardi

Item	Description	Qty
1081	1081 SERIES TC PER LAYOUT	1

Grand Total: 1,410.08

**BASED ON (1) SHIPMENT TO 93033
6-7 BUSINESS DAY PRODUCTION LEAD TIME**

Quantities and descriptions are not guaranteed to agree with plans and specifications. Please compare them with actual requirements to avoid errors. Sales or Use Tax of any kind is not included in any price shown above.

Models quoted using crossover guide are similar in function. Bobrick does not guarantee descriptions to agree with plans and specifications. Please compare with actual requirements to avoid error.

Partition volume discount pricing is based on each qualifying color on a single shipment.

The Quote is subject to your acceptance within (30) days. Prices are based on current costs of labor and material, and are firm for orders authorizing immediate shipment. If future shipment is requested, prices will be subject to escalation to cover costs at the time of requested shipment.

At the time of shipment of this order, if your firm warrants open credit by Bobrick, the Terms of Sale would be Net 30 Days from Date of Invoice.

Freight costs are estimates only. Actual Freight is subject to change.

Shipping Information (PLEASE MARK ALL THAT APPLY):

- 
- ☐ Ship ASAP
 - ☐ Do NOT Ship Before Date ____/____/____
 - ☐ Lift Gate Fee Add. \$125.00
 - ☐ **(REQUIRED IF NO FORKLIFT OR LOADING DOCK)**
 - ☐ Residential / Non-Commercial Delivery Add. \$95.00*
 - ☐ Notification call prior to delivery Add \$40.00

APPROVED: _____

* The term "residential/non-commercial" also includes apartments, places of worship, schools, pre-schools, day cares, camps, farms, public storage facilities, business operating within a private residence, and other such locations not generally recognized as commercial locations and shall apply to the entire premises.

BOBRICK

DURALINE

Series: 1081

Type: Floor Anchored

Layout: Right Alcove Recessed Inl/Perp 5 stall

1 Of 3

HEIGHT	COLOR SELECTION	DISTRIBUTOR	35205 - FRY SPECIALTY INC	Note: Dimensions are in inches
PANEL 58	4830-60-Satin Stainless	QUOTE#/S.O.#	9061828-1/IBUS272876	
STILE 69	4830-60-Satin Stainless	P.O.#	0-20446	
DOOR 58	4830-60-Satin Stainless	DATE	5/13/2024	

JOB NAME 17029646

ROOM Womens

Toilet partition and urinal screen layout drawings are the sole, confidential and proprietary property of Bobrick Washroom Equipment, Inc. The layout drawings are custom designed and prepared exclusively for the quotation and manufacture of Bobrick toilet partitions and urinal screens for the distributor and job name stated on the layout. Reproduction or distribution of the layout drawings to other toilet partition manufacturers or other persons without the prior written permission of Bobrick Washroom Equipment is strictly prohibited.

FLOOR CLEARANCE 12

PANEL
NEEDED
HERE

(PLEASE
INCLUDE
ALL
NECESSA
RY
HARDWAR
E,
HEADRAIL
ETC.)-->

60"

32"

32"

32"

33"

33 1/2"

60"

3 1/4"

4 3/4"

4 3/4"

3 1/4"

4 3/4"

4 3/4"

3 1/4"

5 3/4"

6"

5 3/4"

7"

3 1/4"

8"

24"

24"

8"

24"

8"

24"

3 3/4"

24"

3 3/8"

187 3/4"

57 1/4"

107 3/8"

6" PILASTER NEEDED INSTEAD OF 4" REC'D FOR S7

S7

D5

D4

D3

S4

S3

S2

D1

S1

P4

P3

P2

P1

36"

3"

3/4"

1. O.A.=OVERALL GAP, 1/2" FROM WALL TO PANEL PLUS 1/4" PANEL TO STILE. NOTES FOR INSTALLER: UNLESS OTHERWISE SPECIFIED

MAKE 1 UNITS THUS

EACH DRAWING MUST BE SIGNED APPROVED BEFORE FABRICATION CAN BEGIN. FABRICATION WILL BE FROM FINAL APPROVED DRAWINGS ONLY. PLEASE REVIEW CAREFULLY BEFORE SIGNING APPROVED.

APPROVED

BOBRICK

DURALINE

Series: 1081

Type: Floor Anchored

Layout: Left Alcove Corner Inl/Perp 3 stall

2 Of 3

HEIGHT		COLOR SELECTION	
PANEL 58	4830-60-Satin Stainless	DISTRIBUTOR 35205 - FRY SPECIALTY INC	Note: Dimensions are in inches
STILE 69	4830-60-Satin Stainless	QUOTE#/S.O.# 9061828-1/IBUS272876	
DOOR 58	4830-60-Satin Stainless	P.O.# 0-20446	
		JOB NAME 17029646	
		ROOM Mens	
		DATE 5/13/2024	

Toilet partition and urinal screen layout drawings are the sole, confidential and proprietary property of Bobrick Washroom Equipment, Inc. The layout drawings are custom designed and prepared exclusively for the quotation and manufacture of Bobrick toilet partitions and urinal screens for the distributor and job name stated on the layout. Reproduction or distribution of the layout drawings to other toilet partition manufacturers or other persons without the prior written permission of Bobrick Washroom Equipment is strictly prohibited.

FLOOR CLEARANCE 12

1. O.A.=OVERALL GAP .1/2" FROM WALL TO PANEL PLUS 1/4" PANEL TO STILE
NOTES FOR INSTALLER: UNLESS OTHERWISE SPECIFIED

MAKE 1 UNITS THUS

EACH DRAWING MUST BE SIGNED APPROVED BEFORE FABRICATION CAN BEGIN. FABRICATION WILL BE FROM FINAL APPROVED DRAWINGS ONLY. PLEASE REVIEW CAREFULLY BEFORE SIGNING APPROVED.

APPROVED

Quote: 9086636-1
Dist.: FRY SPECIALTY INC
S.O.:

P.O.:

BOBRICK COMPONENTS LIST
Sorted By ID#

SERIES	COLOR	PART	SIZE	DRILLING DESCRIPTION	ROUTING (Gaping) DESCRIPTION	Qty	ID#	CUT MATERIAL
1081	#4830-60 Satin Stainless	Stile	6 X 69 X 3/4	1081 NO DRILLING REQUIRED		1	S1	1081-6912
1081	#4830-60 Satin Stainless	Stile	3 X 69 X 3/4	1081 NO DRILLING REQUIRED		1	S2	1081-6912
1081	#4830-60 Satin Stainless	Stile	16 X 69 X 3/4	1081 LH I/S HINGE		1	S3	1081-6912
1081	#4830-60 Satin Stainless	Panel	58 1/2 X 58 X 1/2			1	P1	1081-5812

Component Hardware

Qty	Item#	Description
3	1000351	L Brkt-Pan/Stile (Alcoves)
3	1000974	Y Bracket
3	1000975	F Brkt.Int.Pnl To Wall 1/2"
6	1002495	Torx Screw-#12 X 2 Sht Mtl, 25 pack
15	1002499	Torx Screw-#12 X 7/16 Sht Mtl, 25 pack

Component Hardware

Qty	Item#	Description
3	1000974	Y Bracket
1	1002177	Shoe 6"
1	1002185	Clip, Shoe
2	1002189	Screw, Shoe
6	1002495	Torx Screw-#12 X 2 Sht Mtl, 25 pack
12	1002499	Torx Screw-#12 X 7/16 Sht Mtl, 25 pack
2	1002701	Floor Anchor Pkt,Single-1080

Component Hardware

Qty	Item#	Description
1	1002175	Shoe 3"
1	1002185	Clip, Shoe
2	1002189	Screw, Shoe
1	1002701	Floor Anchor Pkt,Single-1080

Component Hardware

Qty	Item#	Description
1	1002181	Shoe 16"
1	1002185	Clip, Shoe
2	1002189	Screw, Shoe
2	1002701	Floor Anchor Pkt,Single-1080

Component Hardware

Qty	Item#	Description
1	1002175	Shoe 3"
1	1002185	Clip, Shoe
2	1002189	Screw, Shoe
1	1002701	Floor Anchor Pkt,Single-1080

Component Hardware

Qty	Item#	Description
3	1000974	Y Bracket
1	1002177	Shoe 6"
1	1002185	Clip, Shoe
2	1002189	Screw, Shoe
6	1002495	Torx Screw-#12 X 2 Sht Mtl, 25 pack
12	1002499	Torx Screw-#12 X 7/16 Sht Mtl, 25 pack
2	1002701	Floor Anchor Pkt,Single-1080

Component Hardware

Qty	Item#	Description
3	1000351	L Brkt-Pan/Stile (Alcoves)
3	1000974	Y Bracket
3	1000975	F Brkt.Int.Pnl To Wall 1/2"
6	1002495	Torx Screw-#12 X 2 Sht Mtl, 25 pack
15	1002499	Torx Screw-#12 X 7/16 Sht Mtl, 25 pack



BUILDING VALUE SINCE 1906



COMPACT GRADE LAMINATE (CGL) STANDARD COLORS & PATTERNS

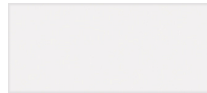
Single Piece Panels Available Up To 5'



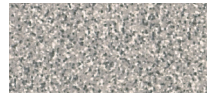
Satin Stainless with
Dove Grey Core
4830-SC-60SC*



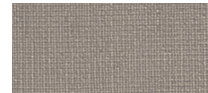
Satin Stainless with
Black Core
4830-60



White
949-58



Grey Grit
P-886-CA



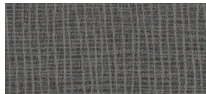
Pewter Mesh
4878-60



Earth
5342-58



Evening Tigris
4674-60



Citadel Warp
5882-58



Navy Grafix
7018-58



Graphite Grafix
515-58



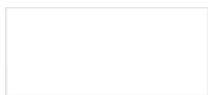
Black Stone
P-500-CA



Black
1595-60

*Wilsonart® SOLICOR™ is a specialty laminate with a solid color core to match the surface. Color upcharge premium applies.

Single Piece Panels Available Up To 6'**



Ice White
410-SEI



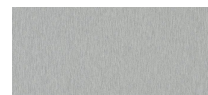
Sand
414-SEI



Light Grey
478-SEI



Pearl Grey
475-SEI



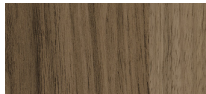
Brushed Aluminum
0328-FH



Charcoal
0077-FH

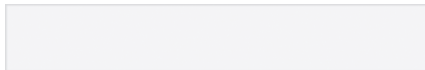


Silvretta
0229-FH

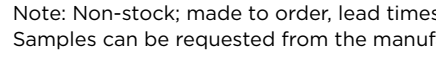


Cello
0811-FH

Additional Colors: Solid Color CGL - Wilsonart® Solicor™ Colors & Patterns*



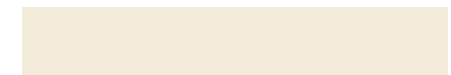
Designer White
D354-SC-60SC (White Core)



Dove Grey
D92-SC-60SC



Khaki Brown
D50-SC-60SC



Natural Almond
D30-SC-60SC



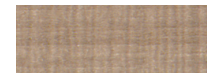
Silver Oak Ply
8203-SC-60SC



Silver Alchemy
4860-SC-60SC



High Line
7970-SC-60SC



Park Elm
7967-SC-60SC



Field Elm
7999-SC-60SC



Flax Linen
4990-SC-60SC



Pressed Linen
4991-SC-60SC



Pearl Soapstone
4886-SC-60SC



Phantom Ecru
8212-SC-60SC



Tan Soapstone
4887-SC-60SC



Calacatta Oro
4981-SC-60SC

*Wilsonart® SOLICOR™ is a specialty laminate with a solid color core to match the surface. Color upcharge premium applies.

**Standard color by ABET LAMINATI and FUNDERMAX® allows for single panel width up to 72", eliminating use of additional hardware. Meets Class A fire rating without upcharge.

Hundreds of additional CGL colors are available from our partners; additional lead time will apply. Please consult with ABET LAMINATI®, ARBORITE®, FORMICA®, Wilsonart® or FUNDERMAX® for color options. Non-stock Abet Laminati or FUNDERMAX colors carry a significant lead time of 10-14 weeks.

ABET LAMINATI is a trademark of ABET Inc. and ABET LAMINATI S.p.A. ARBORITE and Wilsonart are registered trademarks of Wilsonart Engineered Surfaces and Wilsonart International, Inc. SOLICOR is a trademark of Wilsonart Engineered Surfaces and Wilsonart International, Inc. FORMICA and the FORMICA Anvil logo are registered trademarks of The Diller Corporation. © 2015 The Diller Corporation. FUNDERMAX is a registered trademark of FUNDERMAX GmbH.

