

Quote #17029959-1

Date: 05/06/2024

- ✓ Standard Freight Included: 78238 Zip Code
- ✓ All Hardware and Anchors Included
- ✓ Doors, Dividers, Pilasters Included



Powder Coat

3 year warranty

Delivered in 3-6 business days (Quick Ship colors only);
Standard colors in 12-18 business days

\$4,494.27

Price includes materials and hardware

[Product Info](#) | [Color Chart](#)



Plastic Laminate

2 year warranty

Delivered in 5-10 business days

\$5,597.52

Price includes materials and hardware

[Product Info](#) | [Color Chart](#)



Solid Plastic

25 year warranty

Delivered in 6-9 business days

\$7,795.20

Price includes materials and hardware

[Product Info](#) | [Color Chart](#)



Stainless Steel

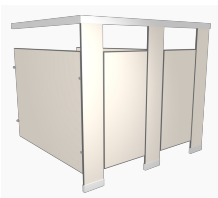
5 year warranty

Delivered in 3-6 business days

\$8,494.91

Price includes materials and hardware

[Product Info](#) | [Color Chart](#)



Phenolic

25 year warranty

Delivered in 6-10 business days

\$8,762.67

Price includes materials and hardware

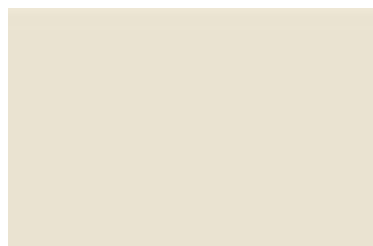
[Product Info](#) | [Color Chart](#)

SOLID PLASTIC COLOR CARD

*Delivered in 6-9 Business Days



213 BONE



223 LINEN



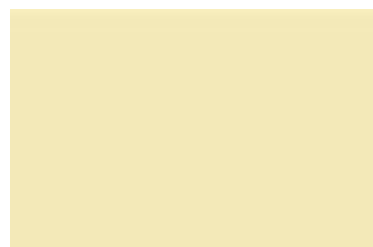
239 GRAY



215 BURGUNDY



218 FOSSIL



238 ALMOND



231 SLATE



212 BLUEBERRY



222 HUNTER



225 MOCHA



211 BLACK



227 PAISLEY




217 CANYON GRANITE



219 FROST GRANITE

Drawing Notes

- Compartment widths on drawings are shown at center line of panels.
- Compartment depths on drawings are shown from front face of pilaster to finished wall.
- Cut headrail in field to suit (if applicable).
- "X" on drawings indicates that backing is required.
- Fabrication will not commence until approval has been received.
- Material supplied will conform to the dimensions indicated on drawings.
- Scale of drawings - none.
-  on drawings indicates location of pilaster reinforcing channel(s).

Project Title Robert Daughtery

Created By Javier Solis

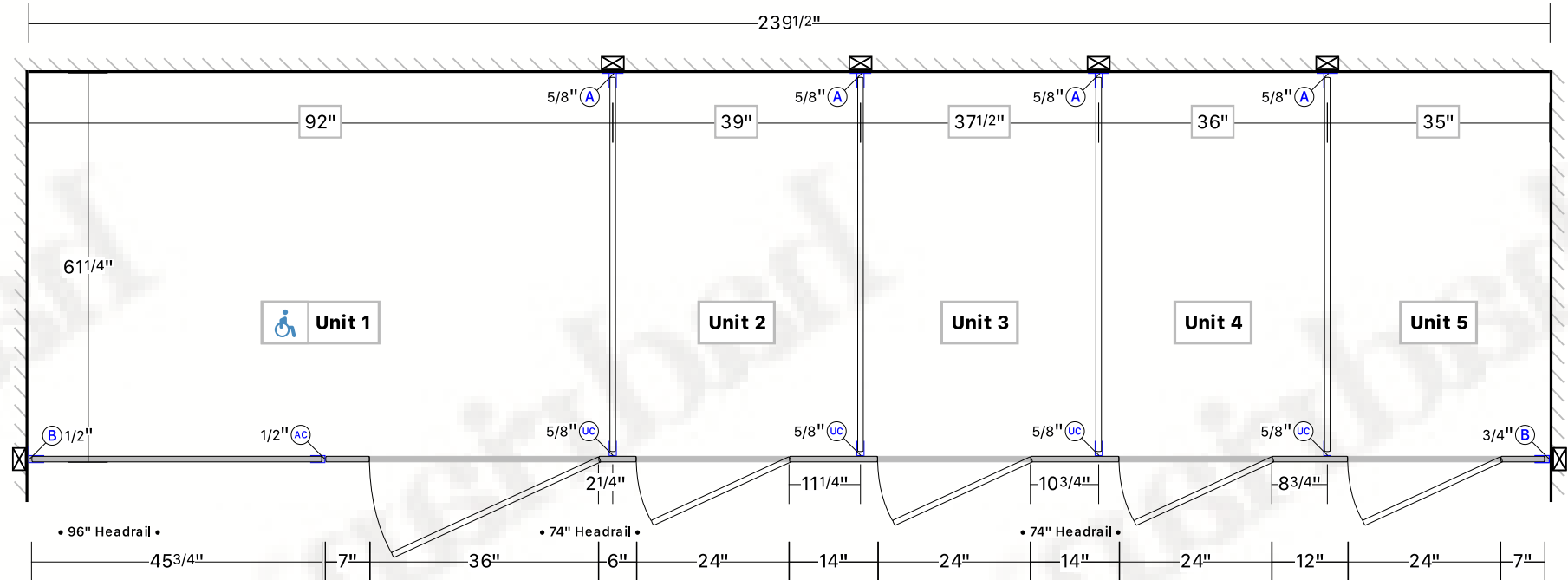
Last edit date 05/07/2024

Distributor Fry Specialty Inc.

Drawing Title women's

Date Printed 05/07/2024

Quote Number Q0740943.001



LEGEND

(A) H Bracket

(AC) Alcove Channel

(B) F Bracket

(UC) U Channel

Unit

Panel/Door height = 55"
Panel/Door AFF = 14"

Product Toilet Partitions

Series Standard

Sightline Option None

Material Solid Plastic

AFF 14"

Hinge Wrap

Finish TBA - Color TBA

Hardware Aluminum Channels & Brackets

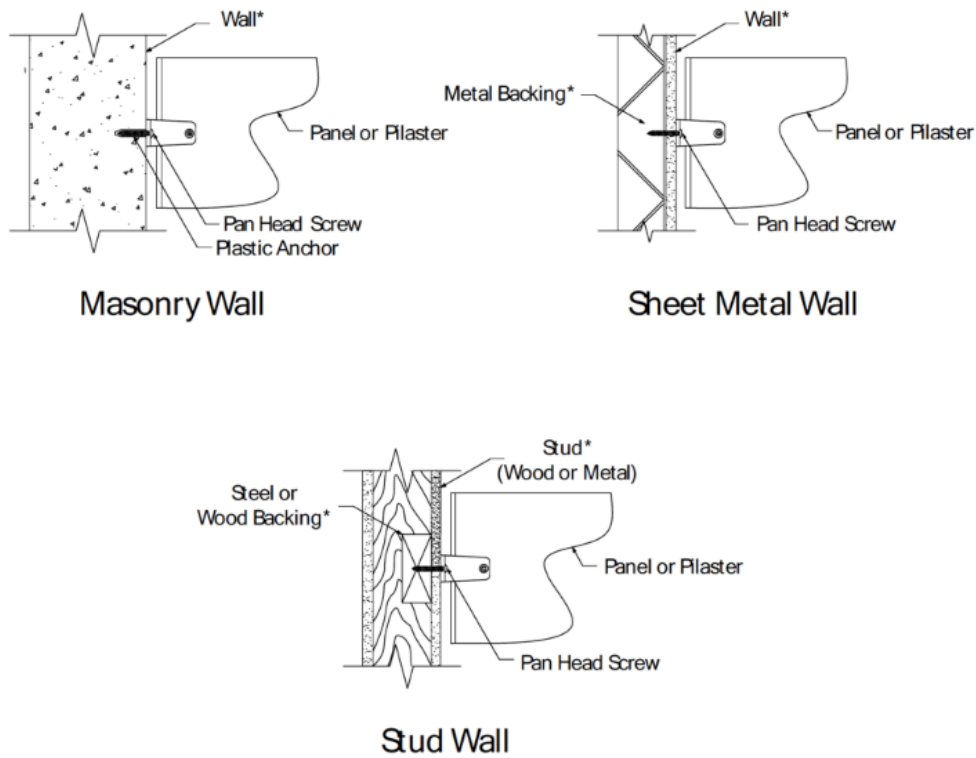
Latch Aluminum

Partition Headrail Braced

Options None

Recommended Methods for Attaching to a Wall

The details below demonstrate the recommended methods for attaching panels and pilasters to common wall types. Other wall types may be encountered. In all cases, proper wall backing is required to achieve a successful toilet partition installation.



*Not Supplied by Hadrian

Material Specification

HEADRAIL BRACED - SOLID PLASTIC TOILET PARTITIONS - STANDARD

1.01 Construction Features

Doors, panels and pilasters shall be certified Class B polyethylene solid plastic. The material shall contain no foaming agents, which can cause the formation of air pockets. The self-lubricating surface is resistant to marking and can be maintained effectively with ordinary household cleaners. Material is ideal for toilet partition installations, especially in high abuse and high moisture environments.

1.02 Doors

Shall be (25mm) 1" thick by (1397mm) 55" high and straight cut with fine radius edges.

1.03 Panels

Shall be (25mm) 1" thick by (1397mm) 55" high and straight cut with fine radius edges.

1.04 Pilasters

Shall be (25mm) 1" thick by (2083mm) 82" high and straight cut with fine radius edges.

1.05 Headrail

Shall be 32mm (1.25") by 44mm (1.75") extruded anodized aluminum with anti-grip design. Wall thickness to be 1.5mm (0.060") and shall be securely attached to wall and pilasters with manufacturer's fittings in such a way as to make a rigid installation. All joints in headrails shall be made at a pilaster.

1.06 Pilaster Fastening Method

Pilasters shall be securely and rigidly fastened to the floor with 3" (76mm) high stainless steel anchor shoes. Three heavy-duty aluminum brackets shall be used at the pilaster to wall connection.

1.07 Hardware and Fittings

Doors are installed with 1/8" thick heavy extruded clear anodized aluminum hinges, which wrap around both the door and pilaster. Hinges are fastened to door and pilaster with tamper-proof 6-lobe security head stainless steel thru-bolts and fastened to the edge of the door and pilaster with a #10 x 1" screw. Top hinges have adjustable nylon cams.

Strike-keeper and throw latch are extruded clear anodized aluminum.

The combined stop and keeper shall have a 19mm (0.75") diameter bumper locked in place. Finish to match other hardware items.

Doors shall be fitted with a zinc die cast, #4 brushed combined coat hook and bumper. Fasteners are theft-proof 6-lobe security head stainless steel screws. Hadrian door hardware meets ADA and Canadian barrier-free requirements.

Three heavy-duty aluminum brackets are used at the panel to wall connection and a full-height continuous aluminum channel is used at the panel to pilaster connection.

1.08 Finish

Doors, panels and pilasters shall be certified Class B polyethylene with uniform color throughout. Color shall be as selected from Hadrian's color card.

This specification applies to room(s): Mens, women's

WALL MOUNTED AND FLOOR MOUNTED - SOLID PLASTIC URINAL SCREENS

1.01 Construction

Screens shall be certified CLASS B polyethylene. The material shall contain no foaming agents, which can cause the formation of air pockets. The self-lubricating surface is resistant to marking and can be maintained effectively with ordinary household cleaners. Material is ideal for toilet partition installations, especially in high abuse and high moisture environments.

1.02 Wall Mounted Screens

Screens shall be 25mm (1") thick, straight cut with fine radius edges. Screens must be 457mm (18") or 610mm (24") deep by 1219mm (48") high and anchored into the wall approximately 305mm (12") off the floor with two brackets spaced 902mm (35.5") apart.

1.03 Floor Mounted Screens

Screens shall be 25mm (1") thick, straight cut with fine radius edges. Screens must be 610mm (24") to 1168mm (46") deep by 1397mm (55") high and anchored into the wall approximately 356mm (14") off the floor with two brackets spaced 1156mm (45.5") apart. Pilasters shall be securely and rigidly fastened to the floor with 3" (76mm) high stainless steel anchor shoes.

1.04 Hardware & Fittings

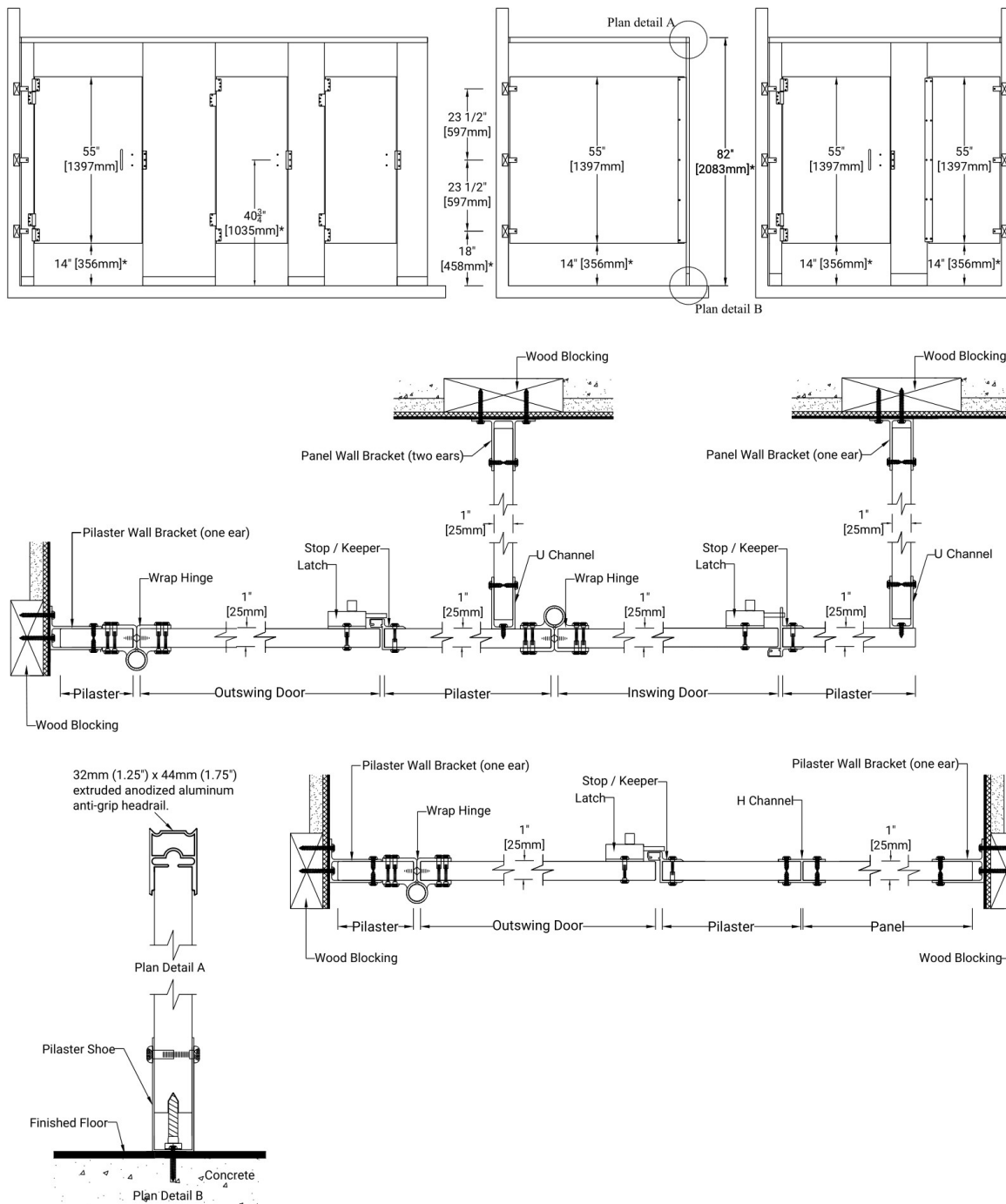
Wall mounted and floor mounted screens shall be fastened to the wall with heavy-duty aluminum brackets. Floor mounted screens shall be fastened to the supporting pilaster with a full height continuous aluminum "U" channel. Fasteners are theft-proof 6-lobe security head stainless steel screws.

1.05 Finish

Screens shall be certified CLASS B polyethylene with uniform color throughout. Color shall be as selected from Hadrian's color card.

This specification applies to room(s): Mens

Plastic Toilet Partitions
Standard Series - Headrail Braced - 14" [356mm] AFF
Aluminum Channels & Brackets - Aluminum Surface Latch & Wrap Hinge



Important Notes:

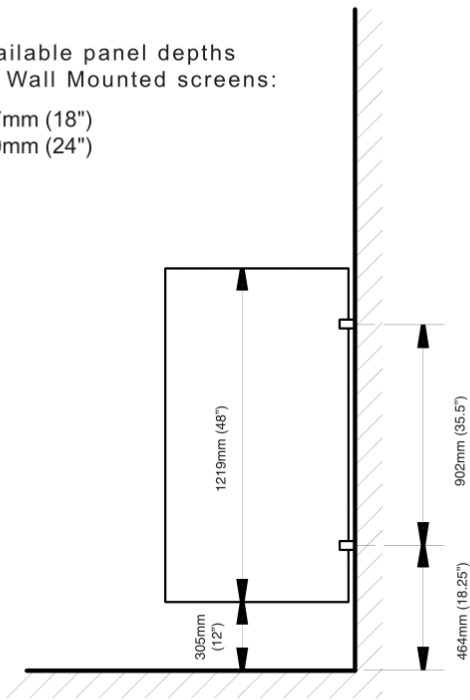
Refer to final drawings for wood blocking information. Wood blocking is critical to ensure a rigid installation. See material specifications for material and hardware finishes.

*Above finish floor dimensions may vary due to floor level and cam position

WALL MOUNTED AND FLOOR MOUNTED - SOLID PLASTIC URINAL SCREENS

Available panel depths
for Wall Mounted screens:

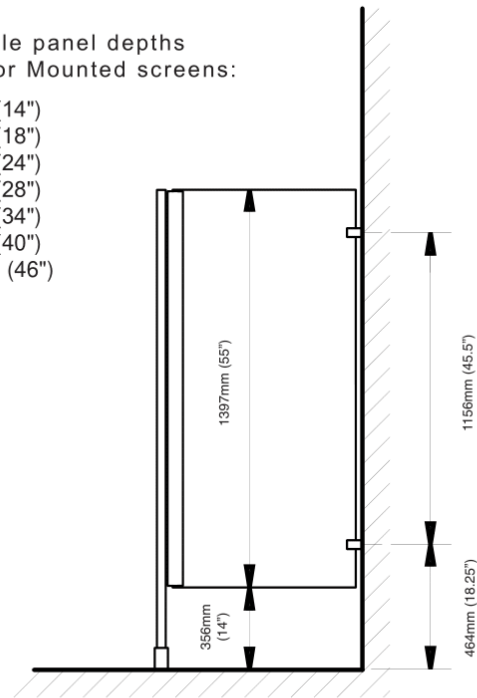
457mm (18")
610mm (24")



Wall Mounted Screen

Available panel depths
for Floor Mounted screens:

356mm (14")
457mm (18")
610mm (24")
711mm (28")
564mm (34")
102mm (40")
1168mm (46")



Floor Mounted Screen

Important Notes:

Refer to final drawings for wood blocking information.
Wood blocking is critical to ensure a rigid installation.

Warranty Information

Hadrian Manufacturing Inc. ("Hadrian") provides the following warranty with respect to the Hadrian product(s) supplied for the project indicated above.

Subject to the terms set out herein, the product(s) are warranted against defects in material and workmanship from the date of receipt by the authorized Hadrian distributor for the warranty period outlined below:

Powder Coated Toilet Partitions	3 years
Stainless Steel Toilet Partitions	5 years
Solid Plastic Toilet Partitions	25 years
Phenolic Black Core Toilet Partitions	25 years
Emperor (corridor) Lockers	2 years
Gladiator (athletic) Lockers	5 years
Replacement Front Lockers	2 years
Boot Racks	1 year

The warranty is for Hadrian material only and excludes damages caused by installation errors, vandalism, improper usage, improper maintenance, exposure to harsh environments or chemicals (such as chlorine, bromine, etc.) or failure of the building structure to adequately support the product. Site preparations (i.e. wood blocking, etc.) must meet final drawing specifications and Hadrian's recommended maintenance procedure must be followed.

The exclusive remedy under this warranty shall, at Hadrian's discretion, be replacement or repair of the defective material. Hadrian will not pay any removal, installation or other labor costs associated with the repair or replacement. Replacement material will be warranted for the unused portion of the original warranty period.

No warranty of merchantability or fitness for a particular purpose is made or implied. In no event shall Hadrian be liable for any other costs or damages, including loss of profit, loss of revenue, indirect, incidental, special or consequential damages howsoever arising, whether under warranty, contract, statute, tort, equity or otherwise.

This warranty extends only to the original authorized Hadrian customer and is non-transferable. Warranty claims must be made during the applicable warranty period and initiated by contacting Hadrian at the following coordinates: USA: 440-942-9118 / CANADA: 905-333-0300.

The foregoing constitutes the entire warranty given by Hadrian and no one is authorized to change or expand this warranty on behalf of Hadrian.



Hadrian Manufacturing Inc., 965 Syscon Road, Burlington, ON, L7L 5S3 T: 905-333-0300 F: 905-333-1841
Hadrian Manufacturing Inc., 2550 - 61 Avenue SE, Calgary, AB, T2C 4V2 T: 905-333-0300 F: 905-333-1841
Hadrian Inc., 7420 Clover Avenue, Mentor, OH, 44060 T: 440-942-9118 F: 440-942-9618
Hadrian Inc., 3602 West Washington Street, Suite 200, Phoenix, AZ, 85009 T: 440-942-9118 F: 440-942-9618

08/2023

Maintenance Procedure

FOR SOLID PLASTIC

MAINTENANCE OF YOUR TOILET PARTITIONS SHOULD BE A PART OF YOUR REGULAR BUILDING PREVENTIVE MAINTENANCE PROCEDURE

1. Tighten any screws that have become loose due to vibrational forces or attempted vandalism.
2. Be sure the surfaces are dry after being cleaned and rinsed with clear water (when required).
3. Partitions exposed to severe humidity should be washed and dried as needed.
4. Periodically, remove any dirt, grime or foreign matter with a soft cloth.
5. Where surfaces reveal spotting resulting from hand perspiration, soil, or grease, a thorough cleaning with warm water and a mild detergent (i.e. Ivory Soap), followed by rinsing, and removal of excess moisture, will renew the clean even surface, providing a pleasant sanitary appearance. (Use of cleaning agents containing abrasives such as household cleaning powder, steel wool, and harsh detergents or acids ARE NOT RECOMMENDED).
6. For areas of stubborn graffiti, commercial graffiti removers can be used.
7. To maintain the brilliance of hardware, these components can be periodically improved by an application of non-abrasive cleaner with a damp cloth.
8. If your partitions have a continuous hinge, regular application of an LPS II or an industrial type, non-drying lubricant is recommended.
9. The appearance of scratches may be minimized by burnishing the blemish with a smooth, rounded object such as a spoon. For best results, apply slight pressure in a parallel motion to the scratch.

LEED V4 CREDIT INFORMATION

Building Product Disclosure and Optimization – Sourcing of Raw Materials

Hadrian products can contribute toward Option 2. Leadership Extraction Practices (1 Point)

Use products that meet at least one of the responsible extraction criteria below for at least 25%, by cost, of the total value of permanently installed building products in the project.

- **Recycled content.** Recycled content is the sum of post-consumer recycled content plus one half the Pre-consumer recycled content, based on cost. Products meeting recycled content criteria are valued at 100% of their cost for the purposes of credit achievement calculation.

For credit achievement calculation, products sourced (extracted, manufactured, and purchased) within 100 miles (160 km) of the project site are valued at 200% of their base contributing cost. For credit achievement calculation, the base contributing cost of individual products compliant with multiple responsible extraction criteria is not permitted to exceed 100% its total actual cost (before regional multipliers) and double counting of single product components compliant with multiple responsible extraction criteria is not permitted and in no case is a product permitted to contribute more than 200% of its total actual cost.

Hadrian's Recycled Content Documentation

LEED CATEGORY	DESCRIPTION	POWDER COATED TOILET PARTITIONS	STAINLESS STEEL TOILET PARTITIONS	SOLID PLASTIC TOILET PARTITIONS	LOCKERS BOOT RACKS
				CLASSB	
Recycled content	Post-consumer	36%	76%	0%	36%
	Pre-consumer	14%	15%	Minimum of 30%	14%
	In addition to the recycled content of the material above, the honeycomb / verticel core of powder coated toilet partitions, stainless steel toilet partitions and lockers contains 9% post-consumer and 9% pre-consumer recycled content.				
	Product weight Distribution	92% Steel 8% Honeycomb	92% Steel 8% Verticel	N/A	99% Steel 1% Honeycomb
Regional materials	Manufacturing / final assembly location	Burlington, ON	Burlington, ON	Mentor, ON	Calgary, AB
	Material extraction / harvest location	Material extraction harvest locations are not available.			

Hadrian's packaging materials (hardware boxes and locker end-caps) are made from 100% recycled material and our triple-ply, corrugated shipping container (USA) is 100% recyclable.

VOLATILE ORGANIC COMPOUNDS (VOCs)

Hadrian products (metal and solid plastic) do not emit volatile organic compounds. Our powder coating process utilizes environmentally friendly technology as there is virtually no waste, energy consumption is low, and there are no solvent emissions.

UREA FORMALDEHYDE

Hadrian products do not contain urea formaldehyde.

BUILDING PRODUCT DISCLOSURE AND OPTIMIZATION – MATERIAL INGREDIENTS

Option 1. Leadership Extraction Practices (1 Point)

Use at least 20 different permanently installed products from at least five different manufacturers that use any of the following programs to demonstrate the chemical inventory of the product to at least 0.1% (1,000 ppm).

- Health Product Declaration. The end-use product has a published, complete Health Product Declaration with full disclosure of known hazards in compliance with the Health Product Declaration Open Standard.

Hadrian's Contribution – Hadrian is working toward a Health Product Declaration (HPD). Release date TBA.