

# Quote # 17032898

Date: Oct. 3, 2024

- ✓ Standard Freight and Lift-Gate Included
- ✓ All Hardware and Anchors Included
- ✓ Doors, Dividers, Pilasters Included

SOLID PLASTIC  
25 year warranty

## 6 TOILET COMPARTMENTS AND 6 SHOWER COMPARTMENTS WITH NO DOORS

\$ 10,875.00



Mounting height above finished floor: 14"

### Material



SOLID PLASTIC

Solid Plastic

### Series

STANDARD



SERIES

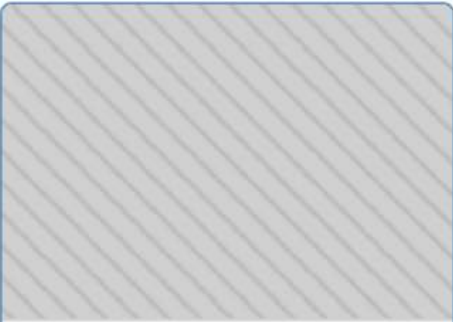
Standard

### Partition Type



Headrail Braced

### Finish



TBA  
Color TBA



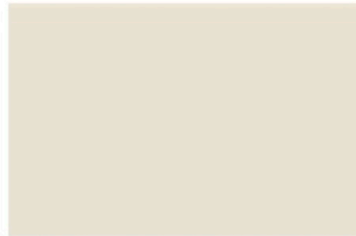
**TOILET**  
PARTITIONS.COM

## SOLID PLASTIC COLOR CARD

\*Delivered in 6-9 Business Days



213 BONE



223 LINEN



239 GRAY



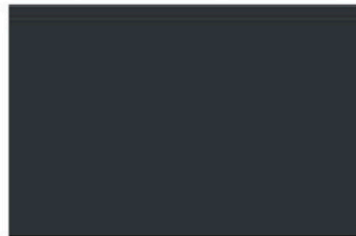
215 BURGUNDY



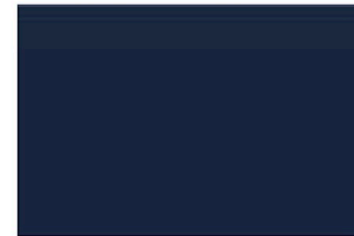
218 FOSSIL



238 ALMOND



231 SLATE



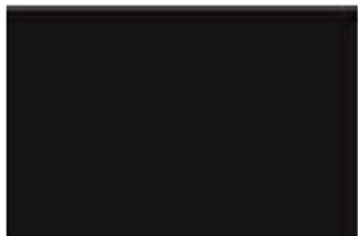
212 BLUEBERRY



222 HUNTER



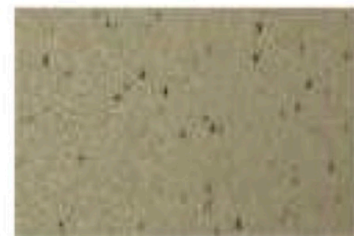
225 MOCHA



211 BLACK



227 PAISLEY




217 CANYON GRANITE



219 FROST GRANITE

## Drawing Notes

- Compartment widths on drawings are shown at center line of panels.
- Compartment depths on drawings are shown from front face of pilaster to finished wall.
- Cut headrail in field to suit (if applicable).
- "X" on drawings indicates that backing is required.
- Fabrication will not commence until approval has been received.
- Material supplied will conform to the dimensions indicated on drawings.
- Scale of drawings - none.
-  on drawings indicates location of pilaster reinforcing channel(s).

Project Title 17032898

Created By Rob Fry

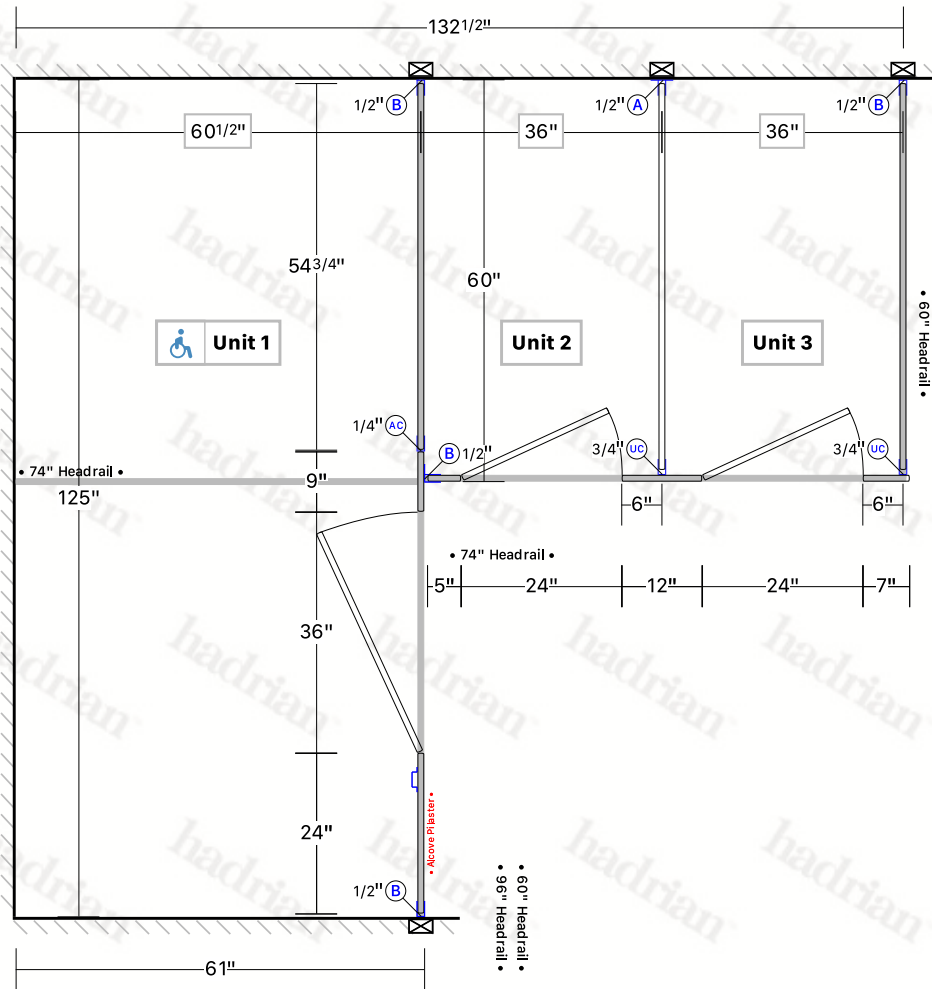
Last edit date 10/03/2024

Distributor Fry Specialty Inc.

Drawing Title MEN

Date Printed 10/03/2024

Project Number P0848609



LEGEND

(A) H Bracket

(AC) Alcove Channel

(B) F Bracket

(UC) U Channel

Unit

Panel/Door height = 55"  
Panel/Door AFF = 14"

Product Toilet Partitions

Series Standard

Sightline Option None

Material Solid Plastic

AFF 14"

Hinge Wrap

Finish TBA - Color TBA

Hardware Aluminum Channels & Brackets

Latch Aluminum

Partition Headrail Braced

Options None

Project Title 17032898

Drawing Title WOMEN

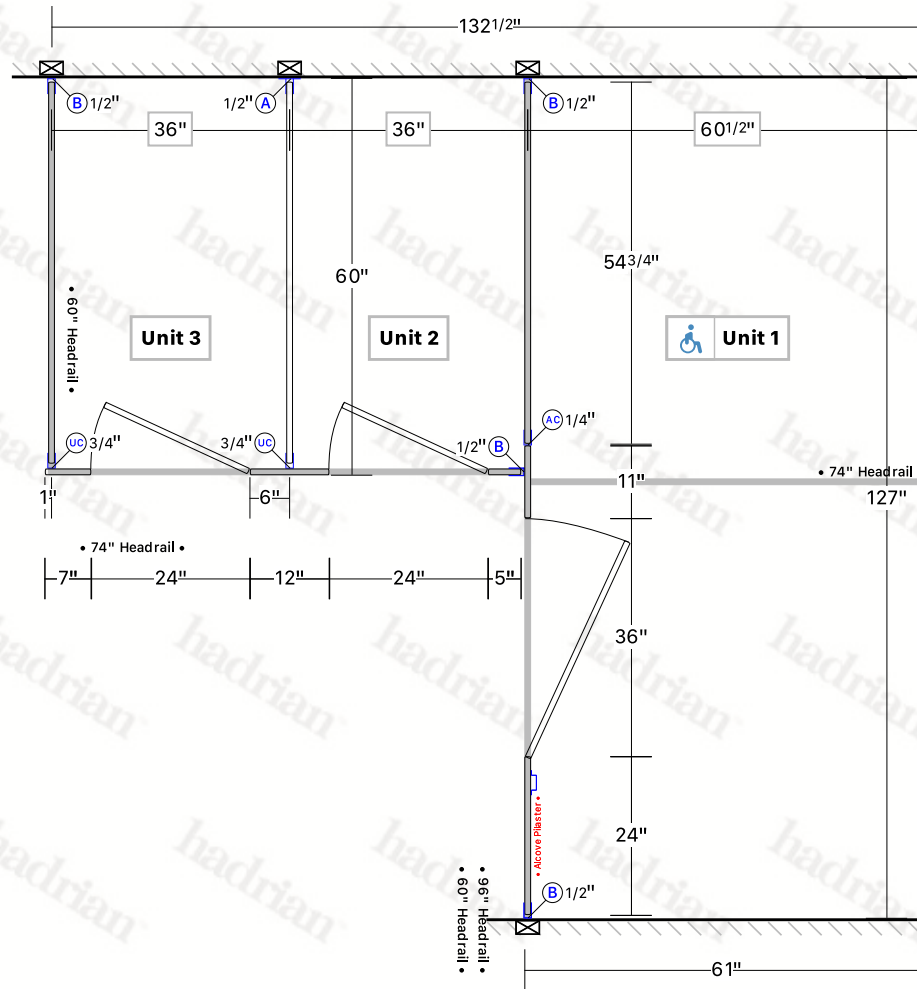
Created By Rob Fry

Date Printed 10/03/2024

Last edit date 10/03/2024

Project Number P0848609

Distributor Fry Specialty Inc.



LEGEND

(A) H Bracket

(AC) Alcove Channel

(B) F Bracket

(UC) U Channel

Unit

Panel/Door height = 55"  
Panel/Door AFF = 14"

Product Toilet Partitions

Series Standard

Sightline Option None

Material Solid Plastic

AFF 14"

Hinge Wrap

Finish TBA - Color TBA

Hardware Aluminum Channels & Brackets

Latch Aluminum

Partition Headrail Braced

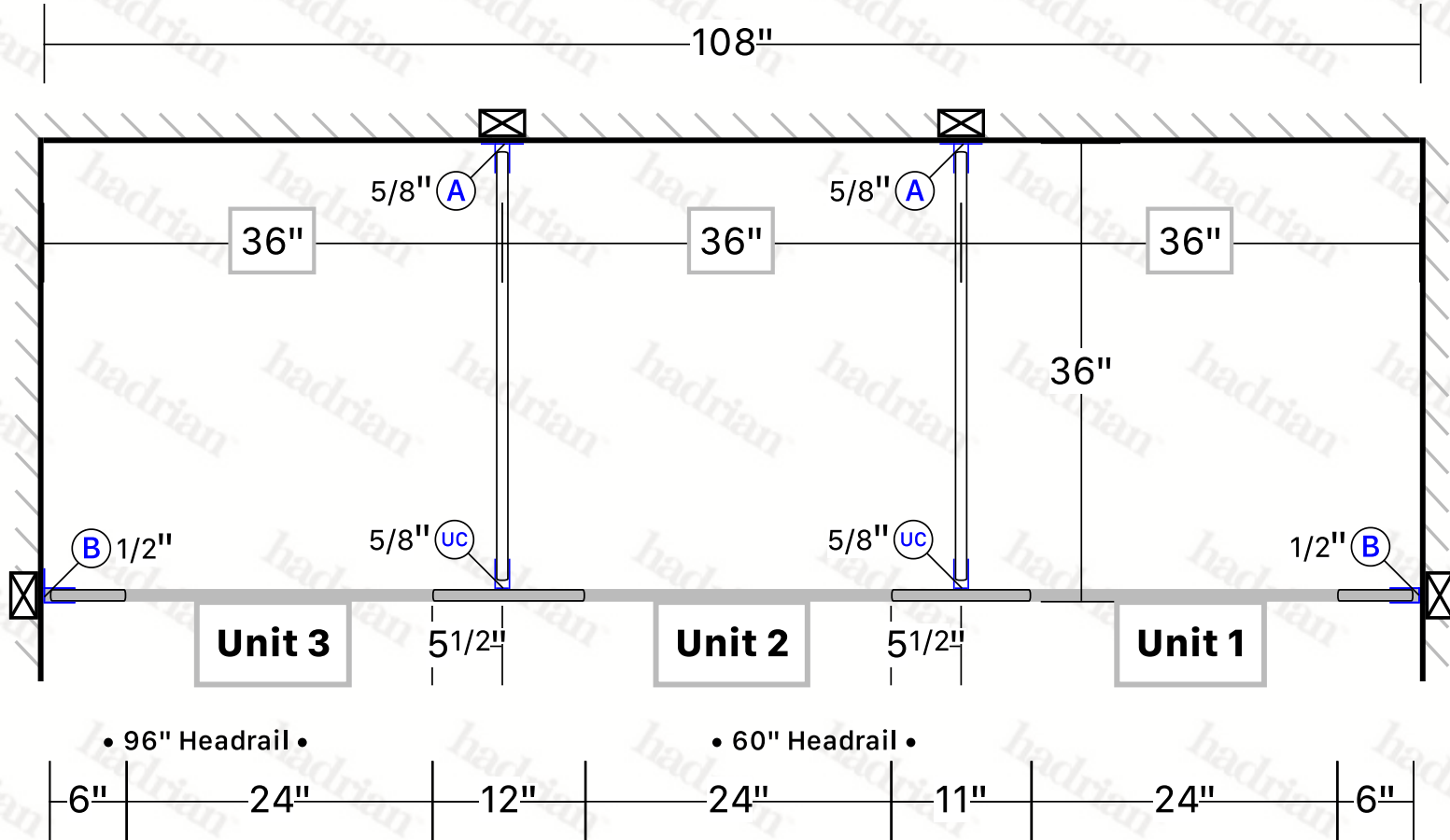
Options None

**Project Title** 17032898  
**Drawing Title** MEN SHOWERS

**Created By** Rob Fry  
**Date Printed** 10/03/2024

**Last edit date** 10/03/2024  
**Project Number** P0848609

**Distributor** Fry Specialty Inc.



**LEGEND**

(A) H Bracket

(B) F Bracket

(UC) U Channel

**Unit**

Panel/Door height = 55"  
 Panel/Door AFF = 14"

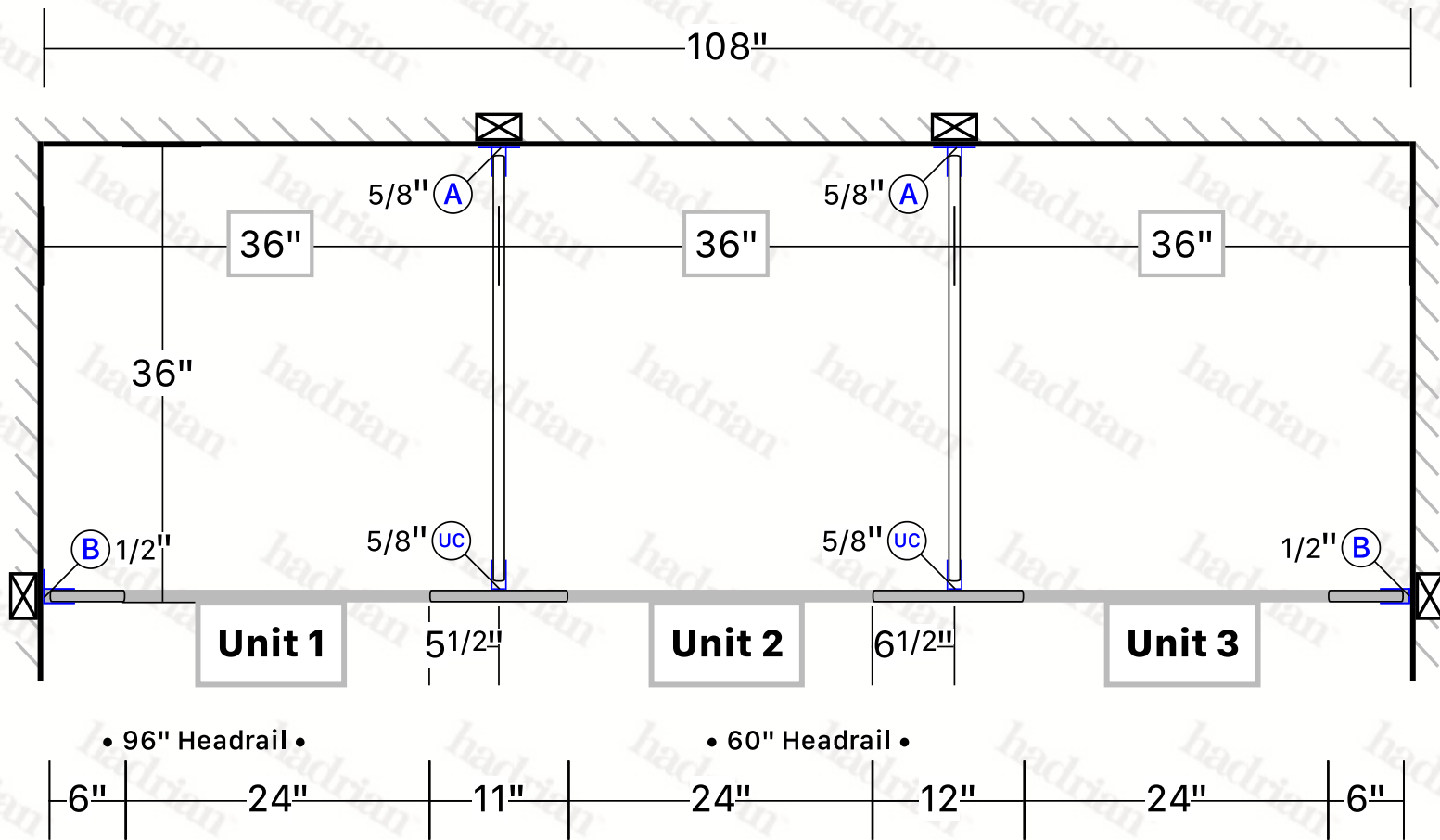
**Product** Toilet Partitions  
**Series** Standard  
**Sightline Option** None

**Material** Solid Plastic  
**AFF** 14"  
**Hinge** Wrap

**Finish** TBA - Color TBA  
**Hardware** Aluminum Channels & Brackets  
**Latch** Aluminum

**Partition** Headrail Braced  
**Options** None

Project Title	17032898	Created By	Rob Fry	Last edit date	10/03/2024	Distributor	Fry Specialty Inc.
Drawing Title	WOMEN SHOWERS	Date Printed	10/03/2024	Project Number	P0848609		



<div>LEGEND</div>		<div>(A) H Bracket</div>	<div>(B) F Bracket</div>	<div>(UC) U Channel</div>	<div>Unit</div> <div>Panel/Door height = 55" Panel/Door AFF = 14"</div>		
<div>Product</div>	Toilet Partitions	<div>Material</div>	Solid Plastic	<div>Finish</div>	TBA - Color TBA	<div>Partition</div>	Headrail Braced
<div>Series</div>	Standard	<div>AFF</div>	14"	<div>Hardware</div>	Aluminum Channels & Brackets	<div>Options</div>	None
<div>Sightline Option</div>	None	<div>Hinge</div>	Wrap	<div>Latch</div>	Aluminum		

## **Headrail Braced STANDARD Solid Plastic Toilet Partitions**

# **Material Specification**

### **1 . 0 1 Construction**

Doors, panels and pilasters shall be certified CLASS B polyethylene solid plastic. The material shall contain no foaming agents, which can cause the formation of air pockets. The self-lubricating surface is resistant to marking and can be maintained effectively with ordinary household cleaners. Material is ideal for toilet partition installations, especially in high abuse and high moisture environments.

### **1 . 0 2 Doors**

Shall be (25mm) 1" thick by (1397mm) 55" high straight cut with fine radius edges.

### **1 . 0 3 Panels**

Shall be (25mm) 1" thick by (1397mm) 55" high straight cut with fine radius edges.

### **1 . 0 4 Pilasters**

Shall be (25mm) 1" thick by (2083mm) 82" high straight cut with fine radius edges.

### **1 . 0 5 Headrail**

Shall be 32mm (1.25") by 44mm (1.75") extruded anodized aluminum with anti-grip design. Wall thickness to be 1.5mm (0.060") and shall be securely attached to wall and pilasters with manufacturer's fittings in such a way as to make a rigid installation. All joints in headrails shall be made at a pilaster.

### **1 . 0 6 Pilaster Fastening Method**

Pilasters shall be securely and rigidly fastened to the floor with 3" (76mm) high stainless steel anchor shoes. Plastic anchor shoes are also available in colors to complement the partitions. Three heavy-duty aluminum brackets shall be used at the pilaster to wall connection.

### **1 . 0 7 Hardware & Fittings**

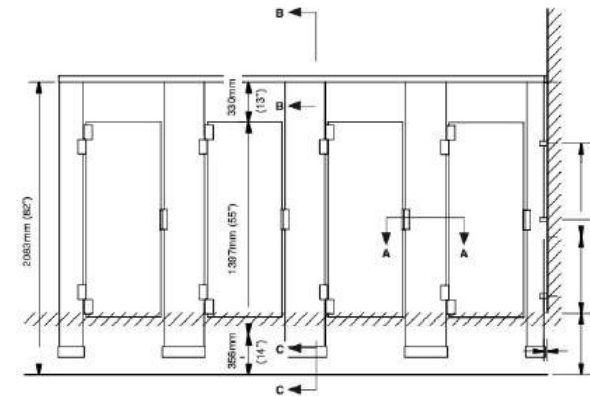
Doors are installed with 1/8" thick heavy extruded clear anodized aluminum hinges, which wrap around both the door and pilaster. Hinges are fastened to door and pilaster with tamper-proof 6-lobe security head stainless steel thru-bolts and fastened to the edge of the door and pilaster with a #10 x 1" screw. Top hinges have adjustable nylon cams. Strike-keeper and throw latch are extruded clear anodized aluminum. Three heavy-duty aluminum brackets are used at the panel to wall connection and a full-height continuous aluminum channel is used at the panel to pilaster connection. Inswing doors shall be fitted with a zinc die cast, #4 brushed combined coat hook and bumper. Outswing doors shall be fitted with a #4 brushed stainless steel flat coat hook. Fasteners are theft-proof 6-lobe security head stainless steel screws. Hadrian hardware meets ADA and Canadian barrier-free requirements.

### **1 . 0 8 Finish**

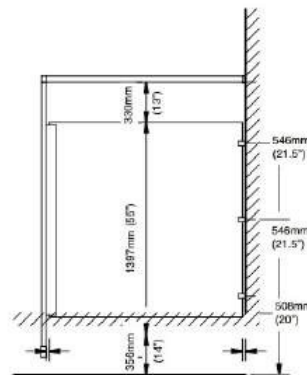
Doors, panels and pilasters shall be certified CLASS B polyethylene with uniform color throughout. Color shall be as selected from Hadrian's color card.



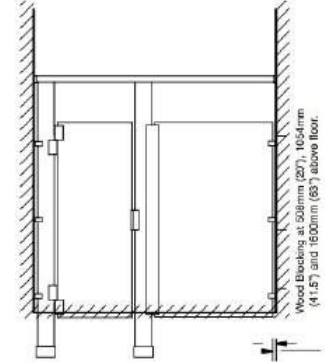
## Headrail Braced STANDARD Solid Plastic Toilet Partitions



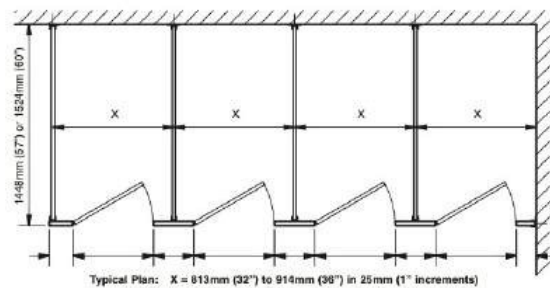
front elevation



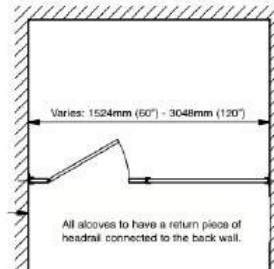
side elevation



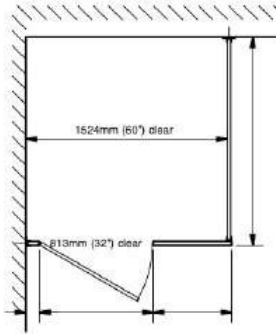
alcove elevation



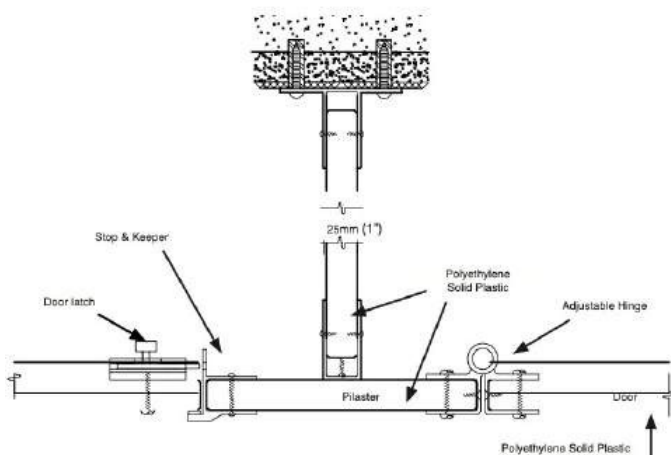
plan



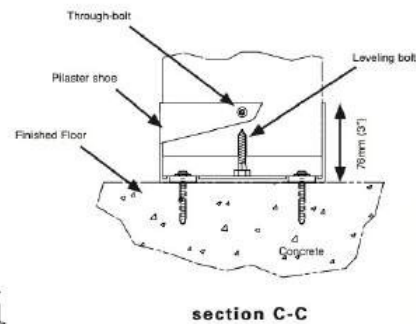
alcove plan



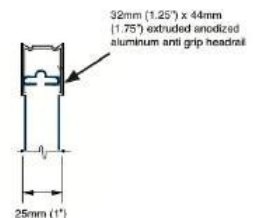
barrier-free plan



plan detail A-A



section C-C



section -B-B

**Important Note:**  
Refer to final drawings for wood blocking information. Wood blocking is critical to ensure a rigid installation.

**WALL MOUNTED AND FLOOR MOUNTED - SOLID PLASTIC URINAL SCREENS****1.01 Construction**

Screens shall be certified CLASS B polyethylene. The material shall contain no foaming agents, which can cause the formation of air pockets. The self-lubricating surface is resistant to marking and can be maintained effectively with ordinary household cleaners. Material is ideal for toilet partition installations, especially in high abuse and high moisture environments.

**1.02 Wall Mounted Screens**

Screens shall be 25mm (1") thick, straight cut with fine radius edges. Screens must be 457mm (18") or 610mm (24") deep by 1219mm (48") high and anchored into the wall approximately 305mm (12") off the floor with two brackets spaced 902mm (35.5") apart.

**1.03 Floor Mounted Screens**

Screens shall be 25mm (1") thick, straight cut with fine radius edges. Screens must be 610mm (24") to 1168mm (46") deep by 1397mm (55") high and anchored into the wall approximately 356mm (14") off the floor with two brackets spaced 1156mm (45.5") apart. Pilasters shall be securely and rigidly fastened to the floor with 3" (76mm) high stainless steel anchor shoes.

**1.04 Hardware & Fittings**

Wall mounted and floor mounted screens shall be fastened to the wall with heavy-duty aluminum brackets. Floor mounted screens shall be fastened to the supporting pilaster with a full height continuous aluminum "U" channel. Fasteners are theft-proof 6-lobe security head stainless steel screws.

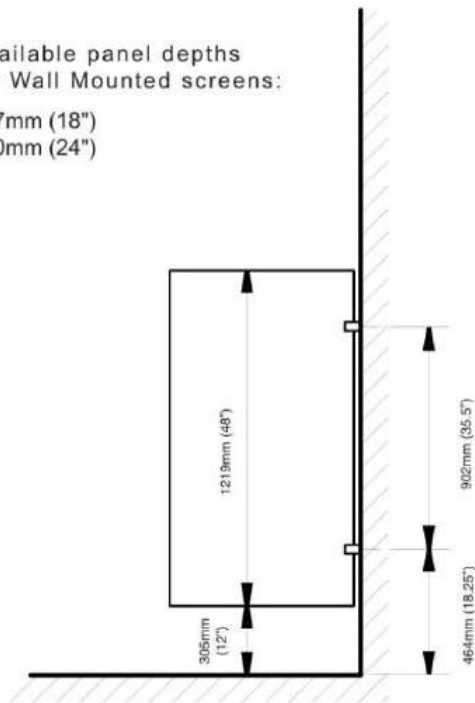
**1.05 Finish**

Screens shall be certified CLASS B polyethylene with uniform color throughout. Color shall be as selected from Hadrian's color card.

## WALL MOUNTED AND FLOOR MOUNTED - SOLID PLASTIC URINAL SCREENS

Available panel depths  
for Wall Mounted screens:

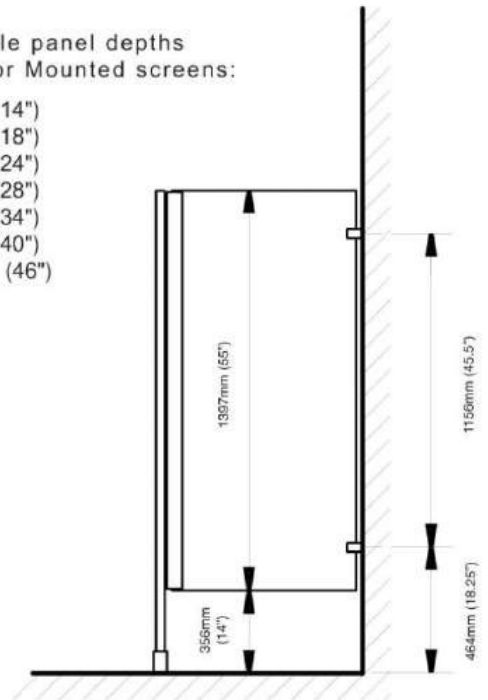
457mm (18")  
610mm (24")



**Wall Mounted Screen**

Available panel depths  
for Floor Mounted screens:

356mm (14")  
457mm (18")  
610mm (24")  
711mm (28")  
564mm (34")  
102mm (40")  
1168mm (46")



**Floor Mounted Screen**

### Important Notes:

Refer to final drawings for wood blocking information.  
Wood blocking is critical to ensure a rigid installation.