



Attention: Ryan
Quote #: 17033088
Job Name: Rancho Trailer Park
Delivery Zip Code: 92024

Date: Oct 21, 2024
Expires: Nov 20, 2024

Item	Qty.
Toilet Stalls	10
Urinal Divider	N/A

Color: TBD

Material Type: Solid Plastic

Mounting Style: Head-Rail Braced

Available Materials

- Powder Coated Steel
- Plastic Laminate
- Stainless Steel
- Solid Plastic
- Phenolic

Included at No Charge

- Shipping
- Lift-Gate Service
- Notification Before to Delivery

Current Lead Time: 10-15 Business Days
business days.

Notes:

TOTAL \$ 11,325.00



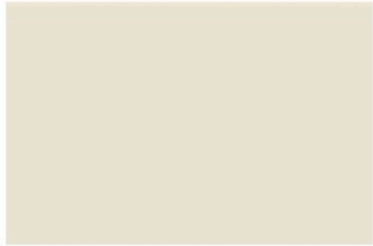
TOILET
PARTITIONS.COM

SOLID PLASTIC COLOR CARD

*Delivered in 6-9 Business Days



213 BONE



223 LINEN



239 GRAY



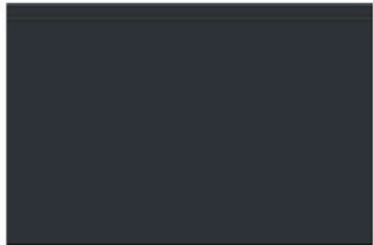
215 BURGUNDY



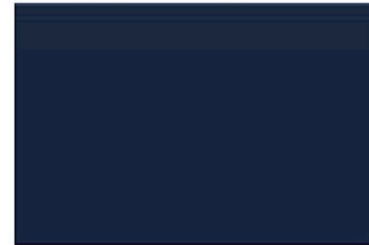
218 FOSSIL



238 ALMOND



231 SLATE



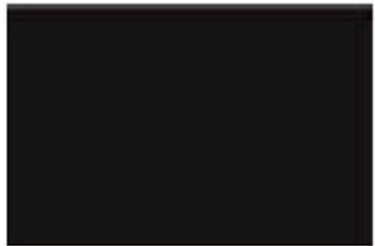
212 BLUEBERRY



222 HUNTER



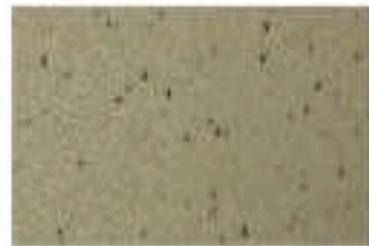
225 MOCHA



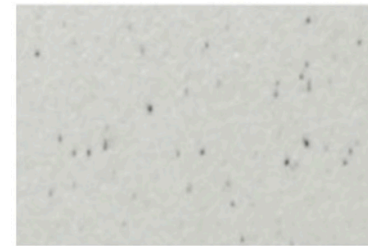
211 BLACK



227 PAISLEY




217 CANYON GRANITE



219 FROST GRANITE

Drawing Notes

- Compartment widths on drawings are shown at center line of panels.
- Compartment depths on drawings are shown from front face of pilaster to finished wall.
- Cut headrail in field to suit (if applicable).
- "X" on drawings indicates that backing is required.
- Fabrication will not commence until approval has been received.
- Material supplied will conform to the dimensions indicated on drawings.
- Scale of drawings - none.
-  on drawings indicates location of pilaster reinforcing channel(s).

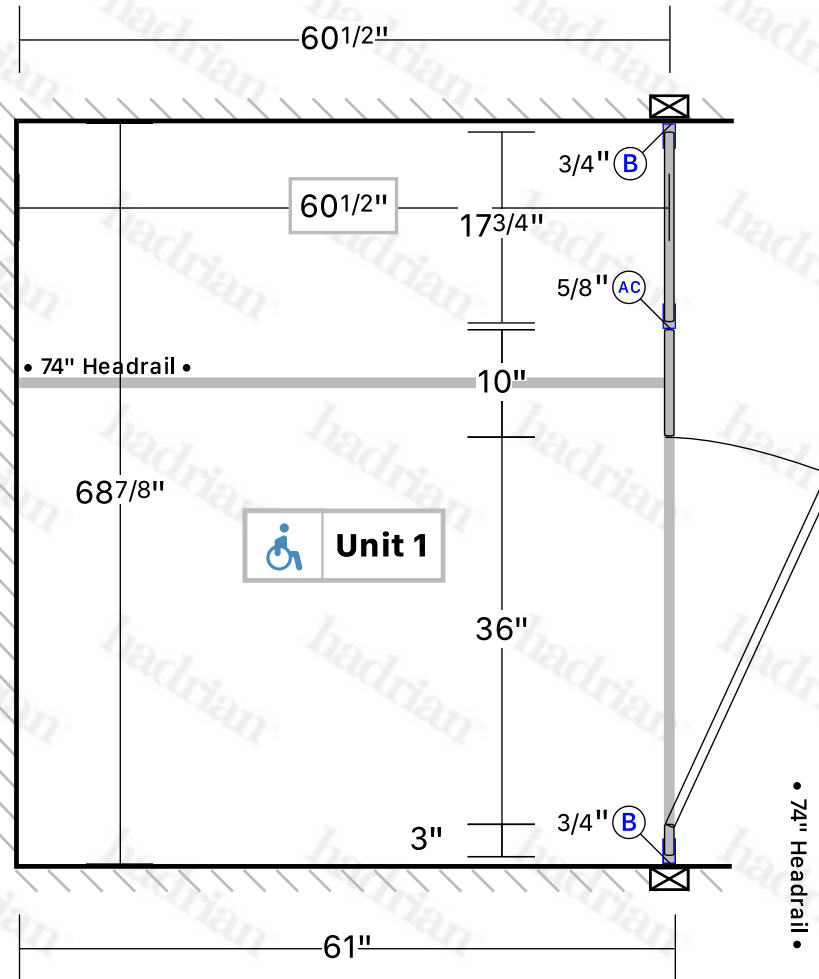
hadrian-inc.com

Project Title 17033088
Drawing Title MENS SHOWER #1

Created By Rob Fry
Date Printed 10/21/2024

Last edit date 10/21/2024
Project Number P0859258

Distributor Fry Specialty Inc.



LEGEND

(AC) Alcove Channel

(B) F Bracket

Unit

Panel/Door height = 55"
 Panel/Door AFF = 14"

Product Toilet Partitions
Series Standard
Sightline Option None

Material Solid Plastic
AFF 14"
Hinge Wrap

Finish TBA - Color TBA
Hardware Aluminum Channels & Brackets
Latch Aluminum

Partition Headrail Braced
Options None

Project Title 17033088

Created By Rob Fry

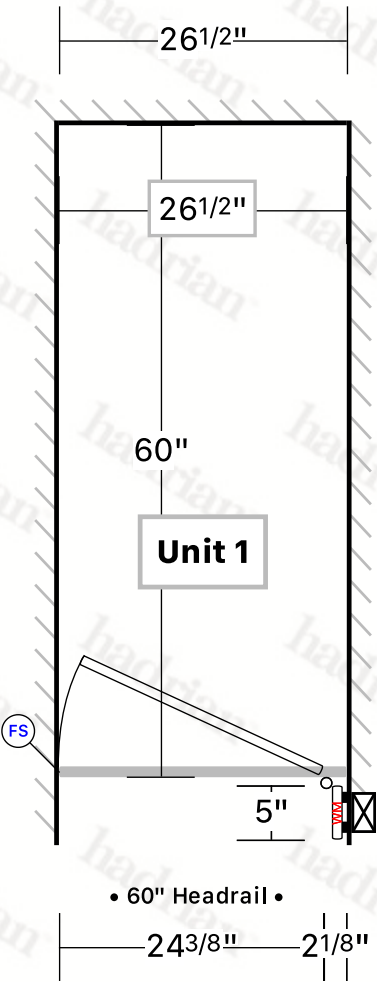
Last edit date 10/21/2024

Distributor Fry Specialty Inc.

Drawing Title MENS SHOWER #2

Date Printed 10/21/2024

Project Number P0859258



LEGEND

(B) F Bracket

(FS) Flat Stop

(WM) Wall Mount Pilaster

Unit

Panel/Door height = 55"
Panel/Door AFF = 14"

Product Toilet Partitions

Series Standard

Sightline Option None

Material Solid Plastic

AFF 14"

Hinge Wrap

Finish TBA - Color TBA

Hardware Aluminum Channels & Brackets

Latch Aluminum

Partition Headrail Braced

Options None

Project Title 17033088

Created By Rob Fry

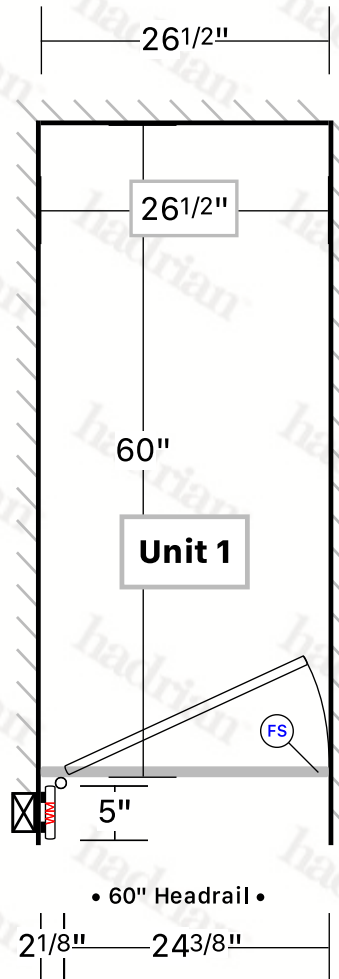
Last edit date 10/21/2024

Distributor Fry Specialty Inc.

Drawing Title WOMENS SHOWER #1

Date Printed 10/21/2024

Project Number P0859258



LEGEND

(B) F Bracket

(FS) Flat Stop

(WM) Wall Mount Pilaster

Unit

Panel/Door height = 55"
Panel/Door AFF = 14"

Product Toilet Partitions

Series Standard

Sightline Option None

Material Solid Plastic

AFF 14"

Hinge Wrap

Finish TBA - Color TBA

Hardware Aluminum Channels & Brackets

Latch Aluminum

Partition Headrail Braced

Options None

Project Title 17033088

Created By Rob Fry

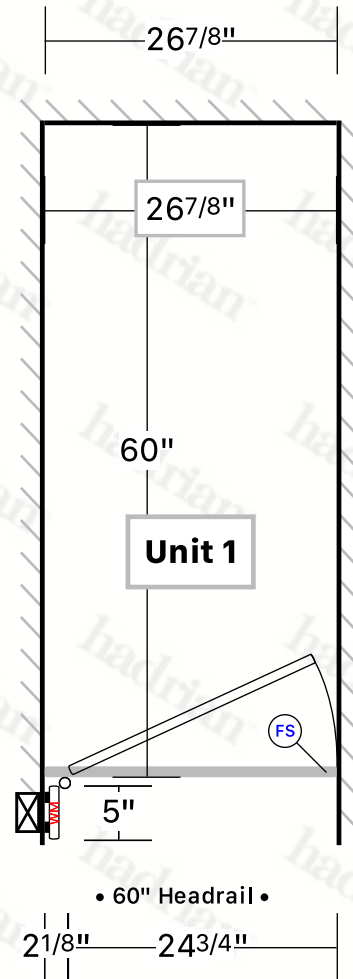
Last edit date 10/21/2024

Distributor Fry Specialty Inc.

Drawing Title WOMMENS SHOWER #2

Date Printed 10/21/2024

Project Number P0859258



LEGEND

(B) F Bracket

(FS) Flat Stop

(WM) Wall Mount Pilaster

Unit

Panel/Door height = 55"
Panel/Door AFF = 14"

Product Toilet Partitions

Series Standard

Sightline Option None

Material Solid Plastic

AFF 14"

Hinge Wrap

Finish TBA - Color TBA

Hardware Aluminum Channels & Brackets

Latch Aluminum

Partition Headrail Braced

Options None

Project Title 17033088

Created By Rob Fry

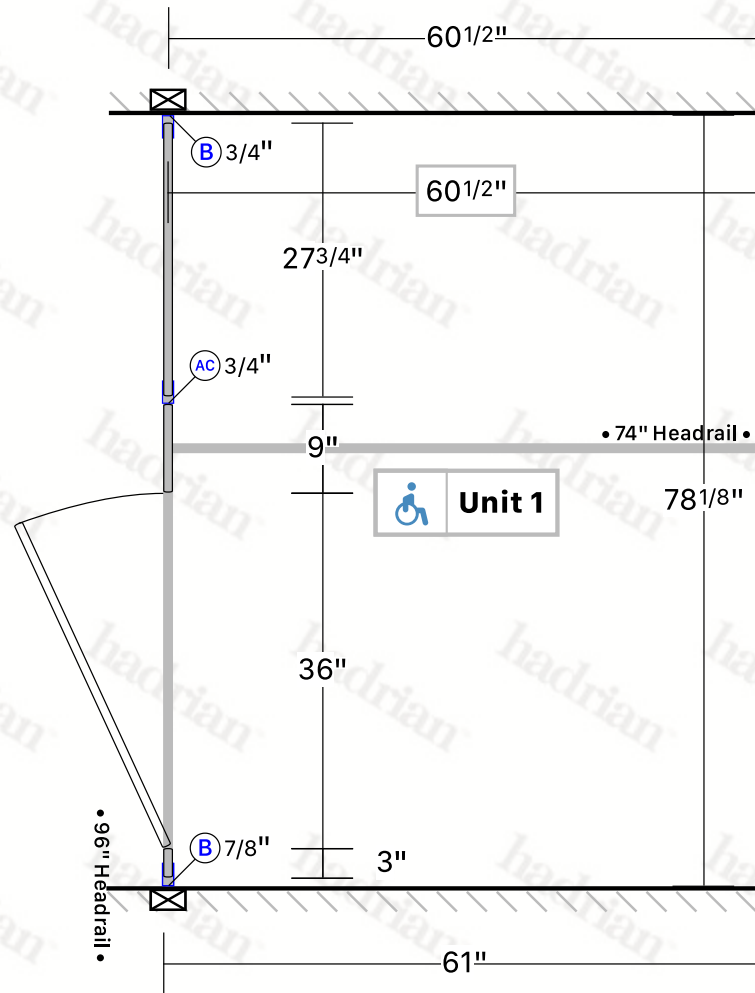
Last edit date 10/21/2024

Distributor Fry Specialty Inc.

Drawing Title WOMMENS SHOWER #3

Date Printed 10/21/2024

Project Number P0859258



LEGEND

(AC) Alcove Channel

(B) F Bracket

Unit

Panel/Door height = 55"
Panel/Door AFF = 14"

Product Toilet Partitions

Series Standard

Sightline Option None

Material Solid Plastic

AFF 14"

Hinge Wrap

Finish TBA - Color TBA

Hardware Aluminum Channels & Brackets

Latch Aluminum

Partition Headrail Braced

Options None

hadrian-inc.com

Project Title 17033088

Created By Rob Fry

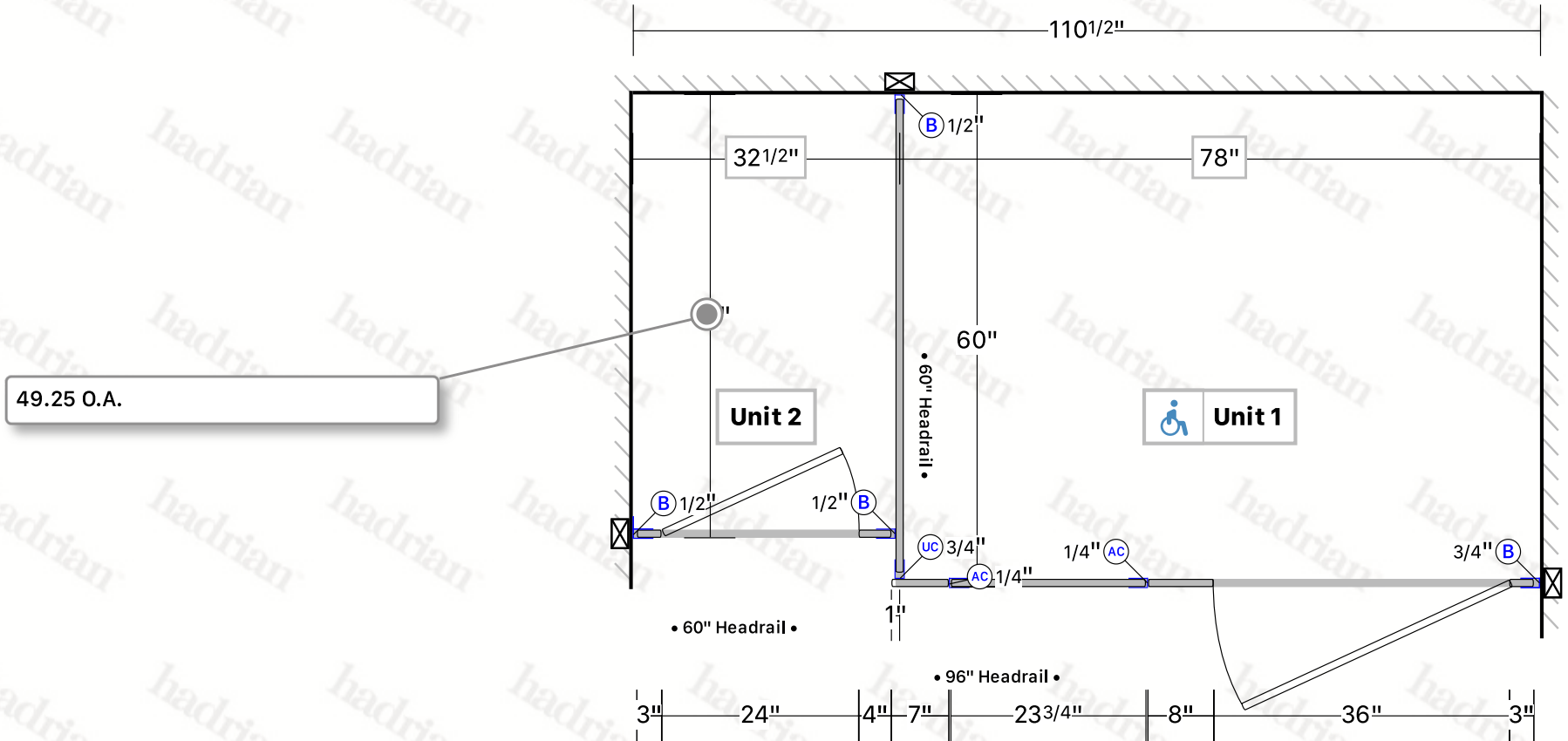
Last edit date 10/21/2024

Distributor Fry Specialty Inc.

Drawing Title MENS TOILETS - 1

Date Printed 10/21/2024

Project Number P0859258



LEGEND

(AC) Alcove Channel

(B) F Bracket

(UC) U Channel

Unit

Panel/Door height = 55"
Panel/Door AFF = 14"

Product Toilet Partitions

Series Standard

Sightline Option None

Material Solid Plastic

AFF 14"

Hinge Wrap

Finish TBA - Color TBA

Hardware Aluminum Channels & Brackets

Latch Aluminum

Partition Headrail Braced

Options None

Material Specification

HEADRAIL BRACED - SOLID PLASTIC TOILET PARTITIONS - STANDARD

1.01 Construction Features

Doors, panels and pilasters shall be certified Class B polyethylene solid plastic. The material shall contain no foaming agents, which can cause the formation of air pockets. The self-lubricating surface is resistant to marking and can be maintained effectively with ordinary household cleaners. Material is ideal for toilet partition installations, especially in high abuse and high moisture environments.

1.02 Doors

Shall be (25mm) 1" thick by (1397mm) 55" high and straight cut with fine radius edges.

1.03 Panels

Shall be (25mm) 1" thick by (1397mm) 55" high and straight cut with fine radius edges.

1.04 Pilasters

Shall be (25mm) 1" thick by (2083mm) 82" high and straight cut with fine radius edges.

1.05 Headrail

Shall be 32mm (1.25") by 44mm (1.75") extruded anodized aluminum with anti-grip design. Wall thickness to be 1.5mm (0.060") and shall be securely attached to wall and pilasters with manufacturer's fittings in such a way as to make a rigid installation. All joints in headrails shall be made at a pilaster.

1.06 Pilaster Fastening Method

Pilasters shall be securely and rigidly fastened to the floor with 3" (76mm) high stainless steel anchor shoes. Three heavy-duty aluminum brackets shall be used at the pilaster to wall connection.

1.07 Hardware and Fittings

Doors are installed with 1/8" thick heavy extruded clear anodized aluminum hinges, which wrap around both the door and pilaster. Hinges are fastened to door and pilaster with tamper-proof 6-lobe security head stainless steel thru-bolts and fastened to the edge of the door and pilaster with a #10 x 1" screw. Top hinges have adjustable nylon cams.

Strike-keeper and throw latch are extruded clear anodized aluminum.

The combined stop and keeper shall have a 19mm (0.75") diameter bumper locked in place. Finish to match other hardware items.

Doors shall be fitted with a zinc die cast, #4 brushed combined coat hook and bumper. Fasteners are theft-proof 6-lobe security head stainless steel screws. Hadrian door hardware meets ADA and Canadian barrier-free requirements.

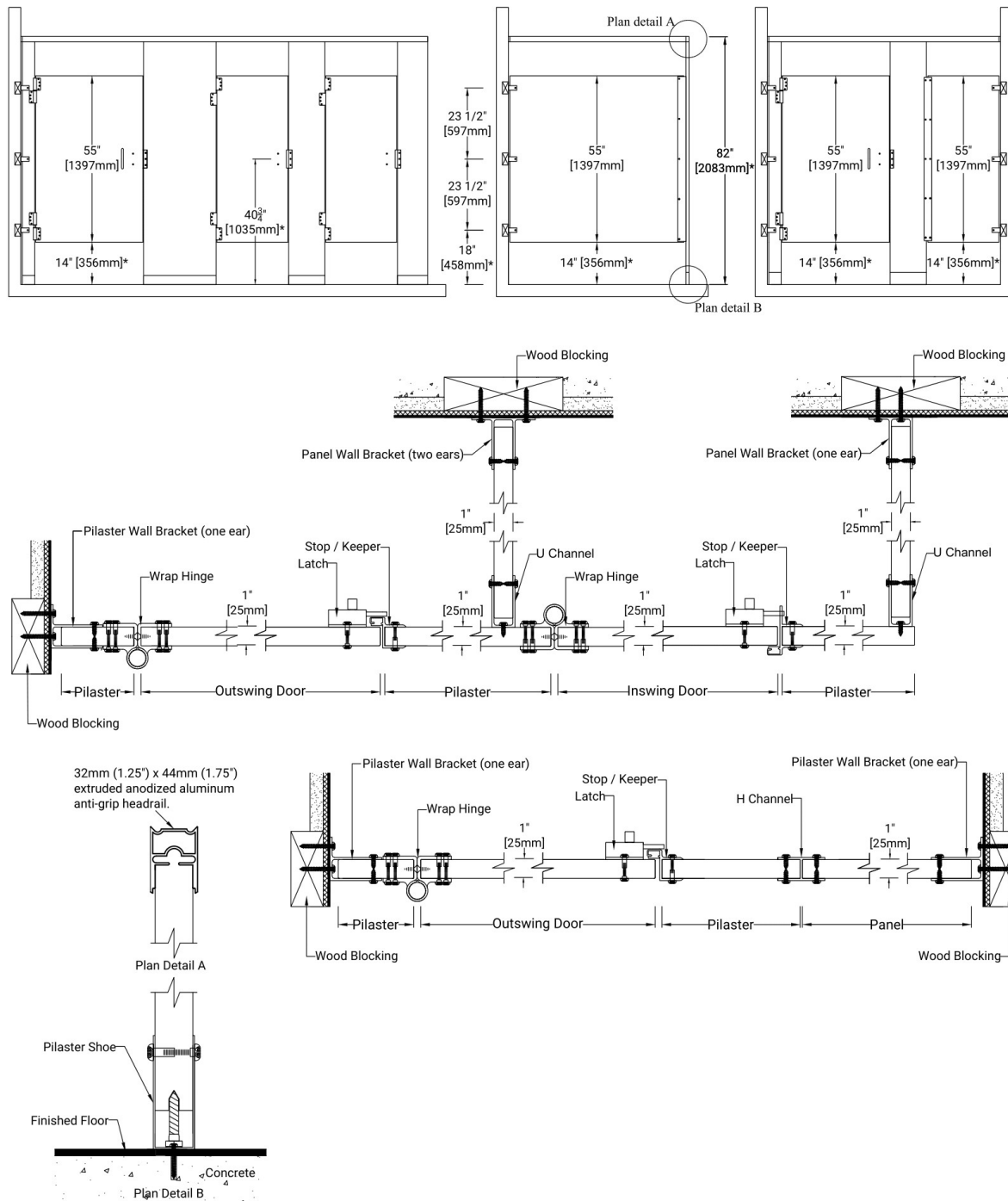
Three heavy-duty aluminum brackets are used at the panel to wall connection and a full-height continuous aluminum channel is used at the panel to pilaster connection.

1.08 Finish

Doors, panels and pilasters shall be certified Class B polyethylene with uniform color throughout. Color shall be as selected from Hadrian's color card.

This specification applies to room(s): WATER HEATER DOOR, MENS SHOWER #1, MENS SHOWER #2, WOMENS SHOWER #1, WOMMENS SHOWER #2 , WOMMENS SHOWER #3, MENS TOILETS, MENS TOILETS - 1

Plastic Toilet Partitions
Standard Series - Headrail Braced - 14" [356mm] AFF
Aluminum Channels & Brackets - Aluminum Surface Latch & Wrap Hinge



Important Notes:

Refer to final drawings for wood blocking information. Wood blocking is critical to ensure a rigid installation. See material specifications for material and hardware finishes.

*Above finish floor dimensions may vary due to floor level and cam position

Warranty Information

Hadrian Manufacturing Inc. ("Hadrian") provides the following warranty with respect to the Hadrian product(s) supplied for the project indicated above.

Subject to the terms set out herein, the product(s) are warranted against defects in material and workmanship from the date of receipt by the authorized Hadrian distributor for the warranty period outlined below:

Powder Coated Toilet Partitions	3 years
Stainless Steel Toilet Partitions	5 years
Solid Plastic Toilet Partitions	25 years
Phenolic Black Core Toilet Partitions	25 years
Emperor (corridor) Lockers	2 years
Gladiator (athletic) Lockers	5 years
Replacement Front Lockers	2 years
Boot Racks	1 year

The warranty is for Hadrian material only and excludes damages caused by installation errors, vandalism, improper usage, improper maintenance, exposure to harsh environments or chemicals (such as chlorine, bromine, etc.) or failure of the building structure to adequately support the product. Site preparations (i.e. wood blocking, etc.) must meet final drawing specifications and Hadrian's recommended maintenance procedure must be followed.

The exclusive remedy under this warranty shall, at Hadrian's discretion, be replacement or repair of the defective material. Hadrian will not pay any removal, installation or other labor costs associated with the repair or replacement. Replacement material will be warranted for the unused portion of the original warranty period.

No warranty of merchantability or fitness for a particular purpose is made or implied. In no event shall Hadrian be liable for any other costs or damages, including loss of profit, loss of revenue, indirect, incidental, special or consequential damages howsoever arising, whether under warranty, contract, statute, tort, equity or otherwise.

This warranty extends only to the original authorized Hadrian customer and is non-transferable. Warranty claims must be made during the applicable warranty period and initiated by contacting Hadrian at the following coordinates: USA: 440-942-9118 / CANADA: 905-333-0300.

The foregoing constitutes the entire warranty given by Hadrian and no one is authorized to change or expand this warranty on behalf of Hadrian.



Hadrian Manufacturing Inc., 965 Syscon Road, Burlington, ON, L7L 5S3 T: 905-333-0300 F: 905-333-1841

Hadrian Manufacturing Inc., 2550 - 61 Avenue SE, Calgary, AB, T2C 4V2 T: 905-333-0300 F: 905-333-1841

Hadrian Inc., 7420 Clover Avenue, Mentor, OH, 44060 T: 440-942-9118 F: 440-942-9618

Hadrian Inc., 3602 West Washington Street, Suite 200, Phoenix, AZ, 85009 T: 440-942-9118 F: 440-942-9618

08/2023